

LYMED®

LYMED CATALOGUE

1/2025



**SKIN
COMPRESSION
SENSE
INTERIM & LIGHT
POST-OPERATION
WELL-BEING
SPORT**





All up-to-date information:
[Lymed.fi/en](https://lymed.fi/en)

FOR PROFESSIONALS:

Catalog
Order forms
Measuring instructions
Lymed Learning Center

FOR USERS:

Instructional videos for donning
Wear & care instructions
Customer stories
Frequently asked questions

And much more!

WHAT MAKES LYMED PRODUCTS DIFFERENT?

FLAT SEAM STRUCTURE

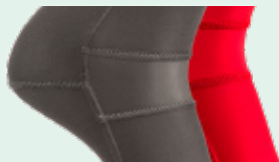
A comfortable feel, with less irritation or disturbance.



[Read more on page 21](#)

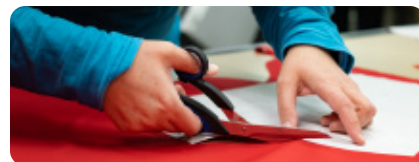
COMFORT THROUGH DESIGN

The products feature anatomical designs and lightening. Perfect fit is achieved with seams!



LONG LIFESPAN

Repairs and alterations are possible, even after the production of the product.



[Read more on page 13](#)

TRULY CUSTOM-MADE

Always made to individual measurements, precisely designed medical compression garment - for every situation.



[Read more on page 12](#)

MOST PERSONALIZATION OPTIONS

Challenging product solutions and individual requests can be realized in custom-made products.



[Read more on page 28](#)

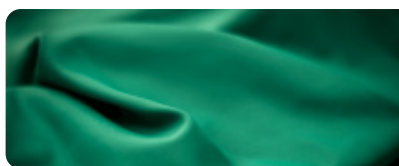
THREE HIGH-QUALITY FABRICS

Three different level knits for various purposes. Durable polyamide-elastane blends developed with fabric manufacturers with excellent pressure resistance. Only available in Lymed products!

[Read more on page 20](#)

EASY TO CARE FOR

The products are machine washable, dryer safe, and quick-drying, unlike many other compression garments.



NON-ALLERGENIC

Lymed materials do not contain natural rubber or other allergens. No cotton or other natural fibers. Made ethically and responsibly in Europe.



[Read more on page 21](#)

THIN MATERIALS

Flat knitted warp-knit: products up to 60% thinner than competitors' materials*.

Better wearing comfort with the same pressure levels! Thin products allow movement and do not hinder everyday life.

**In comparison of the average thickness of the most popular materials from the 7 largest compression sock and sleeve manufacturers compared to the average thickness of Lymed materials.*

[Read more on page 21](#)

LYMED CATALOGUE

PRODUCT INFORMATION

Company	5
Indications of use	7
Implementation of Medical Device Regulation	12
Warranty, repairs & product support	13
Ordering Lymed products	14
Choosing the right product	16
Pressure and compression	18
Lymed materials	20
Recommended materials and pressure levels	22
Colors	24
Silicone and elastane bands	25
Ordering and product codes	26
Additions and special solutions	28
Additios for custom-made products	30
Customisation options for standard products	35
Sense functional supports	38
Stocking options	40

SKIN™ | Pressure garments for scar management

Vests and abdominal support	41
Sternal straps	44
Bodys	46
Pants	47
Legs and stockings	48
Sleeves and gloves	50
Web spacer and digital cap	53
Head and neck products	54

COMPRESSION™ | Medical compression garments

Vests and bodys	58
Bra and bra top	60
Compression bra	62
Pants	63
Suspensor	66
Maternity pants	67
Legs and stockings	68
Sleeves and gloves	70
Head products	73

SENSE™ | Neurological pressure garments

Scapula support vest and body	75
Vests	76
Overalls	77
Bodys	78
Pants	80
Legs and stockings	81
Sleeves and gloves	82

INTERIM & LIGHT™ | Interim care and light pressure garments

Vests	87
Pants	88
Gloves and sleeves	89
Stockings	91
Head products	92

POST-OPERATION™ | Post-operational support garments

Pants for women	94
Vest and sleeves	96
Bras and breast wrap	98
Abdominal bands	103
Head products	105

WELL-BEING™ | Pressure garments for wellness and health

Control Posture shirt	108
-----------------------	-----

SPORT™ | Pressure garments for sports

Active overall	110
Active vest	111
Active pants	112
Active leg and sock	113
Active sleeve	114
Recovery pants	115



QUALITY
INNOVATION
THE YEAR
2013



reddot award 2014
winner



GERMAN
DESIGN AWARD
SPECIAL
2016



FINNISH
TEXTILE &
FASHION
HONORABLE
MENTION 2018

From the very beginning, Lymed has been recognized as a leader and innovator in the field of high-quality medical pressure garments for lymphoedema, scar management, pain, neurological therapy, sports, and well-being. We continuously develop and study pressure garments and pressure treatment in close cooperation with hospitals and research centers, producing our award-winning products for both the public and private sectors.

As a medical aid manufacturer, Lymed has a strong focus on advancing the understanding and applications of pressure treatment. We consistently study and innovate in pressure treatment, transcending various industries. By combining new technologies with traditional expertise, Lymed's multi-talented team includes sewing personnel, tailors, designers, engineers, customer service staff, and logistics professionals.

WHAT ARE PRESSURE GARMENTS?

Medical pressure garments are designed to treat various medical conditions and physiological issues. Users of pressure garments may suffer from conditions such as burns, chronic pain, edema, cancer, or physical challenges caused by cerebral palsy, autism, or hypotonia.

A pressure garment is a tightly fitting piece of clothing that applies pressure to a specific body part or the entire body. The therapeutic effects of these garments are based on precisely calculated and controlled pressure.

MANUFACTURING OF LYMED GARMENTS

The aim of every Lymed garment is to provide the best possible results in pressure treatment while ensuring comfort and a polished, stylish appearance. The Lymed design process guarantees that the garments offer medically correct, controlled pressure levels, which can even vary within a single product to meet the specific requirements of the treatment.

The Lymed design process takes into account individual needs such as donning and doffing, work, hobbies, and physical limitations. Unique custom-made products and special solutions are possible because every member of our team contributes to the design and planning of each garment. Lymed maintains daily contact with its end users, allowing us to stay on top of clients' needs and ensure their active role in product development.

Both custom-made and standard-sized garments are designed in Tampere, Finland. Lymed custom-made garments are crafted from start to finish in Finland, ensuring the highest quality and precision. The cutting and sewing of standard-sized Lymed garments are carried out in both Tampere and Estonia, with each garment clearly labeled with its corresponding manufacturing country.

Lymed is proud to be one of the few companies in the textile industry still producing bespoke, handmade products. Every member of Team Lymed contributes their expertise, ensuring each garment is crafted with care and precision to meet the highest standards of quality.



WHAT IS TREATED WITH PRESSURE?

Burns

Skin grafts

Scars

Compression garments speed up scar maturation and prevent scar growth.

Swelling problems and diseases

Circulatory problems and diseases

Leg ulcers

Compression clothing supports blood and fluid circulation or compensates for their deficiencies.

Travel

Pregnancy

Risk groups

Prevention

Compression clothing can prevent the development of problems in everyday life.

Neurological syndromes

Muscular weakness syndromes

Movement disorders

Pain syndromes

Compression garments help to build a more functional somatosensory and proprioceptive system.

Musculoskeletal disorders

Posture problems

Supporting work well-being

Compression garments reduce tension and pain, as well as correcting improper posture.

Postoperative care for all surgeries

Compression garments prevent post-surgery or postpartum swelling, facilitating faster recovery.



GUARANTEED SAFETY

ISO 13485:2016 compliant operation

Medical device manufactured in accordance with EU MD regulation

Products comply with the pre-standard ENV 12718 for compression classes

Materials comply with Oeko-Tex 100 standard.





SCAR MANAGEMENT

Pressure garments are used to prevent and manage hypertrophic scars, keloids and erythema. Pressure garment is beneficial only if the scar is not fully matured. An unmaturation scar is relatively new, itchy and red. The pressure garment evens out the scar and accelerates the maturation process. Pressure garment therapy is widely accepted, primary treatment method for treating scars. The pressure treatment has been shown to thin the dermis, flatten the scar and realign the collagen according to epidermis. The pressure generated by medically controlled garments minimizes tissue edema and the division on cells. Additional scar treatment products (gel sheets, silicones) can be used with garments.

Pressure treatment can also be used as a prophylactic measure for wounds that do not heal as fast thus having an increased risk of hypertrophic scars. Garments should be used as soon as the healing skin can tolerate the optimal scar treatment pressure. In the beginning of the scar treatment, interim garments can be used at a lower pressure level before transitioning to optimal pressure levels. Garments should be used for 23 hours per day for approximately 12 months, or as long as it's needed, until scar maturation is achieved. Garments should be custom-made to ensure optimal pressure without causing tissue damage. The fit should be monitored regularly to prevent tissue damage. The garment for scar treatment should achieve a theoretical pressure near capillary pressure (20 to 30mmHg).

EXAMPLES OF USE:

- Burns, scars, keloids
- Skin grafts
- Hypertrophic scars
- Hemangiomas
- Ichthyosis, Epidermolysis bullosa
- Acne scarring

OBJECTIVES:

- Prevention and management of hypertrophic scars
- Maturation of the scar
- Evening out the scar for a flexible and a lighter skin
- Reducing itchiness and pain



EDEMA TREATMENT WITH COMPRESSION

In edema treatment the pressure is generated so that it gives a gradual compression. The strongest support is in the extremities, gradually decreasing towards the midsection. These garments are called medical compression garments. Compression treatment is the removal or prevention of edema with the use of these garments. Compression treatment can be implemented in every compression class from 1 to 4. Compression garments support the natural lymphatic circulation of the body. They are mostly used during the day. Compression therapy requires a strong commitment to care. There are no contraindications in using compression garments during the night or when at rest. However, the garment can be removed or a garment with less compression can be acquired for night-time, if the compression feels uncomfortable.

Compression treatment is needed when the person has venous insufficiency, lymphatic edema, venous ulcers, swelling caused by injuries or operations. Swelling is caused by the intercellular accumulated fluid. The reason for this might be insufficiencies in the lymphatic system or surface veins or even tissue damage.

Venous insufficiency causing swelling of the feet is generated by the slowed down blood flow back from the lower extremities, whilst venous pressure climbs higher causing fluids to seep through from capillary veins to the tissues. Swelling arises when the capacity of the lymphatic system cannot remove the accumulated fluid. Most common reason for swelling is venous insufficiency, which can manifest itself by causing lymphoedema or varicose veins.

Venous insufficiency can also cause changes in the skin, inflammation and leg ulcers. Preventive measures are recommended to those with stagnant lifestyles (lots of sitting or standing), when travelling, during pregnancies and in the aftercare of operations. The onset of symptoms of congenital illnesses can be significantly delayed by preventive compression therapy.

EXAMPLES OF USE:

- Lymphoedema, lipoedema
- Ulcers, deep venous thrombosis
- Traumas
- Restless feet
- Klippel-Trénaunay syndrome
- Pain caused by lymphatic problems

OBJECTIVES:

- Removal of excess fluids from the system
- Prevention
- Decreasing inflammation
- Pain management



POST-OPERATIVE AFTERCARE

Compression and pressure treatment is used in the aftercare of several surgeries to remove and prevent swelling, bruising and alleviate the pain in the operated area. The compression and pressure treatment supports rehabilitation by helping to regain mobility after operations.

Multiple sources indicate that pressure treatment supports healing by removing excess fluids from the area and preventing edema after the surgery. Compression/pressure garments are also used to ensure the attachment of the operated tissue.

EXAMPLES OF USE:

- Liposuctions
- Breast operations
- Lower body and abdominal operations
- Childbirth and c-sections
- Facial operations
- Upper arm operations

OBJECTIVES:

- Aftercare of operations
- Preventing swelling and scar growth at the same time
- Re-attachment of tissues

LYMED PRODUCT INFORMATION

Indications of use



NEUROLOGICAL PRESSURE GARMENTS

Changes achieved with pressure garments in movement and body control are neurophysiological and biomechanical in nature. Exact mechanisms are yet unknown. Central nervous system is a complex organization of nerve cells in which all activity is generated from external stimuli (Kottke, 1980). Nervous system gets feedback from our motor cortex and turns the sensory and proprioceptive feedback into movement. Proprioception, deep pressure, vibration and light touch are all somatosensory inputs that enhance learning within the central nervous system: this is how we interpret the world itself. Pressure from skin contact and increased internal soft tissue pressure leads to enhanced proprioceptive feedback to improve positional limb and body awareness, improving muscle activation and movement control.

It is also suggested that pressure garments have a dampening effect on external force vectors acting across joints, containing overshooting of the limbs beyond the intended target point and increasing predictability of movement that may possibly enhance mechanical stability. Prolonged stretch and cutaneous stimulation from the tight skin contact results in reduction of the degree of spasticity and improves passive range of motion.

The theoretical basis of pain treatment is the gate control theory, which states that pain signals are not free to reach the brain as soon as they are generated at the injured tissues or sites. They need to encounter certain 'neurological gates' at the spinal cord level and these gates determine whether the pain signals should reach the brain or not. In other words, pain is perceived when the gate gives way to the pain signals and it is less intense or not at all perceived when the gate closes for the signals to pass through. This theory gives the explanation for why someone finds relief by rubbing, stroking or blowing air into the injured or painful area. Pressure garments can subjectively have positive effects in pain management and its disorders.

EXAMPLES OF USE:

COMMON

EDS and CRPS
Cerebral palsy CP
Autism, ADHD, ADD
Sensitization or numbness
Ataxy, dystonia, hypotonia,
muscular dystrophy, athetosis, spasticity
Amputation
Multiple sclerosis MS, Parkinson's
Erb's paresis, serratus paresis
Rett disease, Down syndrome

INFREQUENT

Cerebrovascular diseases
TOS, Spinal cord injury, MMC
Nerve grafts
Rheumatism
Omphalocele
Klippel trenauay syndrome
Sleep disorders

UNCOMMON

Severe skleroderma / eczema
Severe acne
Epidermolysis bullosa

OBJECTIVES:

- Body control and support
- Pain management
- Controlling of muscle tone
- Awakening of deep pressure input
- Increasing functionality
- Soothing effect
- Improving body awareness
- Improving quality of sleep

SPORTS



Pressure garments are used in sports to intensify body's own abilities before, during and after performance. Pressure provides outer support for the muscle. It enhances muscle's ability to perform actively. Compression improves metabolism and expedites recovery processes. Adequate recovery is needed to improve performance and pressure garments help the body

to bounce back faster. A well-working circulation of fluids prevents cramps and minimizes risk of injuries. Pressure garments increase body awareness, deep sensory input and proprioceptors thus stabilizing the body. Pressure garments can be used in all types of sports and exercise, by top athletes and sport enthusiasts alike.

OBJECTIVES:

- Improving motor skills and proprioceptors
- Enhancing recovery, minimizing tissue edema
- Prevent incorrect posture
- Decreasing muscle pain, activating fascias

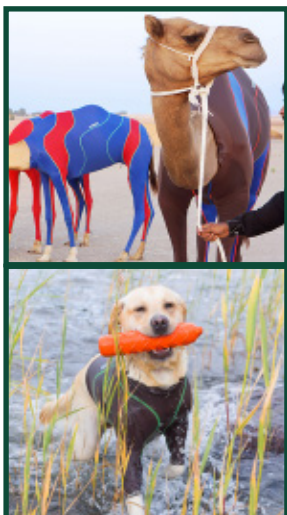
WELL-BEING



Pressure garments can be applied in everyday use to support occupational well-being and the treatment and prevention of musculoskeletal disorders (MSD). Pressure garments can increase body-awareness as well as help reduce tension, pain and incorrect posture. Simultaneously, pressure garments support metabolism and prevent swelling and fluid retention.

Those who benefit most from pressure garments are people with physically demanding work and professions that require fine motor skills of the upper body, such as construction workers, installers in various fields, dentists, musicians, and stationary office workers. Pressure garments can also help with tension headaches and migraines.

ANIMALS



Products can be used to affect different neurological disorders, calm the animal and improve concentration, even during performance, and support recovery after stressful events. Indications for products might be, e.g., sound sensitivity, fears, anxieties and hyperactivity. Products are well suitable to be used in assisting recovery after performance or work. Garments can relieve acute or chronic pain and aid post-operative recovery.

Compression garments for racing sighthounds have a harder, progressive pressure level that is designed to enhance metabolism after performance.

Garments can be manufactured to most farm and domestic animals, such as dogs, horses and camels. User base can include sports and recreational animals, service and guide animals, detection and rescue animals as well as police animal units.

www.lymedanimal.com

MEDICAL DEVICE REGULATION (EU) 2017/745

Regulation (EU) 2017/745 (MDR) on medical devices replaces the previous MDD 93/42/EEC on medical devices.

The MDR introduces new classification rules that require manufacturers to determine the risk category of their devices. To determine the category of a device in accordance with the MDR, both the intended use of the device and the risks inherent in its use must be taken into account.



LYMED CUSTOM-MADE PRODUCTS

DEVICE CATEGORY:

A DEVICE MADE FOR INDIVIDUAL USE

A device designed for individual use refers to a device intended exclusively for use by a specific designated patient, tailored to meet their individual requirements and needs. The device is manufactured in accordance with a written order issued by an authorized person, in compliance with national legislation. The device is provided with detailed specifications that must be implemented. Lymed custom-made products come with an individual packaging label and instructions for use.



LYMED STANDARD PRODUCTS

DEVICE CATEGORY:

CLASS 1 MEDICAL DEVICE

The device must meet all applicable general safety and performance requirements outlined in Annex I of the MDR. It must be accompanied by information on the safety and performance of the device, including markings, packaging, and instructions for use. Additionally, the device must bear the CE marking in accordance with Annex V of the MDR. Standard Lymed products are provided with a CE-marked packaging label and instructions for use.



REPAIRS AND MODIFICATIONS

Lymed Oy offers repair and modification services for its products. Repairs are always carried out in accordance with Lymed Oy's terms and conditions.

Before initiating any repair, please contact Lymed's customer service. If you purchased our products from a different retail point, please reach out to the dealer or distributor that served you. Repair prices are estimates and are non-binding and indicative. Each repair is evaluated on a case-by-case basis. Post-production modifications to standard-sized products will not be made.

If you are unsure whether a repair is covered by the warranty, please contact Lymed or your dealer or distributor for return instructions.

Products sent in for repair should be clean and completely dry. Lymed reserves the right to refuse repairs for products that are not properly washed. The product should be identifiable by its washing label. Lymed will not repair products that have already been repaired by another party.

Lymed reserves the right to decline repairs if the safe use of the product is compromised, if the original purpose of the product changes, or if the cost of repair exceeds the price of a new product. Lymed may also refuse to repair products that are excessively worn, where the repair would not improve the product's functionality, or if the product has been repaired or modified elsewhere than by Lymed Oy.

Repairs or modifications may result in features that differ from the original model, such as additional seams. Any inconvenience caused by these changes is the responsibility of the person ordering the repair.

Lymed recommends ordering a new product rather than repairing a worn one.

WARRANTY

Lymed's manufactured products have a warranty of 4 months and pressure guarantee of 6 months.

The warranty covers, as a general rule, only defects in product manufacturing and materials. Lymed is responsible for statutory liability for product defects, even when the product is out of warranty or no guarantee is issued.

Service products do not have the same right of withdrawal as stipulated by the Consumer Protection Act, if the service has been completed, the customer has given permission to begin production, or if the lack of a right of withdrawal was communicated in advance. This applies, for example (but not exclusively), to situations where the customer for whom the product was ordered has passed away, or if the order needs to be changed or canceled after the product delivery has already begun.

If you suspect a defect in the product, please contact our customer service.

RETURNS

Lymed custom-made products and standard-size products with modifications cannot be returned or exchanged.

The right of return does not apply to products that are manufactured or modified according to the customer's specifications (e.g., custom-made products or standard-size products ordered in a color other than the stock color).

Lymed Oy offers a 14-day return policy for products purchased directly from Lymed Oy or our online store, provided that the products are unused, in their original packaging, and the package seal is intact.

Lymed products, or any other products retailed by Lymed, cannot be returned or exchanged after the sealed package has been opened due to health and hygiene reasons. Products that have been fitted cannot be returned or exchanged.

If you have purchased the product from one of Lymed's dealers or distributors, the product should be returned to them. The return should always be accompanied by information regarding the damage claim. Please contact your dealer's customer service before returning the product.

Our full delivery and contract terms are available on: www.lymed.fi/en



ORDERING LYMED PRODUCTS

Lymed products are available for both the public and private healthcare sectors. Trained Lymed measurers can be found across all of our distributing countries. Our measurers are primarily involved in compression treatment, occupational physiotherapy, and neurological physiotherapy. They manage the entire ordering process for custom-made Lymed garments.

Standard-sized products are available directly from our distributors or from Lymed. For more details, please visit our website at www.lymed.fi/en.

ORDER PROCESS:

CUSTOM-MADE GARMENT

1. Choosing a product

- Personnel responsible for treatment determine which product is needed based on product catalogue.
- Choosing correct pressure levels or compression classes.
- Products for children made until 10 years of age.

2. Measuring and ordering

- Determining delivery and invoicing information
- Measuring the patient using instructions.
- Providing additional information, special needs and photos.

3. Sending orders to a Lymed distributor

Production time is generally 10 to 15 business days from the arrival of the order.

4. Delivery

Products are delivered to the preferred address.

STANDARD SIZED GARMENT

1. Choosing a product

Personnel responsible for treatment determine which product is needed.

2. Choosing a size

- Determining delivery and invoicing information.
- Choosing a correct size based on 1-2 measurements. Instructions found from the product catalogue.

3. Sending orders to a Lymed distributor

The usual production time is, for a non-stock standard item, 3-8 business days from the arrival of the order.

4. Delivery

Products are delivered to the preferred address.

WHEN SHOULD I ORDER A NEW PRODUCT?

Generally, it is recommended to replace or modify actively used clothing every three months. Compression garments should be replaced every six months.

The fit of the garment should be monitored regularly. It is generally recommended that a garment be replaced or re-fitted every three months to maintain optimal pressure and treatment results. Active users, such as children or working adults, may require new garments even more frequently.

The rate of wear is affected by e.g.:

- Purpose and frequency of use
- Strength of pressure or compression
- Individual solutions and anatomy of the user
- The rubbing effect of external factors and the use of other aids
- Acidity of skin
- Care and washing of the product

A PRESSURE GARMENT NEEDS TO BE REPLACED WHEN

- Patient's weight or measurements change
- Washing no longer cleans the material properly and the feel of the garment becomes greasy
- Elasticity of the product decreases and the original pressure levels change
- Garment, or a part of it, breaks down

ORDERING SPECIALIZED ITEMS

Some standard items can be ordered custom-made:

- Post-operation products: can be ordered as a Skin garment, with individual measurements
- Interim & Light products: Depending on the intended use, can be order with a custom measurement form as either a Sense or Skin product.

Ordering Sense products for pain, with edema present:

If edema is present in the initial stages of pain management, please first order a compression product. Once the edema subsides, a neurological Sense pressure garment can be ordered.

DO YOU WANT TO BECOME A LYMED MEASURER?

We are continuously training new professionals to measure and order Lymed products both in Finland and abroad through our international retailers. Our measurers are typically occupational therapists, physiotherapists, or experts in neurological occupational therapy and physiotherapy, working in both the private and public sectors.

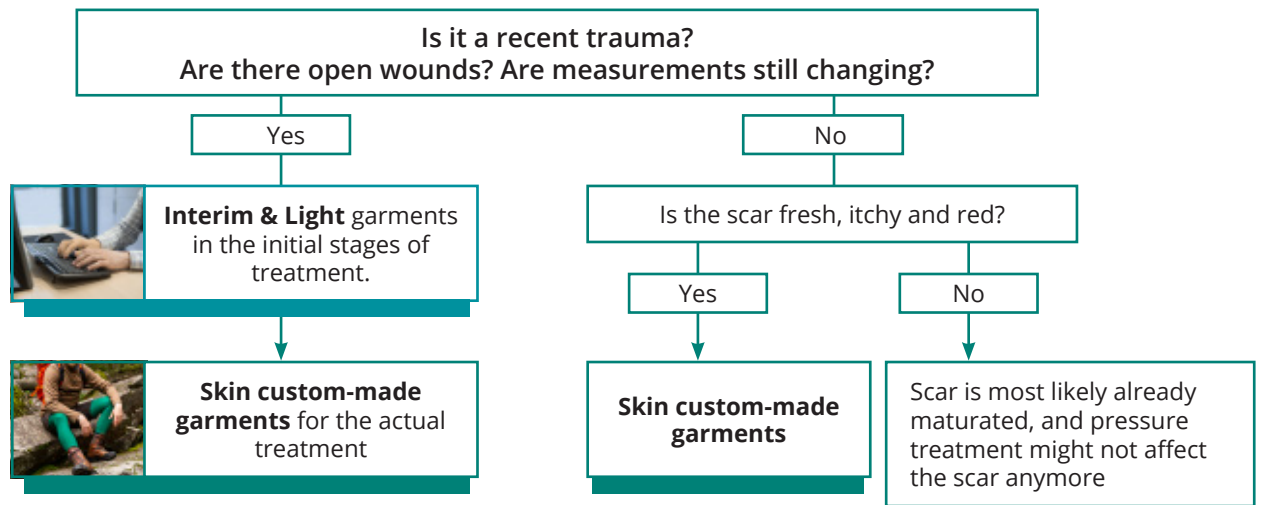
Lymed measurers manage custom-made product selections, take measurements, and submit orders to Lymed. Becoming a Lymed professional is straightforward, regardless of previous experience with medical devices. Training for ordering and measurement can be arranged as needed, either in person or remotely – we offer flexible solutions to meet all your training needs!



LYMED PRODUCT INFORMATION

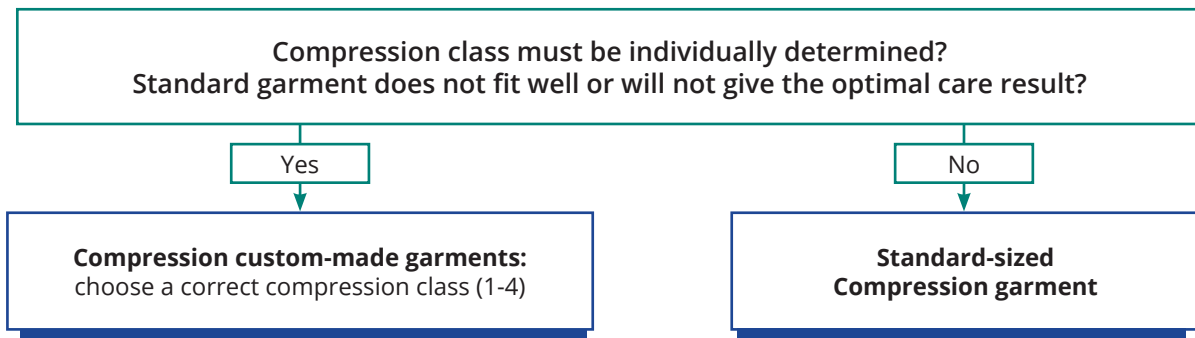
Examples on how to choose a correct Lymed product based on an indication

Burns
Skin grafts
Scar management



Edema and edema related illnesses
Lymphatic problems
Pressure ulcers

Leg ulcers
Pregnancy, travelling
Prevention



Neurological symptoms
Hypotonia or other causes of muscular debility
Motoric disorders
Serious musculoskeletal disorders

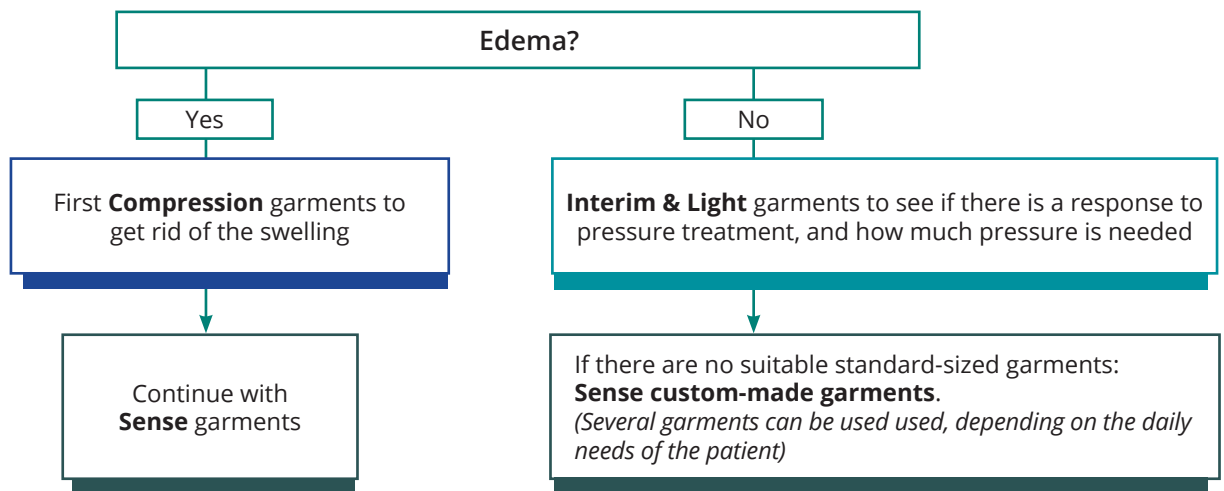
Sense products

Determine the goal of treatment and start with simple product solutions. See page 23

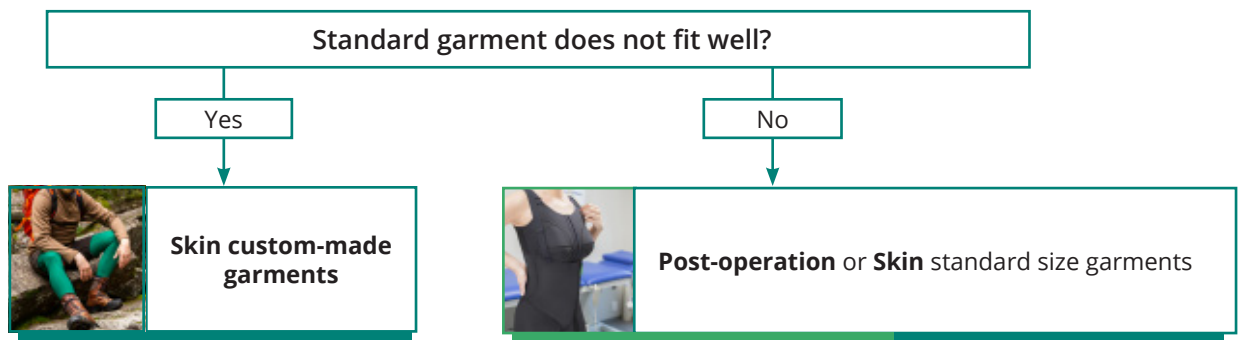
LYMED PRODUCT INFORMATION

Examples on how to choose a correct Lymed product based on an indication

Pain syndromes



Cosmetic surgeries Reconstructive surgeries Childbirth and c-section Other operations



Initial stages of musculoskeletal disorders Improving posture Well-being at work



HOW PRESSURE IS CREATED WITH GARMENTS

The effects of compression and pressure garments on the body are based on mathematically calculated pressure. Compression garments are designed with progressive compression, providing the strongest support in the extremities, which gradually decreases towards the midsection. In uniform pressure garments, the pressure is evenly distributed throughout the product.

Pressure is determined by the negative relationship between the circumference of the body part and the circumference of the garment. The fabric itself does not generate any pressure. Instead, pressure is created by our skilled production professionals using the customer's measurements. It is then calculated mathematically based on Laplace's law, as well as the elongation and recovery properties of the material.

Lymed Oy's products and materials are tested annually by specialized, independent research institutes to ensure they meet the specified compression and pressure levels, and that they also withstand the stated compression and pressure.

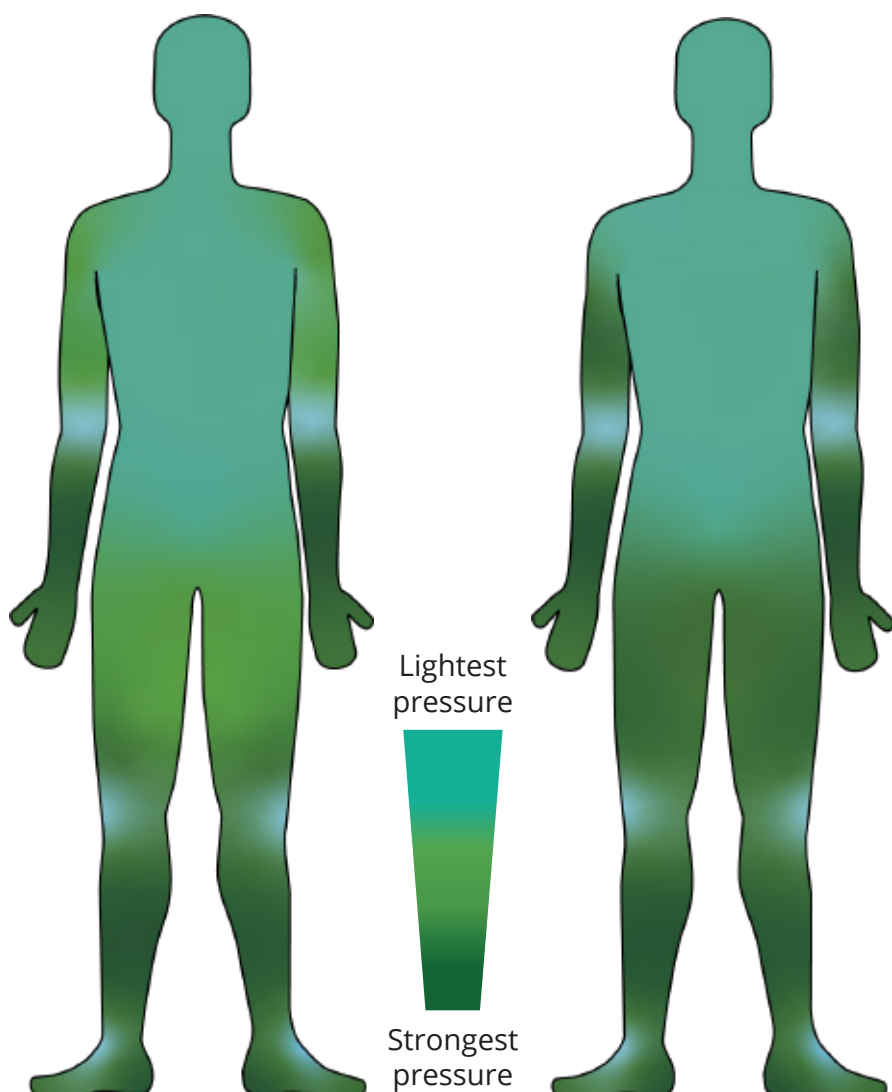
CUSTOM-MADE VS. STANDARD SIZED PRODUCT

The functionality of compression and pressure garments is influenced by several factors, ranging from the characteristics of the product to its proper use. To ensure effective pressure treatment, the most important features to consider are the correct implementation of the specified compression or pressure level, the intensity of the compression or pressure, and the product's service life.

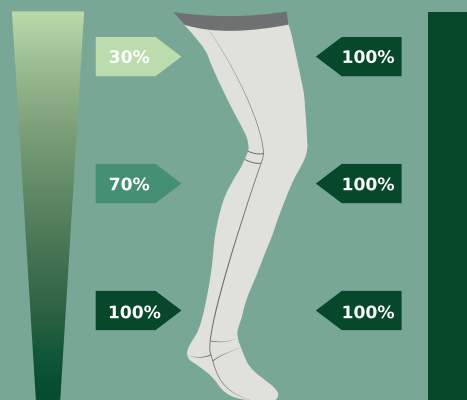
For custom-made products, the pressure level can be determined more accurately than for standard-size garments. Higher pressure levels can be used more safely in custom-made garments than in standard-size ones.

COMPRESSION

UNIFORM PRESSURE



COMPRESSION VS. UNIFORM PRESSURE



% of requested compression/pressure mmHg

COMPRESSION AND PRESSURE LEVELS OF LYMED PRODUCTS

Lymed Compression garments from class 1 to class 4 are based on the European prestandard EN 12718/2001. The various classifications have been created primarily to facilitate talking about compression levels, making diagnostic decisions, and as a tool for public health care needs. In medical compression products, such as in Lymed products, the level of compression is always reported in millimeters of mercury (mmHg), so application to country-specific classifications is not problematic.

The pressure recommendations of product groups, offered by Lymed, are based on suitability recommendations given in the literature. The compression class or pressure level of the garment is selected based on the injury, illness or area to be treated. In some cases, different pressure levels or combinations of progressive and uniform pressure are built into the same product.

THEORETICAL PRESSURE LEVELS

The pressure level is affected by the size of the product and the structure of the tissue. For standard size products, you may influence the pressure level by size selection. Resting and working pressure may vary from patient to patient.

* Lymed Sport products combine different compression classes.

** Lymed Well-being products are made by combining uniform pressure and compression.

WHY IS THE PRESSURE LEVEL REPORTED AS A RANGE?

The unit of measurement in medical pressure garments is millimeters of mercury (mmHg). The pressure class of the product indicates the lowest and highest pressures, between which the actual pressure is formed. The pressure of the product is also affected by the tissue of the body part. If the area is more solid, the product generates pressures at the top of the pressure range, and if the area is softer, the pressure generated by the product will be at the bottom of the range. This is known as pressure tolerance of the product. The actual pressure given by the product can be measured with a pressure gauge when the product is worn. Measuring devices can also be used to control the pressure throughout the use.

COMPRESSION CLASSES CCL

Progressive pressure

Compression and Sport* -products

1 15 - 21 mmHg

2 23 - 32 mmHg

3 34 - 46 mmHg

4 49 mmHg and higher

PRESSURE LEVELS

Even levels

Skin -products 23 - 30 mmHg

Lightened pressure 16 - 22 mmHg

Sense -products 9 - 30 mmHg

Light pressure 9 - 13 mmHg

Medium pressure 14 - 20 mmHg

Strong pressure 21 - 30 mmHg

Interim & Light -products 10 - 18 mmHg

Post-operation -products 23 - 30 mmHg

Well-being -products** 10 - 18 mmHg

GUIDELINES FOR DIFFERENT COMPRESSION CLASSES

CCL 1 - Mild: Varicose veins, daily swelling ie. lymphoedema, acrosyanosis, post-varicectomy and -sclerotherapy, arthrosis.

CCL 2 - Moderate: Post-thrombotic syndrome, deep venous thrombosis & insufficiency, ulcer treatment, post-trauma treatment, irreversible lymphoedema, lipoedema.

CCL 3 - Strong: Severe edema, chronic hypodermatitis, irreversible lymphoedema.

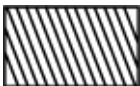
CCL 4 - Very Strong: All the pathologies listed in their most severe form.

Guidelines are based on European pre-standard EN 12718/2001.

WHY DO I HAVE TO CHOOSE BOTH THE FABRIC AND THE PRESSURE LEVEL?

The experience of a comfortable pressure garment is influenced by many things. The biggest thing we can influence is the level of pressure chosen for the user and the feel of the fabric against their own skin. Our fabrics are divided into three different categories, based on rigidity, from which the optimal pressure level for the

treatment can be constructed. By giving us the goals of the treatment, the pressure level it requires and the choice of fabric that best supports the user's everyday use, we can make a customized medical aid that is pleasant to use.



	STRONG FABRIC	MEDIUM FABRIC	LIGHT FABRIC
High durability needed*	✓	✗	✗
Composition	61 % polyamide 39 % elastane	54 % polyamide 46 % elastane	83 % polyamide 17 % elastane
Structure	Flat knitted warp knit	Flat knitted warp knit	Flat knitted warp knit
Abrasion resistance (Martindale)	>150 000	>150 000	90 000
Breathability	447 l/m²/s	466 l/m²/s	246 l/m²/s
Thickness	0,64 mm	0,57 mm	0,48 mm
UV protection	98% UV protection	98% UV protection	98% UV protection

* Recommended choice for products that demand exceptionally high durability e.g. gloves and stockings.

BREATHABLE

QUICK DRY

UV PROTECTION

MACHINE WASH

SILKY & LIGHT

NO COTTON

NON ALLERGENIC

UPF 50+
98 % UV protection



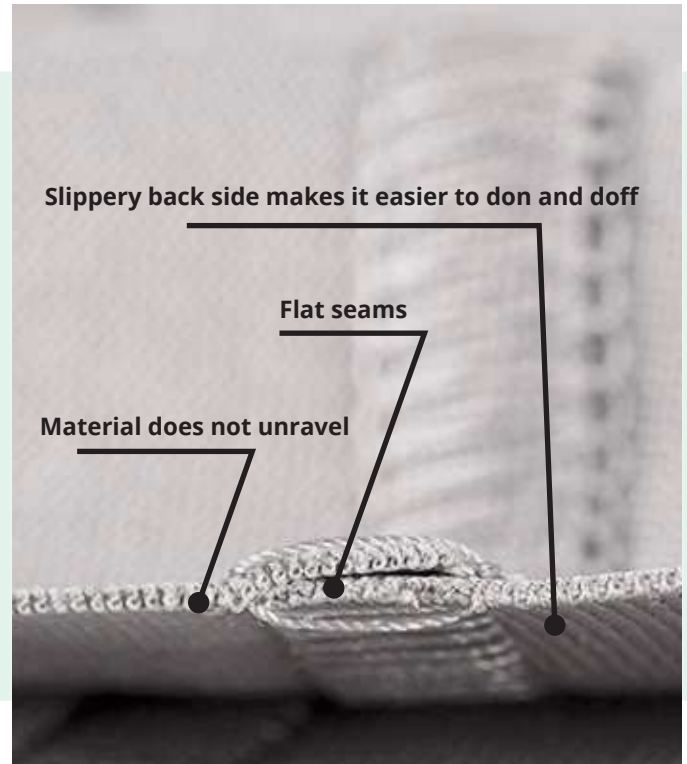
LYMED MATERIALS

Lymed's materials are exceptional in the manufacturing of pressure garments. The high-quality materials, hand-picked by Lymed, are free from rubber and other known allergens. Lymed products are made with Oeko-Tex standardized polyamide-elastane knits, manufactured in Europe without harmful chemicals. These materials are produced responsibly and ethically, without child labor.

Lymed products are made from flat-knitted warp knits, which are particularly effective at providing compression and shaping the garment's curves. One of the key benefits of warp knits is that they do not unravel.



**All Lymed materials are
manufactured in Europe.**



Fabrics are tested annually for durability, color fastness, and other properties. They undergo the most rigorous tests – their abrasion resistance exceeds 150,000 Martindales (SFS-EN ISO 12947-2). In addition, Lymed has developed non-standard, practice-simulating testing methods in collaboration with Finnish research institutes. The fabrics have an SPF of 98%. The inside of all Lymed products is designed to be slippery, minimizing extra friction during donning and doffing.

RECOMMENDED MATERIALS AND PRESSURE LEVELS

Recommended use serves as a general guideline to ensure the best possible wear and quality. The fabric of the garment is always selected to support the care prescribed by the physician, and the garment is designed to support the patient's treatment. Each garment is individually manufactured to meet specific needs. While unusual fabric

choices are possible, they may affect the garment's durability. Lymed does not provide compensation or free repairs for products using fabrics other than those recommended.

Note: Material choices for standard products and the Sport product group cannot be altered.

SKIN

NORMAL PRESSURE LEVEL



Strong fabric



Medium fabric

LIGHTENED PRESSURE LEVEL



Strong fabric



Medium fabric

SENSE

*READ MORE ABOUT
SENSE-PRODUCTS*



LIGHT PRESSURE



Medium fabric*



Light fabric



Strong fabric

MEDIUM PRESSURE



Medium fabric*



Strong fabric

STRONG PRESSURE



Strong fabric



Medium fabric

COMPRESSION

CCL 1



Strong fabric



Medium fabric

CCL 2



Strong fabric



Medium fabric

CCL 3



Strong fabric



Medium fabric

CCL 4



Strong fabric

WELL-BEING

Materials cannot be changed

SPORT

Materials cannot be changed

HOW DO I CHOOSE THE RIGHT PRESSURE AND FABRIC CHOICES FOR SENSE PRODUCTS?

- *The most common Sense product for adults and children to support functionality is a mild pressure product with our medium fabric.
- There is rarely a need to order pressure garments for functionality support with strong pressure and a strong fabric.
- We recommend that when ordering the first Sense product, always select the most typical fabric and pressure level selections for the garment.

If the user needs a more firm feeling or pressure, the feel given by the product can be modified by changing the pressure level or fabric. If a higher pressure level is not suitable for the user, then we recommend changing the fabric of the next product to a stronger fabric without changing the pressure level. This allows us to achieve a firmer feel to the product without raising the pressure level.

IS THERE OEDEMA PRESENT?

Any oedema should always be treated primarily with a compression product from the Compression product group, before switching to Sense products.

DOES THE USER HAVE PAIN SYNDROME?

The first Sense product for an adult with pain syndrome is typically one with medium pressure and a medium fabric. If the user has oedema, a compression product from the Compression Product Group must be used. Often, users with pain syndrome require several different products with varying pressure levels and fabric types. These can be adjusted daily based on the support and comfort needed. Unlike other users of Sense products, users with pain syndrome may use products with both strong pressure and strong fabric.

DOES THE USER HAVE EDS?

The pressure garments used to treat Ehlers-Danlos syndrome vary widely. Some users may not need any pressure at all, while others may require the strongest possible pressure. The challenge with long-term pressure treatment for these users is the constantly changing body circumference. Sometimes, additional fastenings or solutions are designed to allow for adjustments in the pressure garment. If it is unclear whether a mild or firm pressure is needed, it is advisable to first order the product with mild pressure and medium fabric.

PRODUCTS FOR SCAPULA WINGING

For users with Erb's palsy and serratus anterior palsy, the most typical pressure level is mild. The product can be made from strong or medium fabric.

SENSE PRODUCTS FOR CHILDREN

For children under the age of 10, as well as adults, it is a good idea to start with a product that has light pressure and medium fabric. For babies, we recommend a light fabric and light pressure. For children diagnosed with a sensitive vomiting reflex, we also recommend a light fabric and light pressure product as the first choice.



LYMED PRODUCT INFORMATION

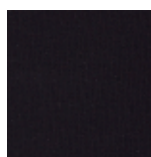
Colors

Lymed materials do not contain rubber, coated rubber or other known allergens.

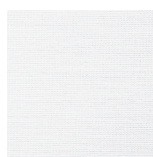
FABRIC COLORS



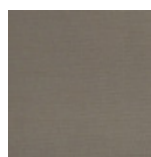
F1 Beige



F2 Black



F3 White



F4 Grey



F5 Blue



F6 Red

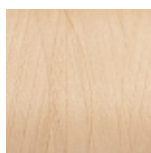


F7 Green

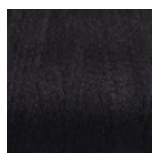
Colors in standard-sized products

Stock colors and other color options are described in each product's information. Ordering other than stock colors may affect the delivery time and the return policy.

SEAM COLORS



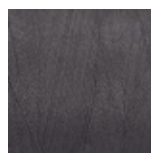
S1 Beige



S2 Black



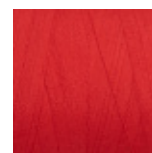
S3 White



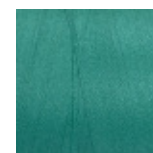
S4 Grey



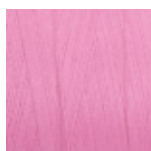
S5 Blue



S6 Red



S7 Green



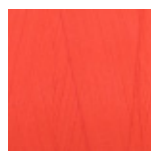
S8 Pink



S9 Bright green



S10 Yellow



S11 Orange



S12 Bright blue



S13 Purple

DECORATED EMBLEMS

SIZE (DIAMETER): 2,2 CM



P1 Cat



P2 Dog



P3 Fox



P4 Bunny



P5 Duck



P6 Strawberry



P7 Snowflake



P8 Dino



P9 Bear



P10 Beetle



P11 Ladybug



P12 Turtle



P13 Whale



P14 Flower

Our production chooses the placement of the emblem.

IRRITATION CAUSED BY SILICONE BANDS

Based on literature, most reactions caused by silicones are non-allergic and non-specific. They are typically a result of irritation, which may be caused by factors such as the skin's properties, skin care products, hygiene, and the combination of all these elements. Individual factors, like skin pH, microbes, sweat, skin lotions, and personal hygiene, can contribute to irritation.



Irritation may worsen when sweating increases, such as in higher temperatures. The irritation can be reduced by cleaning the silicone band and the skin beneath it more frequently.

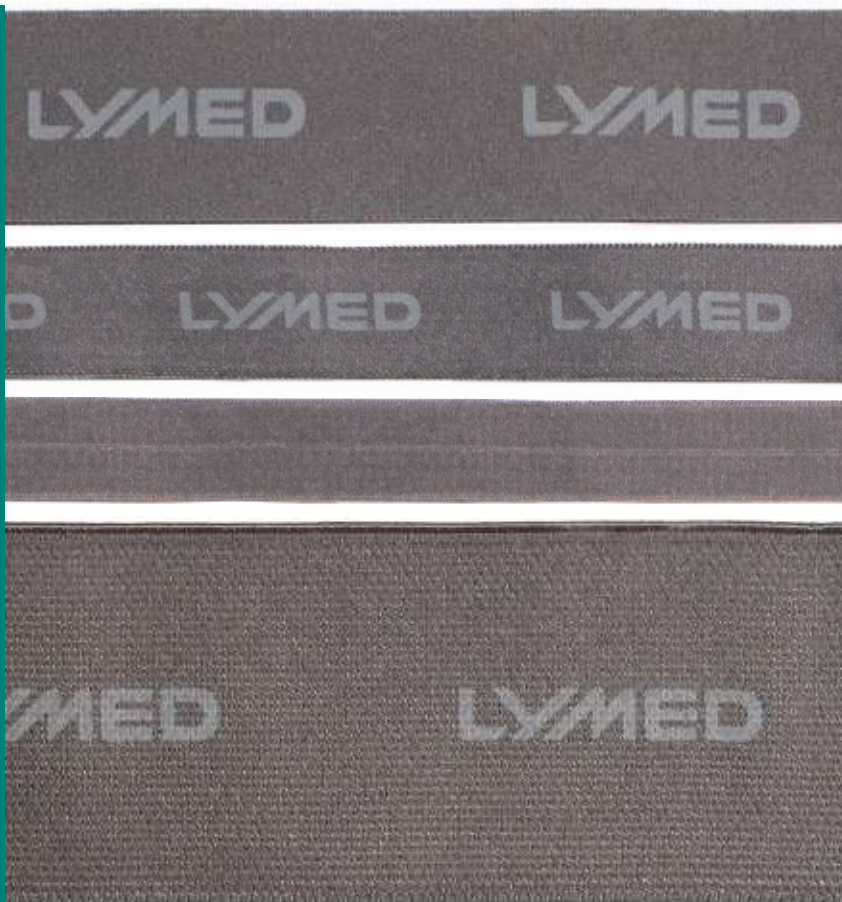
Each product can be manufactured without the silicone band or with the band repositioned. Several silicone band options are available, and they can be swapped into the product as needed. In some cases, switching to a model that does not require silicone bands at all could be beneficial (e.g., using different strap options or models with more coverage). The best silicone band options for sensitive skin are SIL 1 and SIL 2.

LYMED PRODUCT INFORMATION

Silicone and elastane bands

Lymed elastane and silicone bands do not contain rubber, coated rubber, or other known allergens. The properties of each Lymed product are outlined on the product pages, including any elastane and silicone bands used in the individual product.

ELASTANE BANDS



ELA 1

Elastane band
Width: 3 cm

ELA 2

Elastane band
Width: 2 cm

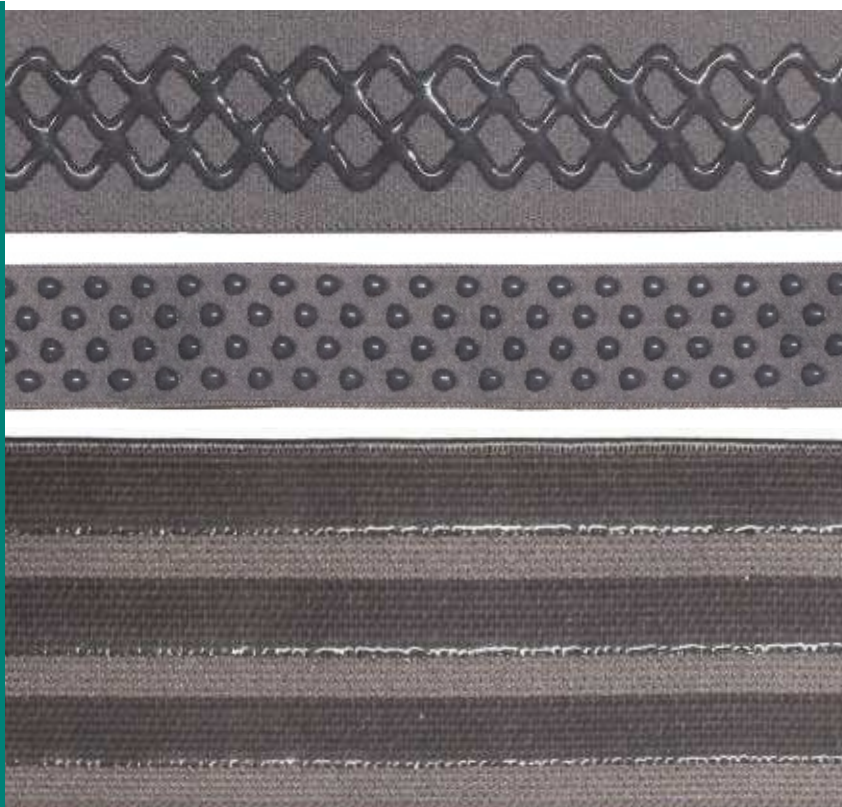
ELA 3

Edging band / elastane band
Width: 0,75 cm / 1,5 cm

ELA 4

Elastane band
Width: 5 cm

SILICONE BANDS



SIL 1

Honeycomb silicone
Width: 3 cm

SIL 2

Droplet silicone
Width: 2 cm

SIL 4

3-stripe silicone
Width: 5 cm








ORDERING AND PRODUCT CODES

The characteristics of the required pressure garment must be provided to us precisely and carefully to ensure we produce the exact product needed. The most complete product code possible must be included in the orders. The correct product code and color codes can always be found in the catalog.

ORDERING PAID ADDITIONS

An additional feature is always ordered in conjunction with the product by entering the product code, the color, and the code for any desired additional feature. We are happy to provide an estimate of the cost if additional features that differ from the basic model need to be added to the product.

COLOR CODES

-  **F1** Beige
-  **F2** Black
-  **F3** White
-  **F4** Grey
-  **F5** Blue
-  **F6** Red
-  **F7** Green

See page 24 for more info.

ADDITIONAL FEATURES FOR STANDARD PRODUCTS

GENITAL AREA

- O** Open
- C** Closed

FASTENING

- H** Hooks
- Z** Zipper

EXAMPLES OF ORDERING A STANDARD PRODUCT WITH ADDITIONAL FEATURES:



Ordering a Interim & Light vest for men with hook fastening



How to order:

STIN224336F1H

STIN224336

PRODUCT CODE

Interim & Light Vest
Men
Long sleeves
Size 6

F1

COLOR CODE

Beige

H

FASTENINGS

Hooks



Ordering compression pants for women with a high waist, genital area closed



How to order:

STPOP21534HWF2C

STPOP21534HW

PRODUCT CODE

Compression pants
Women
Ankle length
Size M
High Waist (HW)

F2

COLOR CODE

Black

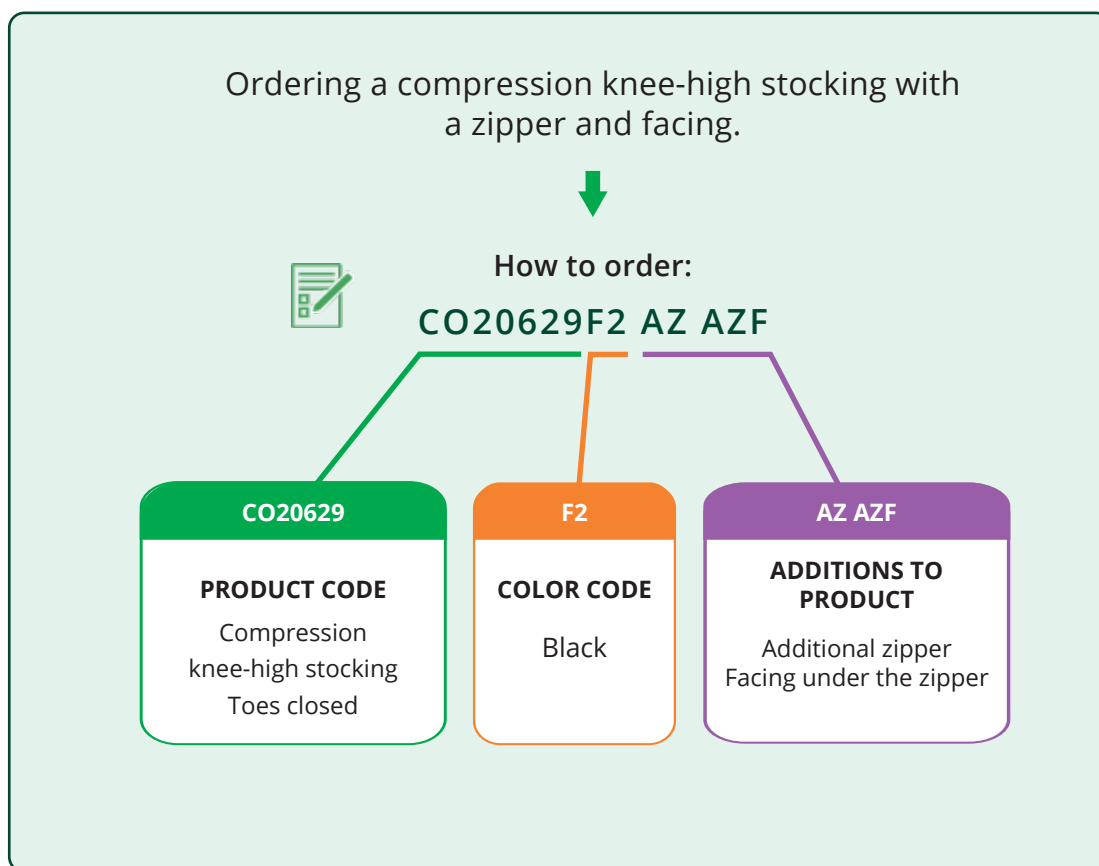
C

GENITAL AREA

Closed



EXAMPLE OF ORDERING A CUSTOM-MADE PRODUCT WITH ADDITIONAL FEATURES:



CUSTOMIZING LYMED PRODUCTS TO MEET USER NEEDS

Lymed products can be highly customized to meet the individual needs of the user. Our product catalog presents basic models of Lymed products, as well as the most common additional features that help us create the best pressure garment for the user, ensuring it fits properly and meets their treatment goals.

If the need for additional features is not known before the first order, Lymed recommends selecting a basic model of any Lymed product. Additional features may be considered later if it becomes clear that independent use of the garment is difficult, or if there is a desire to reduce the need for assisted donning and doffing.

We are happy to answer any questions related to the product and assist in designing a solution that meets the needs of both the user and the care personnel. Our customer service team works closely with our product designers and measurers to provide thorough responses. In some cases, images, preliminary measurements, and detailed background information can help clarify the specific needs more effectively.

- Small sized products for babies, exceptionally large products for bigger circumferences
- Malformations, e.g. dysmelia and extensive tissue damage
- Amputation stump modification
- Double fabrics, neoprene supports and other product reinforcements to add local pressure and support
- Splint pockets, neoprene softeners and pockets for other materials and prostheses
- Adjustable straps and velcros for facilitation of the body
- Solutions for genital area, e.g. flaps, pockets and openings

HOW CAN WE SUPPORT INDEPENDENT DONNING AND DOFFING?

- Zipper or hook fastenings – or a combination of the two
- for the sock, pelvic area of the trousers, for sleeves, for the arm of the glove, for vest, etc.
- Zipper pullers and strings



PREVENTING MATERIAL FOLDS, CREASES & ILL-FITTING PRODUCTS

- Different options of silicone or elastane bands can be added to the upper edges of products. Bands can be changed if needed.
- Additional silicone bands can be added on the inside of each product to create more friction, e.g. on the thigh area of pants.
- Products can be fastened together with hooks and velcros, e.g. fastening a vest onto pants.
- Products can have specialized fastening solutions if the choices presented in the catalogue are not a good fit.

SUPPLEMENTARY MEASUREMENT FORMS 18 AND 19

For measuring residual limbs and protruding hernia. Additionally, a supplementary measurement form for the abdominal area, which can be used if necessary to complement the basic measurement forms.

EXAMPLES OF SPECIAL SOLUTIONS



Child's Sense body with solution for easier donning and doffing - ASB Additional push button fastening



Special solution for a bra, for the care of the amputation area

EXAMPLES OF CUSTOM-MADE PRODUCTS BASED ON USER NEEDS



ADDITIONS FOR CUSTOM-MADE PRODUCTS

- Not all add-ons are available for all product options.
- Lymed will contact the ordering party if the feature cannot be implemented.
- Finishing options are mainly the most common options for adult models. The suitability of these options is assessed on the basis of the order.
- Ask your Lymed distributor about the cost of the additional features.
- Children's sizes are made for children under 10 years of age.

Vests and bodys

Addition code

MAMMARY CUPS

Contains one or two customized cups.



MC

TURTLE NECK

Raised collar in double fabric.



AC

TURTLE NECK WITH NEOPRENE

Raised collar with neoprene filling.

ACN

DIAPER FLAP

A fabric flap attached to a vest that goes between the legs. Different from a bodysuit style. Default fastening: push buttons. Velcro fastening available upon request.

ADF

SHORT LEGS FOR BODYS

Short legs reaching to the level of the crotch attachment.

Adults

PR/CO/SE A21L

Children

PR/CO/SE A10L

SENSE: DOUBLE SCAPULA SUPPORT

For paresis shirt or bodysuit when double-sided scapula support is needed for the product.

SEE2

Gloves

Addition code

ADDITIONAL DIGIT TO PALM-GLOVE

Addition of one finger. For adding multiple fingers, use the code for glove. The thumb is part of the basic gauntlet model.



ADP

LYMED PRODUCT INFORMATION

Additions for custom-made products

Sleeves

Addition code

SLEEVE FASTENING - MODEL 1

Elastic strap running under the breasts to hold the sleeve up. Suitable especially for users with large breasts.

Adults **A20S1**

Children **A10S1**

SLEEVE FASTENING - MODEL 2

Elastic strap running under the axilla to hold the sleeve up.

Adults **A20S2**

Children **A10S2**

SLEEVE FASTENING - MODEL 3

Fastening model used to join two axilla length sleeves. Two sleeves need to be ordered with the fastening.

Adults **A20S3**

Children **A10S3**

Pants and stockings

Addition code

SHOULDER STRAPS FOR PANTS

Image on page 64.

AB

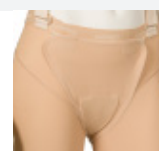
ADDITIONAL FLAP FOR GENITAL AREA, FABRIC

Used in pants to create local additional pressure.
Fixed to the crotch, with a velcro fastener on the lower abdomen.

AF

ADDITIONAL FLAP WITH NEOPRENE FOR GENITAL AREA, FABRIC

Used in pants to create local additional pressure.
Fixed to the crotch, neoprene lining and with a velcro fastener on the lower abdomen.



AFN

HIGH WAIST, CUSTOM

Increasing the waist height of pants, requires additional circumference measurement.
Image on page 64.

HW

MATERNITY BELLY FOR PANTS

A maternity-style belly section for custom made pants. Image on page 67.

AM

ADDITIONAL DIGIT TO OPEN TOED SOCK

Addition of one toe. For adding multiple toes, use the code for foot glove.

ATP

WAIST STRAP

Non-removable, adjustable waist band to help keep the thigh sock or thigh leg in place.
Image on page 40

Adults **A20B**

Children **A10B**

More additions on the next page

LYMED PRODUCT INFORMATION

Additions for custom-made products

Fastenings and pulls		Addition code
ADDITIONAL ZIPPER FASTENING Max 45 cm long. Typically as a full-length zipper for knee socks. Includes a soft zipper pull tab.		AZ
ADDITIONAL LONG ZIPPER FASTENING Over 45 cm long. E.g. a full-length zipper for thigh socks. Includes a soft zipper pull tab.		AZ2
ADDITIONAL HOOK FASTENING		AH
ADDITIONAL PUSH BUTTON FASTENING		ASB
VELCRO FASTENING TO ATTACH PRODUCTS TOGETHER Eg. attaching vest and trousers. Price includes max 4 velcro fasteners and protective velcro pads.		AVSE
FUNCTIONAL LOOP OR PULL A loop or a pull designed for functional use, to be implemented according to the customer's wishes. Made with Lymed's selection of bands, most commonly ELA or SIL. Price includes a velcro attachment.		ALS1 ALS2
Use and dressing		Addition code
ZIPPER GUARD A soft protective strip placed underneath the zipper to prevent skin or hair from getting caught in the zipper.		AZF
DRESSING AID HOOKS Individual hooks or a sparse hook list placed underneath the zipper to facilitate zipping up. Without additional request, one hook for knee-high stocking, two hooks for thigh-high stocking, and 2-3 hooks are placed in a shirt.		AHZ
GRIP SILICONE - INSIDE An additional silicone strip to prevent the product from slipping, for example, in sleeves or thigh-high stockings. The choice of strip is based on the customer's preference. Read more on page 25.		ASI2
GRIP SILICONE - OUTSIDE A silicone strip placed on the outside of the product to improve grip, for example, on fingertips or the sole of a foot.		ASI
ZIPPER PULL TAB The zipper pull tab attached to the zipper slider to facilitate the closing of the zipper. There are two options for the length of the pull tab: short (9 cm) and long (15 cm). The default length is short.		AZL
PULL-UP LOOP A loop attached to the product to aid in dressing. The length and material are determined during pattern making.		APH
ADDITIONAL VELCRO Used to facilitate the closing of a zipper, for example, placed on top of the zipper. Priced in sets of 4.		AV

LYMED PRODUCT INFORMATION

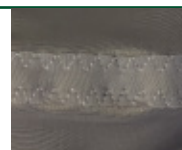
Additions for custom-made products

Linings and reinforcements

Addition code

SEAM REINFORCEMENT/LINING WITH FABRIC STRIP

Reinforcing/lining a seam with an additional strip of fabric.
Sewing the strip adds more stitching compared to the original product design.



ASRF

PARTIAL LINING WITH FABRIC

Partial lining of the product according to the desired design. Used to add pressure, durability, or local protection.
Requires additional stitching compared to the original product design.

Small partial lining, approx 10x15 cm without crossing any seams.
E.g. ankle, elbow bend, heel

AL1

Medium-sized partial lining less than 20x15 cm or lining that extends to two pieces of the product.

AL2

Large partial lining over about 20x15 cm or lining that extends to three pieces of the product.
E.g. shoulder lining

AL3

DOUBLE FABRIC

An entire piece of the product is made with double material to add pressure or durability, for example, the sole.
The code is used when doubling is identical to the original piece. Doubling a piece does not require additional stitching. The double fabric often makes the product more rigid, which can affect the dressing.

Small size

ALD1

Medium size

ALD2

Large size

ALD3

SEAM REINFORCEMENT WITH ADDITIONAL STITCHING

Reinforcing a few seam sections with additional stitching on top of the basic seam.
It is not recommended to reinforce the entire product.
Reinforcement slightly changes the feel of the seam.



ASRZ

SOCKS: REINFORCEMENT STITCHING

Reinforcing stitching at the heel, ankle, and foot of the basic seam.
Reinforcement slightly changes the feel of the seam.

ASRZ1

Sense functional supports

[Read more on page 38](#)

Addition code

LIGHT PELVIC FUNCTIONAL SUPPORT

ASPL

STRONG PELVIC FUNCTIONAL SUPPORT

ASPS

FUNCTIONAL SUPPORT, BACK

ASVS

FUNCTIONAL SUPPORT, SHOULDERS

ASVC

STRONG FUNCTIONAL SUPPORT, SHOULDERS


ASVU

OTHER FUNCTIONAL SUPPORT

ASFM

LYMED PRODUCT INFORMATION

Additions for custom-made products

Pockets	Addition code
POCKET	
A feature in a product for inserting soft materials, fillings or small devices.	
Small, approx. 10 x 15 cm, that does not exceed the product's seam.	AP1
Medium, approx. 20 x 15 cm, or extending to two pieces of the product.	AP2
Large, approx. 20 x 15 cm, or extending to three pieces of the product.	AP3
POCKET WITH NEOPRENE	
A pocket containing neoprene to create additional pressure or to fill hollow areas in the body.	
Small, approx. 10 x 15 cm, that does not exceed the product's seam.	APN1
Medium, approx. 20 x 15 cm, or extending to two pieces of the product.	APN2
Large, approx. 20 x 15 cm, or extending to three pieces of the product.	APN3
POCKET FOR PROSTHESIS	
Pocket for breast prosthesis. Side opening for inserting the prosthesis.	APP
Miscellaneous	
ADDITIONAL OBLIQUE SHAPING OF AN EDGE	
A custom asymmetrical design differing from the default shape of the edge. E.g. raising the top edge of a sleeve or stocking, additional shaping of an open-toe sock, or an oblique hem of a shirt.	AME
POUCH FOR AMPUTATED LIMB	
Shaping the end of a sleeve or pant leg into a pouch. Used for protecting and shaping the stump. Can be used in conjunction with a prosthesis. The shape of the stump determines the pattern: a round base or shaped seams.	AAC
OPENING	
An opening for a stoma or PEG button. Usually added as modification after manufacturing. Shipping costs are the customer's responsibility.	
FABRIC FLAP FOR OPENING	
A fabric flap to cover the opening. Velcro fastening. Used in addition to ASTO code.	ASTO
FABRIC FLAP FOR OPENING	AFC
ADDITIONAL NEOPRENE	
An additional neoprene piece that is usually identical to the one made for the pocket. Price is for a piece about the size of a palm.	AN
ADDITIONAL EMBLEMS	
The product includes one free emblems. More emblems are priced per piece. Read more on page 24.	DE
MULTICOLOUR	
Adding a second different coloured seam or fabric piece to the product. Price is per one change. Up to 2 different seam and fabric colours can be added to the product. The pattern maker decides the colour arrangement, but the customer's possible preferences are taken into account. One seam and fabric colour can be selected for the product free of charge.	AMC
OTHERS NOT LISTED	
Price is based on the scope of the work.	AA

CUSTOMISATION OPTIONS FOR STANDARD-SIZED PRODUCTS

NOTE: Customized products are not eligible for returns

Vests and sleeves

Addition code

ENLARGED NECKLINE

Enlarged neckline, max 3cm lower than the standard model. Indicate desired enlargement in centimeters

ANR

HEMLINE EXTENSION

Indicate desired extension in centimetres.

AVLW

HEMLINE SHORTENING

Indicate desired shortening in centimetres.

AVSW

SLEEVE LENGTHENING

For vests and separate sleeves. Indicate desired extension in centimetres.

ASLR

SLEEVE SHORTENING

For vests and separate sleeves. Indicate desired shortening in centimetres.

ASSR

Pants

Addition code

OPEN GENITAL AREA

OS

SHOULDER STRAPS

ABS

WAIST HEIGHT INCREASE

Indicate desired increase in centimetres.

AHW

LEG LENGTH SHORTENING

Indicate the desired shortening in centimeters

ALLS

LEG LENGTHENING

Indicate the desired lengthening in centimeters. Circumference of the lengthening is the same as of the leg hem.

ALLL

MEN'S SEAMLESS FRONT PIECE FOR COMPRESSION PANTS

Front piece without anatomical design, no pouch on genital area.

AMFP

LYMED PRODUCT INFORMATION

Customisation options for standard-sized products

Gloves

Addition code

FINGER LENGTH SHORTENING

Shortening of one or several digits. Indicate desired shortening in centimeters.

ALF

GLOVE WRIST LENGTHENING

Maximum lengthening of the wrist is 5cm. The circumference of the wrist grows moderately towards the end. Indicate lengthening in centimeters.

AGR

POCKET FOR GLOVE

Pocket on the hardel side of the glove. Desired filling can be added

AP

POCKET WITH NEOPRENE FOR GLOVE

Pocket with neoprene on the hardel side of the glove. Filling can be changed.

APN

Fastenings and pulls

Addition code

ADDITIONAL ZIPPER

Indicate the desired location of the zipper in the order form.

left	AZSL
right	AZSR
middle	AZSM
back	AZSB

DRESSING AID HOOKS FOR ZIPPER

Individual hooks underneath the zipper to facilitate zipping up. The amount is standard based on a product from 1 to 3 hooks.

1 pcs	AHZS
2 pcs	AHZS2
3 pcs	AHZS3

SILICONE STRIP

Silicone strip to hold the product in place. Pattern designer decides the location depending on the product.

1 pcs	ASI2S
2 pcs	ASI2S2
3 pcs	ASI2S3

FASTENING MODEL CHANGE

Does not apply to bras, bands or helmets.

removal	AHL
change to zipper	AHLZ
change to hooks	AHLH

Bras

Addition code

CLOSED HOOK BRA STRAPS

Closed hook to bra straps, adjustable.

ABB

LOW ARMHOLE, COMPRESSION BRA

2cm lower armhole on a standard compression bra

AAR

STRONG SUPPORT BRA: POCKET FOR PROSTHESIS

left	APPBL
right	APPBR
both	APPBB

LYMED PRODUCT INFORMATION

Customisation options for standard-sized products

Miscellaneous

Addition code

DECORATIVE EMBLEM

Cat	DESP1	Dino	DESP8
Dog	DESP2	Bear	DESP9
Fox	DESP3	Beetle	DESP10
Bunny	DESP4	Ladybug	DESP11
Duck	DESP5	Turtle	DESP12
Strawberry	DESP6	Whale	DESP13
Snowflake	DESP7	Flower	DESP14

STANDARD ITEM IN NON-STOCK COLOR

Standard gloves and gauntlets, helmets, chin straps and collar can be ordered in all available colours

ANSC

EDGING OPTION CHANGE

Create the code by selecting the location of the edge, and then the code for the desired edging option.

Examples:

Silicon 2 to upper edge of sleeve: **ACBU SIL2**

Silicone 4 to pants waist: **ACBW SIL4**

Vest armhole with finishing: **ACBB finishing**

Silicone 1 to vest hemline: **ACBH SIL1**

LOCATION	EDGING
hemline	ACBH
waist	ACBW
upper edge	ACBU
lower edge	ACBD
leg	ACBL
sleeve	ACBS
arm of glove	ACBG
gauntlet	ACBP
armhole	ACBB
	ELA1
	ELA2
	ELA3
	ELA4
	SIL1
	SIL2
	SIL4
	no finishing
	finishing

MODIFIED LENGTH FOR ABDOMINAL BAND OR SUSPENSOR

Maximum modification to standard size -40cm / +15cm

AABLR

- Not all add-ons are available for all product options.
- Lymed will contact the ordering party if the feature cannot be implemented.
- Finishing options are mainly the most common options for adult models. The suitability of these options is assessed on the basis of the order.
- Ask your Lymed distributor about the cost of the additional features.
- Children's sizes are made for children under 10 years of age.

SENSE FUNCTIONAL SUPPORTS

LYMED'S FUNCTIONAL SUPPORTS

Based on our order history and experience, we have identified the most effective basic range of functional supports for easy ordering by customers in the SENSE product category.

WHEN TO CHOOSE FUNCTIONAL SUPPORT?

Supports can be used when the support provided by regular product features is not sufficient or when there is a desire to have a more significant impact on the user's body posture experience. Functional supports work best when you want to enhance body awareness in a specific area of the body or remind the user to maintain a certain posture. Please note that the experience is always individual.

FUNCTIONAL SUPPORT OR DOUBLE FABRIC?

If the aim of the SENSE product is to provide more supportive effect, you can also order parts of the product with double fabric or lining, just like in other product categories. It should be noted that extensive reinforcements will increase the overall pressure level of the product, increase the product's stiffness, and may pose additional challenges when donning.

MORE IS NOT ALWAYS BETTER

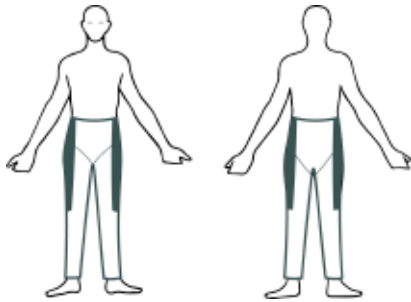
When aiming for a localized feeling of additional support, the functional support must be targeted and proportionately small compared to the rest of the product. If linings, reinforcements and double fabrics are added to the product excessively, it only increases the overall pressure and stiffness, causing the sense of localized, targeted support to disappear. In such cases, donning may become more difficult and the sensation may even become uncomfortable.



- We recommend ordering a basic model as a first Lymed product, before trying functional supports.
- We recommend ordering functional supports primarily for long-legged and long-sleeved products.
- The intensity of the sensation provided by the supports is significantly influenced by the customer's body shape, as well as the material and pressure level of the product ordered as a base.
- Supports are made from strong fabric and sewn on the outside of the product.
- The design and size of the supports are standardized and adjusted to the custom-ordered product.
- Functional supports use a sturdier seam type, different from the other seams of the product.

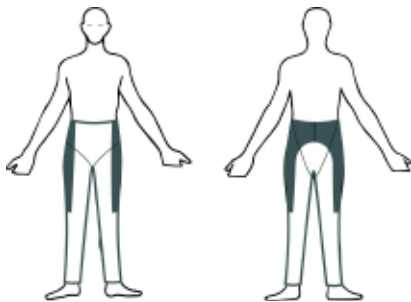


SENSE - FUNCTIONAL SUPPORTS FOR LOWER BODY



ASPL - LIGHT PELVIC FUNCTIONAL SUPPORT

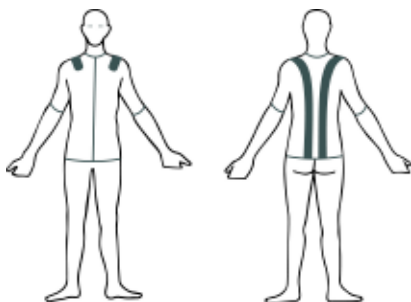
Provides a sense of support and posture to the midriff. Helps to perceive the position of the pelvis if the support provided by regular pressure pants is insufficient



ASPS - STRONG PELVIC FUNCTIONAL SUPPORT

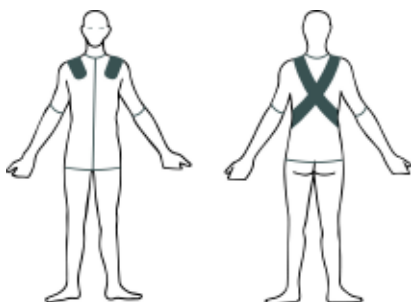
Provides a strong sense of support and posture to the midriff. Helps to perceive the position of the pelvis if the support provided by regular pressure pants is insufficient.

SENSE - FUNCTIONAL SUPPORTS FOR UPPER BODY



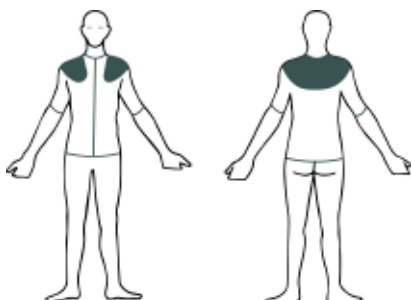
ASVS - FUNCTIONAL SUPPORT, BACK

Provides a sensation of support to the upper body and shoulders, aiding in perceiving upper body posture. The most significant experiential impact is on maintaining a straight back and relaxing the shoulders.



ASVC - FUNCTIONAL SUPPORT, SHOULDERS

Provides a sense of support to the upper body and shoulders, while aiding in perceiving upper body posture. The most significant experiential impact is on relaxing the shoulders and guiding them backward.



ASVU - STRONG FUNCTIONAL SUPPORT, SHOULDERS

Provides an extremely strong sensation of support to the shoulders, upper arms, and upper back.

ASFM - OTHER FUNCTIONAL SUPPORT

Choose the shape and location freely.

THE LARGEST SELECTION OF STOCKING CHOICES AVAILABLE!

Lymed stockings are manufactured with an even pressure or compression. Compression stockings are manufactured in various compression classes. Compression stockings are available in preventive compression class A and medical compression classes 1-4. Official compression products in classes 1-4 are known as medical compression stockings. Also, terms “medical compression socks or stockings” or “therapeutic compression socks” are in use.

Medical products made with compression or even pressure, are suitable for the treatment of diseases and conditions. Lymed custom-made stockings are made in Tampere, from start to finish. Lymed can manufacture challenging product solutions and personalized choices to all of its stockings.

EASY APPLICATION AIDS

There are different solutions available for donning and doffing of Lymed stockings. The most popular is the zipper, which can be manufactured almost anywhere on the product, in all lengths.

Additions to products can be considered when there are difficulties in using the basic models, or there is a need for independent donning and doffing.

POPULAR ADDITIONS TO STOCKINGS

- Zippers: partial or full length
- Zippers with guard to protect the skin underneath
- Waist straps
- Hooks, velcros or a combination of the two
- Additional silicone bands
- Zipper pullers and strings
- Pockets, fillings and solutions to help the changing of dressings



Anatomical
ankle construction



Thigh-high stocking
with waist strap

LYMED PRODUCT INFORMATION

Stocking options

ZIPPER CHOICES FOR LYMED STOCKINGS

A zipper can be placed almost everywhere on the product, based on preference of the client and how the stocking will be donned. Assistive hooks can be added beneath the zipper to ease with the process of putting the stocking on.

Zipper solutions are handy in wound care and changing of wound dressings, e.g. in leg ulcers. Zipper is a helpful and fast solution in assistive donning & doffing. In independent donning zipper may remove the need for other donning & doffing aids.

Zipper locations:

- Interior, front
- Exterior, front
- Middle, front (default location)



Full length, open edge

Full length, intact edge

Partial length



TIP CHOICES FOR STOCKINGS

Stockings can be manufactured with various tip models depending on the client's personal needs.

- Toes open or closed
- Foot glove and other special models
- Separate foot glove which enables the use of a foot glove and stockings separately, if needed.



Foot glove



Toes closed

Toes open

Foot glove,
closed tips

Foot glove,
open tips

Tabi sock

Big toe sock



SKIN™

SKIN™

PRESSURE GARMENTS FOR SCAR MANAGEMENT



Custom-made

Standard size

Pressure treatment can be used as a prophylactic measure for wounds or skin grafts that do not heal as fast thus having an increased risk of hypertrophic scars. Garments should be used as soon as the healing skin can tolerate the optimal scar treatment pressure. Lymed Skin products are available for all body parts, and products are mainly custom-made.

Lymed Skin garments for scar treatment are manufactured with even pressure. In even pressure garments the pressure is evenly distributed throughout the product. Products are used for individual scar treatment with optimal scar management pressure.

To ensure product's safety, Lymed recommends to have a critical approach towards suitability of standard-sized products in scar treatment. According to literature, optimal benefits from pressure treatment cannot be achieved if the garment is too loose. On the other hand, too tight or an ill-fitting product may cause a negative effect. Lymed recommends that garments should be custom-made to sustain optimal pressure without causing tissue damage. The fit of the product should be monitored regularly.



Product picture, code:
PR22432F5

VEST

Custom-made

Model	Product / Art.No			
	Sleeveless	Short sleeves	Long and short sleeve	Long sleeves
Women	PR21411	PR21422	PR21423	PR21433
Men	PR22411	PR22422	PR22423	PR22433
Children	PR10411	PR10422	PR10423	PR10433

Product information:

Long-sleeved vest with anatomical elbow construction. In a product made with strong fabric, the axilla construction primarily made from medium fabric. Women's vest with anatomical breast construction. Without request: manufactured with hooks.

Recommended material:	Strong, medium
Colors available:	All
Fastening:	Hooks / zipper with guard / no fastening
Details:	Hemline SIL 1
	Neckline ELA 3
	Edge of sleeve ELA 2
	Sleeveless model, edging ELA 3

Instructions on forming product codes, page 26.



ABDOMINAL SUPPORT

Custom-made

Model	Art.No
Women	PR21400
Men	PR22400
Children	PR10400

Product information:

Used whenever extra pressure is needed on the midsection. Without request: manufactured with hooks.

Recommended material:	Strong, medium
Colors available:	All
Fastening:	Hooks / zipper with guard
Details:	Upper edge SIL 1
	Lower edge SIL 1

Product picture, code: PR22400F1



Product picture, code: STPR714F2

STERNAL STRAP Narrow front

Standard size

Size	Width*	Circumf.**	Art.No
	cm	cm	
XS	4,0	50 - 62	STPR712
S	4,4	63 - 75	STPR713
M	4,8	76 - 88	STPR714
L	5,3	89 - 101	STPR715
XL	5,7	102 - 114	STPR716

Product information:

Two-piece product with velcro fastening on sides and shoulders. Suitable for scar treatment on sternal area e.g. after open heart surgery. Narrow model is especially suitable for women.

*Width of the front piece at the narrowest part

**Circumference of the chest below breasts.

Material: Polyamide elastane blend

Color: Black

Pressure level: Adjustable

Fastening: Velcro fastening

Instructions on forming product codes, page 26.



Product picture, code: STPR724F2

STERNAL STRAP Wide front			Standard size
Size	Width* cm	Circumf.** cm	Art.No
S	10,0	63 - 75	STPR723
M	10,0	76 - 88	STPR724
L	10,0	89 - 101	STPR725
XL	10,0	102 - 114	STPR726

Instructions on forming product codes, page 26.

Product information:

Two-piece product with velcro fastening on sides and shoulders. Suitable for scar treatment on sternal area e.g. after open heart surgery.

Splint pocket in the front with a removable pad for extra pressure.

*Width of the front piece is 10 cm at the narrowest part.

**Circumference of the chest below breasts.

Material:	Polyamide elastane blend, polyester polyurethane pad
Color:	Black
Pressure level:	Adjustable
Fastening:	Velcro fastening



Product picture, code:
PR104033F7

BODY					Custom-made
Model	Product / Art.No				Additions
	Sleeveless	Short sleeves	Long and short sleeve	Long sleeves	Short legs
Women	PR214011	PR214022	PR214023	PR214033	PRA21L
Children	PR104011	PR104022	PR104023	PR104033	PRA10L

Product information:

Long-sleeved body with anatomical elbow construction. In products made with strong fabric, axilla construction primarily made from medium fabric. Women's body with anatomical breast construction. Basic model is shaped as high-cut brief, excluding legs. Without request: made with hooks

Recommended material:	Strong, medium
Colors available:	All
Fastening:	Hooks/ zipper with guard at the front Push-buttons at the crotch
Details:	Neckline and leg opening ELA 3 Edge of sleeve ELA 2 Sleeveless model, edging ELA 3
Children - Short legs:	edge of leg ELA 2, crotch closure
Women - Short legs:	edge of leg ELA 2, no crotch closure

Instructions on forming product codes, page 26.



Product picture, code:
PR225249F4

Product information:

Anatomical construction at the knee and ankle. Constructions made from medium material when product is manufactured from strong material. Men's models with contouring at the front.

Recommended material: Strong, medium

Colors available: All

Details: Waist ELA 1
Leg opening ELA 2

PANTS

Custom-made

Model	Product / Art.No						
	Short legs	Short and long leg	Short leg and leg with stocking OPEN / CLOSED	Long legs	Long leg and leg with stocking OPEN / CLOSED	Short leg and leg with foot glove, toes OPEN / CLOSED	Long leg and leg with foot glove, toes OPEN / CLOSED
Women	PR21522	PR21523	PR21524 8/9	PR21533	PR21534 8/9	PR21524FG 8/9	PR21534FG 8/9
Men	PR22522	PR22523	PR22524 8/9	PR22533	PR22534 8/9	PR22524FG 8/9	PR22534FG 8/9
Girls	PR11522	PR11523	PR11524 8/9	PR11533	PR11534 8/9	PR11524FG 8/9	PR11534FG 8/9
Boys	PR12522	PR12523	PR12524 8/9	PR12533	PR12534 8/9	PR12524FG 8/9	PR12534FG 8/9

STOCKINGS

Custom-made

Model	Product / Art.No					
	Stockings, tips open	Stockings, tips closed	Stockings, one leg with foot glove, toes open	Stockings, one leg with foot glove, toes closed	Stockings with foot gloves, toes open	Stockings with foot gloves, toes closed
Women	PR215448	PR215449	PR21544FG8	PR21544FG9	PR21544FG28	PR21544FG29
Men	PR225448	PR225449	PR22544FG8	PR22544FG9	PR22544FG28	PR22544FG29
Girls	PR115448	PR115449	PR11544FG8	PR11544FG9	PR11544FG28	PR11544FG29
Boys	PR125448	PR125449	PR12544FG8	PR12544FG9	PR12544FG28	PR12544FG29



Product picture, code: PR20603F6



Product picture, code: PR20603F1

LEG				Custom-made
Model	Product / Art.No			Additions
	Ankle-knee	Knee-thigh	Ankle-thigh	Waist strap
Adults	PR20601	PR20602	PR20603	A20B
Children	PR10601	PR10602	PR10603	A10B

Product information:

Ankle-thigh model with anatomical knee construction. Constructions made from medium material, when product is manufactured from strong material.

Recommended material:	Strong, medium
Colors available:	All
Fastening:	None
By request:	Zipper / hooks / waist strap for thigh-high models ELA 4 Strap always in the same color as fabric.
Details:	Upper edge SIL 4, upper edge in knee-high SIL 1, lower edge ELA 2.

Instructions on forming product codes, page 26.



Product picture, code:
PR20639F4 A20B



Product picture, code:
PR20629F4 AZ



Product picture, code:
PR20619F4



Product picture, code:
PRA20T9F2

STOCKING

Custom-made

Model	Toes	Product / Art.No			Additions
		Ankle-high	Knee-high	Thigh-high	Waist strap
Adults	Closed	PR20619	PR20629	PR20639	A20B
Adults	Open	PR20618	PR20628	PR20638	A20B
Adults	Toe sock, closed	PR20619FG	PR20629FG	PR20639FG	A20B
Adults	Toe sock, open	PR20618FG	PR20628FG	PR20638FG	A20B
Children	Closed	PR10619	PR10629	PR10639	A10B
Children	Open	PR10618	PR10628	PR10638	A10B
Children	Toe sock, closed	PR10619FG	PR10629FG	PR10639FG	A10B
Children	Toe sock, open	PR10618FG	PR10628FG	PR10638FG	A10B

Product information:

Anatomical knee and ankle constructions. Constructions made from medium material, when product is manufactured from the strong material. The tip of the open-toe sock is slightly angled. Order a knee-high stocking when the length of the shaft is greater than the ankle-floor length measurement (L67/R67).

Recommended material: Strong, medium

Colors available: All

Fastening: None

By request: Zipper / hooks /
Waist strap for thigh-high model ELA 4

Strap always in the same color as fabric.

Details: Upper edge: SIL 1, upper edge in thigh-high SIL 4,
lower edge, tip open ELA 2.

FOOT GLOVE

Custom-made

Model	Toe tips	Art.No
Adults	Closed	PRA20T9
Adults	Open	PRA20T8
Children	Closed	PRA10T9
Children	Open	PRA10T8

Product information:

For the treatment of foot or toes. Can be used by itself or e.g. with an open toe sock. (More pictures on p.41)

Recommended material: Strong, medium

Colors available: All

Fastening: None

Details: None

Instructions on forming product codes, page 26.

**ADDITIONS FOR STOCKINGS,
SEE PAGE 40**



Product picture, code: PR20303F1



Product picture, code: PR2031038F1



Product picture, code: PR2031138F1

SLEEVE		Custom-made	
Model	Product / Art.No		
	Wrist-elbow	Elbow-axilla	Wrist-axilla
Adults	PR20301	PR20302	PR20303
Children	PR10301	PR10302	PR10303

Product information:

Wrist-axilla model with anatomical elbow construction.

Recommended material: Strong, medium

Colors available: All

Fastening: None

By request: Models 1 - 3

Zipper

Details: Upper edge SIL 1

Lower edge ELA 2

SLEEVE GAUNTLET		Custom-made	
Model	Thumb	Product / Art.No	
		To elbow	To axilla
Adults	Closed	PR2031019	PR2031039
Adults	Open	PR2031018	PR2031038
Children	Closed	PR1031019	PR1031039
Children	Open	PR1031018	PR1031038

Product information:

Axilla-length model with anatomical elbow construction. Anatomical construction in the thumb crotch.

Recommended material: Strong

Colors available: All

Fastening: None

By request: Models 1 - 3

Zipper

Details: Upper edge SIL 1

Lower edge ELA 2

SLEEVE GLOVE		Custom-made	
Model	Fingers	Product / Art.No	
		To elbow	To axilla
Adults	Closed	PR2031119	PR2031139
Adults	Open	PR2031118	PR2031138
Children	Closed	PR1031119	PR1031139
Children	Open	PR1031118	PR1031138

Product information:

Axilla-length model with anatomical elbow construction. Anatomical construction between the fingers and in the thumb crotch.

Recommended material: Strong

Colors available: All

Fastening: None

By request: Models 1 - 3

Zipper

Details: Upper edge SIL 1

SLEEVE FASTENING 1

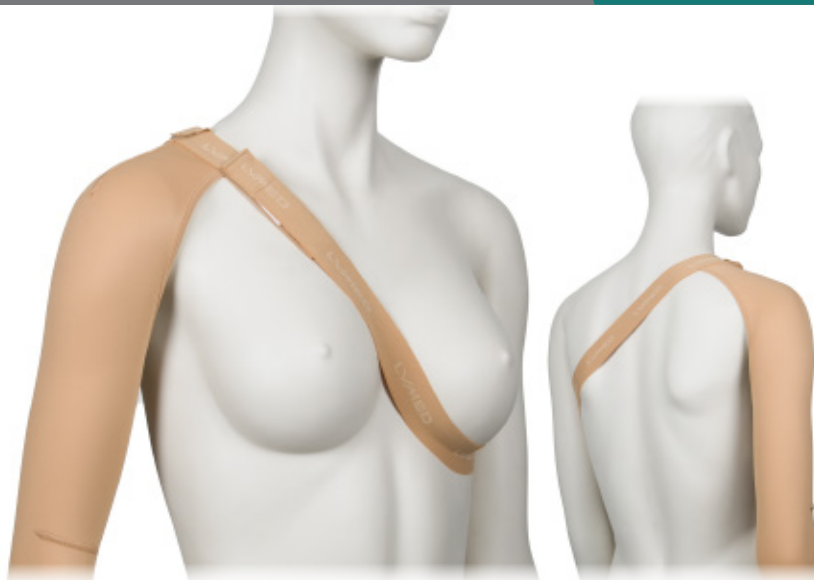
Custom-made

Model	Product / Art.No
Model 1 - Shoulder flap	
Adults	A20S1
Children	A10S1

Product information:

Elastic strap running under the breast to hold the sleeve up. Fastening with velcro. Suitable especially for users with large breasts. Available for all sleeves reaching up to axilla. Women's sleeve with a bra strap holder.

Material:	ELA 1
Color:	Same as sleeve



SLEEVE FASTENING 2

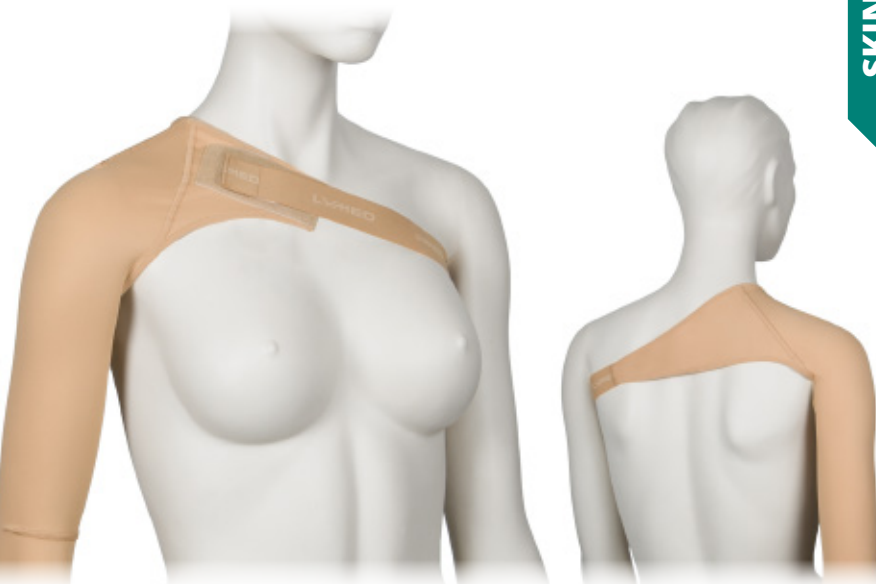
Custom-made

Model	Product / Art.No
Model 2 - Shoulder flap	
Adults	A20S2
Children	A10S2

Product information:

Elastic strap running under the axilla to hold the sleeve up. Fastening with velcro. Available for all sleeves reaching up to axilla.

Material:	ELA 1
Color:	Same as sleeve



SLEEVE FASTENING 3

Custom-made

Model	Product / Art.No
Model 3 - Opposite sleeve	
Adults	A20S3
Children	A10S3

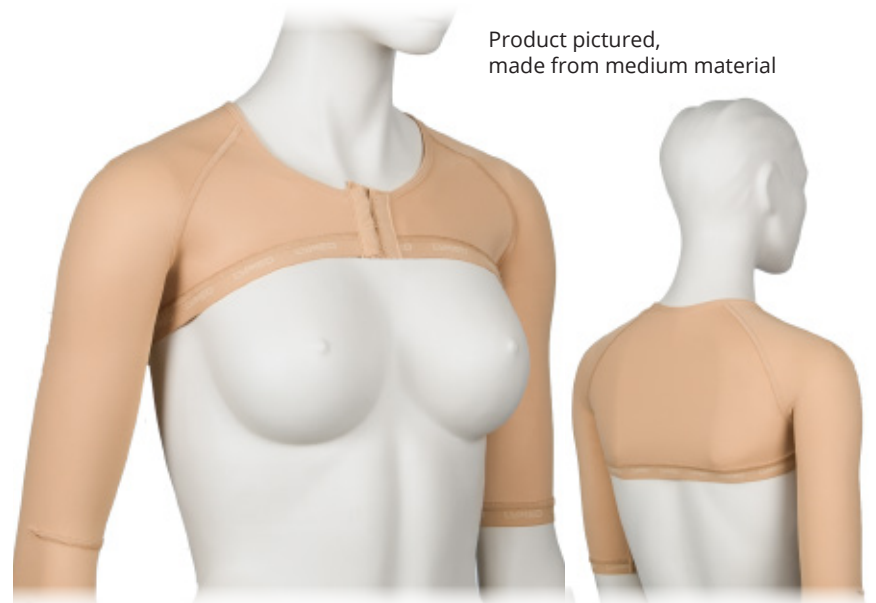
Product information:

Fastening model used to join two axilla length sleeves. It is suitable for situations where keeping the sleeve(s) in place is challenging. Opposite sleeve model can be adapted to various situations: one sleeve short, to keep a therapeutic sleeve in place or to connect two therapeutic sleeves.

Two sleeves need to be ordered with the fastening. If the ordered sleeves are made from different materials, fastening will be based on the product's lighter material by default.

Material:	Strong / medium
Color:	Same as sleeve
Fastening:	Hooks / zipper
Details:	Neckline ELA 3
	Hemline SIL 2
	Edge of sleeves ELA 2

Product pictured,
made from medium material



See also vest model on p. 58



Product picture, code:
PR203119F1 (Custom-made)
STPR31194RF1 (Standard)

Product picture, code:
PR203118F1 (Custom-made)
STPR31184RF1 (Standard)

GLOVE

Custom-made

Model	Product / Art.No	
	Fingertips closed	Fingertips open
Adults	PR203119	PR203118
Children	PR103119	PR103118

Product information:

Anatomical construction between the fingers and in the thumb crotch (picture above). Number of dorsal seams in glove may vary due to individual measurements and pressure/compression levels.
Order a sleeve-glove when the length of the shaft is greater than the length of the palm.

Recommended material:	Strong
Colors available:	All
Fastening:	None
By request:	Zipper
Details:	Wrist edging ELA 3

GLOVE

Standard size

Size	Circumf.*	Product / Art.No			
		Fingertips closed		Fingertips open	
		Right	Left	Right	Left
XXS	14 - 16	STPR31191R	STPR31191L	STPR31181R	STPR31181L
XS	17 - 18	STPR31192R	STPR31192L	STPR31182R	STPR31182L
S	19 - 20	STPR31193R	STPR31193L	STPR31183R	STPR31183L
M	21 - 22	STPR31194R	STPR31194L	STPR31184R	STPR31184L
L	23 - 24	STPR31195R	STPR31195L	STPR31185R	STPR31185L
XL	25 - 26	STPR31196R	STPR31196L	STPR31186R	STPR31186L
XXL	27 - 28	STPR31197R	STPR31197L	STPR31187R	STPR31187L

Product information:

Anatomical construction between the fingers. *Circumference at MCP

Material:	Strong
Colors:	Black, beige
Pressure level:	23 - 30 mmHg
Details:	Wrist edging ELA 3

GAUNTLET

Custom-made

Model	Product / Art.No	
	Thumb closed	Thumb open
Adults	PR203109	PR203108
Children	PR103109	PR103108

Product information:

Anatomical construction in the thumb crotch (picture above). Order a sleeve-gauntlet when the length of the shaft is greater than the length of the palm.

Recommended material:	Strong
Colors available:	All
Fastening:	None
By request:	Zipper
Details:	Wrist edging ELA 3
	Palm edging ELA 2

GAUNTLET

Standard size

Size	Circumf.*	Product / Art.No	
		Thumb open	
		Right	Left
XXS	14 - 16	STPR3101R	STPR3101L
XS	17 - 18	STPR3102R	STPR3102L
S	19 - 20	STPR3103R	STPR3103L
M	21 - 22	STPR3104R	STPR3104L
L	23 - 24	STPR3105R	STPR3105L
XL	25 - 26	STPR3106R	STPR3106L
XXL	27 - 28	STPR3107R	STPR3107L

Product information:

*Circumference at MCP

Material:	Strong
Colors:	Black, beige
Pressure level:	23 - 30 mmHg
Details:	Wrist edging ELA 3
	Palm edging ELA 2



Product picture, code:
STPR2037F2

WEB SPACER		Standard size
Model	Product / Art.No	
	One size	
Adults	STPR2037	
Children	STPR1037	

Product information:

Web spacer gives extra pressure between fingers. Product is adjustable and suitable for both hands. Intended to be worn over a pressure glove.

Material:	Elastic velcro, elastane strap
Colors:	Black, beige
Fastening:	Velcro



Product picture, code:
PR203128 (Custom-made)
STPR334F1 (Standard)

DIGITAL CAP		Custom-made
Model	Product / Art.No	
	Tip closed	Tip open
Adults	PR203129	PR203128
Children	PR103129	PR103128

Product information:

Suitable for scar management.

Recommended material:	Strong / Medium
Colors available:	All

DIGITAL CAP		Standard size	
Size	Product length cm	Circumf.* cm	Art.No Tip open
XS	5,0	4 - 5	STPR332
S	5,5	5 - 6	STPR333
M	6,5	6 - 7	STPR334
L	7,5	7 - 8	STPR335
XL	8,5	8 - 9	STPR336

Product information:

Suitable for scar management on both hand's fingers.

*Circumference around the PIP joint.

Material:	Medium
Color:	Beige
Pressure level:	23 - 30 mmHg



Product picture, code:
PR2011F1 (Custom-made)
STPR114F1 (Standard)



Product picture, code:
PR2012F1 (Custom-made)
STPR124F1 (Standard)

CHIN STRAP		Custom-made
Model	Product / Art.No	
	Ear area open	Ear area closed
Adults	PR2011	PR2012
Children	PR1011	PR1012

Product information:

Velcro fastenings on the crown of the head and back of the neck.

Recommended material:	Strong, medium
Colors available:	All
Fastening:	ELA 1 with velcro
Details:	Edging ELA 3

CHIN STRAP		Standard size
Size	Circumf.*	Product / Art.No
	cm	Ear area open Ear area closed
XXS	50 - 54	STPR111 STPR121
XS	55 - 58	STPR112 STPR122
S	59 - 62	STPR113 STPR123
M	63 - 66	STPR114 STPR124
L	67 - 70	STPR115 STPR125
XL	71 - 74	STPR116 STPR126

Product information:

Velcro fastenings on the crown of the head and back of the neck.

*Circumference from crown to chin.

Material:	Strong
Color:	Beige
Pressure level:	Adjustable
Fastening:	ELA 1 with velcro
Details:	Edging ELA 3



Product picture, code:
PR2010F1

HEADBAND		Custom-made
Model	Product / Art.No	
Adults	PR2010	
Children	PR1010	

Product information:

Velcro fastening at the back of the neck.

Recommended material:	Strong, medium
Colors available:	All
Fastening:	Velcro
Details:	Edging ELA 3



Product picture, code:
PR20138F1



Product picture, code:
PR20139F1

HELMET		Custom-made
Model	Product / Art.No	
	Face open	Face closed
Adults	PR20138	PR20139
Children	PR10138	PR10139

Instructions on forming product codes, page 26.

Product information:

Close-faced model is used to hold e.g. wound and scar care products in place. Can be used over face masks.

Openings for eyes, mouth and nose are cut when fitting the product: fit the helmet on and mark the places for openings. Remove the helmet and cut with scissors. Material does not unravel when cut.

Without request: product made with hooks.

Recommended material:	Strong / Medium
Colors available:	All
Fastening:	Hooks / zipper with guard
	From back of head to neck
Details:	Edging ELA 3



Product picture, code:
PR202F1 (Custom-made)
STPR24F1 (Standard)

PRESSURE COLLAR Custom-made

Model	Art.No
Adults	PR202
Children	PR102

Product information:

Collar with 3 mm neoprene filling.
Velcro fastening in the back of the neck.

Material:	Strong Neoprene
Colors available:	All
Pressure level:	Adjustable
Fastening:	Velcro

PRESSURE COLLAR Standard size

Size	Model	Circumf.* cm	Height (cm)		Art.No
			Front	Back	
XXS	Children	20 - 24	4,5	3,0	STPR21
XS	Children	25 - 30	4,5	3,0	STPR22
S	Adults	31 - 35	7,0	5,5	STPR23
M	Adults	36 - 40	7,5	5,5	STPR24
L	Adults	41 - 45	8,0	5,5	STPR25
XL	Adults	46 - 50	9,0	6,0	STPR26

Product information:

Collar with 3 mm neoprene filling.
Velcro fastening in the back of the neck.
*Circumference around the neck.

Material:	Strong with neoprene fill
Color:	Beige
Pressure level:	Adjustable
Fastening:	Velcro



COMPRESSION™

MEDICAL COMPRESSION GARMENTS

Custom-made

Standard size

Compression treatment is needed when the person has venous insufficiency, lymphatic edema, venous ulcers or swelling caused by injuries or operations. Swelling is caused by the intercellular accumulated fluid. The reason for this might be insufficiencies in the lymphatic system or surface veins or even tissue damage.

Compression garments support the natural lymphatic circulation of the body. Preventive measures are recommended to those with sedentary lifestyles (lots of sitting or standing), when travelling, during pregnancies and in the aftercare of operations.



Lymed Compression products are mainly custom-made with compression class determined by the person responsible for client's care.

To ensure product's safety, Lymed recommends to have a critical approach towards suitability of standard-sized products in compression treatment. According to literature, optimal benefits from pressure treatment cannot be achieved if the garment is too loose. On the other hand, too tight or an ill-fitting product may cause a negative effect. Lymed recommends that garments should be custom-made to sustain optimal compression without causing tissue damage. The fit of the product should be monitored regularly.



Product picture, code: CO21433F7



Product picture, code: CO21433F1, measured to stop under the breasts
Smaller picture: Vest with mammary cups addition (MC)

VEST				Custom-made
Model	Product / Art.No			
	Sleeveless	Short sleeves	Long and short sleeve	Long sleeves
Women	CO21411	CO21422	CO21423	CO21433
Men	CO22411	CO22422	CO22423	CO22433
Children	CO10411	CO10422	CO10423	CO10433

Separate abdominal support available for midsection:
please see product details from Lymed Skin -product group p.43

Product information:

Long-sleeved vest with anatomical elbow construction. In a product made with strong fabric, the axilla construction primarily made from medium fabric. Women's vest with anatomical breast construction. Without request: manufactured with hooks.

Recommended material:	Strong, medium
Colors available:	All
Compression level:	All available
Fastening:	Hooks / zipper with guard / none
	Hemline: SIL 1
	Neckline: ELA 3
Details:	Edge of sleeve ELA 2
	Sleeveless model: edging ELA 3

Instructions on forming product codes, page 26.



Product picture, code: CO214022F4

Product information:

Long-sleeved body with anatomical elbow construction. In products made with strong fabric, axilla construction primarily made from medium fabric. Women's body with anatomical breast construction. Basic model is shaped as high-cut brief, excluding legs.

Without request: made with hooks

Recommended material: Strong, medium

Colors available: All

Compression level: All available

Fastening: Hooks / zipper with guard at the front,
Adjustable push-buttons at the crotch
Neckline and leg opening ELA 3

Details: Edge of sleeve ELA 2
Sleeveless model: edging ELA 3

Children: Short legs: edge of leg ELA 2, crotch closure

Women: Short leg; edge of leg ELA 2, no crotch closure

BODY					Custom-made
Model	Product / Art.No				Additions
	Sleeveless	Short sleeves	Long and short sleeve	Long sleeves	Short legs
Women	CO214011	CO214022	CO214023	CO214033	COA21L
Children	CO104011	CO104022	CO104023	CO104033	COA10L



Product picture, code: CO7464F3



Product picture, code: CO7466F3

BRA		Custom-made
Model	Product / Art.No	
Two cups	CO7464	
One cup	CO7465	
Without cups	CO7466	

Instructions on forming product codes, page 26.

Product information:

A sturdy compression bra designed to reduce swelling, especially in the side and underarm areas. It has a shirt-like design with a front fastening between the breasts. The basic model has two cups. It can also be ordered as a single-cup model with one or two prosthetic pockets.

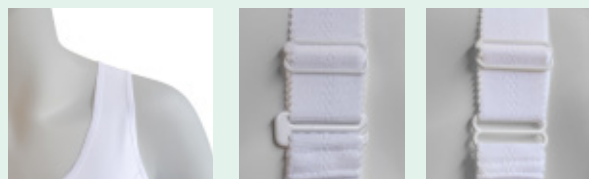
If you want a bra with a hem that extends below the waist, please order a bra top. If not specified when ordering, the product will be made with a two-row hook fastener.

Recommended material:	Strong, medium
Colors available:	All*
Fastenings:	Hooks / zipper with guard and two dressing aid hooks
Compression level:	All available
	Neckline ELA 3
Details:	Edging ELA 3
	Lower edge selectable

* 3 cm width adjustable straps available only in black or white

BRA AND BRA TOP STANDARD SELECTION

STRAPS



Fabric,
non-adjustable

Open hook,
adjustable

closed hook,
adjustable

BACK NECKLINE



High

Low

FRONT NECKLINE



Medium height

Low

ARMHOLE



High armhole

Low armhole

Product information:

A sturdy, top-like bra model designed to alleviate swelling, especially in the side and underarm areas. Fastens in the front between the breasts. The basic model has two cups. Can also be ordered as a single-cup model with one or two prosthetic pockets. If not specified when ordering, the product will be made with a two-row hook fastener.

Recommended material:	Strong, medium
Colors available:	All*
Fastenings:	Hooks / zipper with guard and three dressing aid hooks
Compression level:	All available
Details:	Neckline ELA 3
	Edging ELA 3
	Lower edge selectable



Product picture, code:
CO7474F3



Product picture, code:
CO7476F3

BRA TOP

Custom-made

Model	Product / Art.no
Two cups	CO7474
One cup	CO7475
Without cups	CO7476

* 3 cm width adjustable straps available only in black or white



Product picture, code: STCO754F3H

FASTENING OPTIONS

Product code

Hooks	Zipper
H	Z

COMPRESSION BRA

Standard size

Size	Circumf.*	Product / Art.No						
	cm	Two cups	Without cups	Cup on the right	Cup on the left	Prosthesis pocket, both	Prosthesis pocket, right	Prosthesis pocket, left
XS	68 - 76	STCO752	STCO762	STCO762R	STCO762L	STCO752PP	STCO752PR	STCO752PL
S	76 - 84	STCO753	STCO763	STCO763R	STCO763L	STCO753PP	STCO753PR	STCO753PL
M	84 - 89	STCO754	STCO764	STCO764R	STCO764L	STCO754PP	STCO754PR	STCO754PL
L	89 - 94	STCO755	STCO765	STCO765R	STCO765L	STCO755PP	STCO755PR	STCO755PL
XL	94 - 104	STCO756	STCO766	STCO766R	STCO766L	STCO756PP	STCO756PR	STCO756PL
XXL	104 - 114	STCO757	STCO767	STCO767R	STCO767L	STCO757PP	STCO757PR	STCO757PL
XXXL	114 - 127	STCO758	STCO768	STCO768R	STCO768L	STCO758PP	STCO758PR	STCO758PL
Non-stock products								

Product information:

A very sturdy compression bra, meant to remove swelling from the sides and the underarm area. A full coverage model with hook fasteners between the breasts. Basic model with two cups. Available with either of the cups, cupless or with pockets for prosthesis (both or either side).

*Circumference at the chest below the breasts.

Material:	Strong
	Pocket for prosthesis: Medium
Stock colors in basic models:	Black, white
Colors by request in other models:	Black, white
Compression level:	Ccl II
Fastening:	Hooks / zipper with guard
Details:	Hemline ELA 1
	Edging ELA 3



Product picture, code:
CO22533F1

Product information:

Long legs with anatomical construction at the knee. Stockings with anatomical construction at the ankle. Constructions made from medium material when leg with stocking is ordered with strong material, in compression classes 1-2. Men's models with contouring at the front.

Recommended material:	Strong, medium
Colors available:	All
Compression level:	All available
Details:	Waist ELA 1
	Leg opening ELA 2

PANTS

Custom-made

Model Product / Art.No

	Short legs	Short and long leg	Short leg and leg with stocking OPEN / CLOSED	Long legs	Long leg and leg with stocking OPEN / CLOSED	Short leg and leg with foot glove, toes OPEN / CLOSED	Long leg and leg with foot glove, toes OPEN / CLOSED
Women	CO21522	CO21523	CO21524 8/9	CO21533	CO21534 8/9	CO21524FG 8/9	CO21534FG 8/9
Men	CO22522	CO22523	CO22524 8/9	CO22533	CO22534 8/9	CO22524FG 8/9	CO22534FG 8/9
Girls	CO11522	CO11523	CO11524 8/9	CO11533	CO11534 8/9	CO11524FG 8/9	CO11534FG 8/9
Boys	CO12522	CO12523	CO12524 8/9	CO12533	CO12534 8/9	CO12524FG 8/9	CO12534FG 8/9

STOCKINGS

Custom-made

Model Product / Art.No

	Stockings, tips open	Stockings, tips closed	Stockings, one leg with foot glove, toes open	Stockings, one leg with foot glove, toes closed	Stockings with foot gloves, toes open	Stockings with foot gloves, toes closed
Women	CO215448	CO215449	CO21544FG8	CO21544FG9	CO21544FG28	CO21544FG29
Men	CO225448	CO225449	CO22544FG8	CO22544FG9	CO22544FG28	CO22544FG29
Girls	CO115448	CO115449	CO11544FG8	CO11544FG9	CO11544FG28	CO11544FG29
Boys	CO125448	CO125449	CO12544FG8	CO12544FG9	CO12544FG28	CO12544FG29



Product picture, code:
STCO21514F1



Product picture, code:
STCO21514HWF1



Product picture, code:
STCO21514FNSF1 ABS

Normal waist
with add-on flap (FNS),
shoulder straps

COMPRESSION PANTS FOR WOMEN | NORMAL WAIST

Standard size

Model	Circumf.*		Product / Art.No		
	Pelvis (cm)	Thigh (cm)	Knee length	Calf length	Ankle length
XS	86 - 90	50,0 - 52,5	STCO21512	STCO21522	STCO21532
S	91 - 95	53,0 - 56,0	STCO21513	STCO21523	STCO21533
M	96 - 101	56,5 - 59,0	STCO21514	STCO21524	STCO21534
L	102 - 110	59,5 - 62,0	STCO21515	STCO21525	STCO21535
XL	111 - 121	62,5 - 65,0	STCO21516	STCO21526	STCO21536
XXL	122 - 132	65,5 - 68,0	STCO21517	STCO21527	STCO21537
XXXL	133 - 138	68,5 - 71,5	STCO21518	STCO21528	STCO21538
XXXXL	139 - 144	72,0 - 74,5	STCO21519	STCO21529	STCO21539

COMPRESSION PANTS FOR WOMEN | HIGH WAIST

Standard size

Model	Circumf.*		Product / Art.No		
	Pelvis (cm)	Thigh (cm)	Knee length	Calf length	Ankle length
XS	86 - 90	50,0 - 52,5	STCO21512HW	STCO21522HW	STCO21532HW
S	91 - 95	53,0 - 56,0	STCO21513HW	STCO21523HW	STCO21533HW
M	96 - 101	56,5 - 59,0	STCO21514HW	STCO21524HW	STCO21534HW
L	102 - 110	59,5 - 62,0	STCO21515HW	STCO21525HW	STCO21535HW
XL	111 - 121	62,5 - 65,0	STCO21516HW	STCO21526HW	STCO21536HW
XXL	122 - 132	65,5 - 68,0	STCO21517HW	STCO21527HW	STCO21537HW
XXXL	133 - 138	68,5 - 71,5	STCO21518HW	STCO21528HW	STCO21538HW
XXXXL	139 - 144	72,0 - 74,5	STCO21519HW	STCO21529HW	STCO21539HW

Product information:

Compression pants for lower limb edema. Basic models without genital compression. Other models (FS, FNS, NI) available for treating genital edema.

Recommended add-on: shoulder straps.

*Circumference at widest point of pelvis and upper thigh.

ADDED COMPRESSION FOR GENITAL EDEMA

Product / Art.No

Fabric flap, velcro adjustment	Flap with neoprene reinforcement, velcro adjustment	Integrated centerpiece with neoprene reinforcement
FS	FNS	NI

Instructions on forming product codes, page 26.

ADDED COMPRESSION FOR GENITAL EDEMA

Product / Art.No

Integrated centerpiece with neoprene reinforcement
NI

Material:	Strong
Stock color in basic models:	Black
Color by request in basic models:	Beige
Colors by request in other models:	Black, beige
Compression level:	Ccl II
Details:	Waist SIL 1, Leg opening ELA 2



Product picture, code: STCO22534F1



Product picture, code: STCO22534FSF1 ABS

COMPRESSION PANTS FOR MEN | NORMAL WAIST

Standard size

Model	Circumf.*		Product / Art.No		
	Pelvis (cm)	Thigh (cm)	Knee length	Calf length	Ankle length
XS	84 - 89	55,0 - 57,5	STCO22512	STCO22522	STCO22532
S	90 - 95	58,0 - 60,5	STCO22513	STCO22523	STCO22533
M	96 - 101	61,0 - 63,5	STCO22514	STCO22524	STCO22534
L	102 - 107	64,0 - 66,5	STCO22515	STCO22525	STCO22535
XL	108 - 114	67,0 - 69,5	STCO22516	STCO22526	STCO22536
XXL	115 - 121	70,0 - 72,5	STCO22517	STCO22527	STCO22537

ADDED COMPRESSION FOR GENITAL EDEMA

Product / Art.No

Fabric flap, velcro fastening

FS

Instructions on forming product codes, page 26.

Product information:

Compression pants for lower limb edema. Basic model without genital compression. Contouring in the front.

Model with added compression flap is designed for genital edema: Genitals are placed through the opening in the front of the pants to the pouch. Opening can be cut with scissors to a suitable size. Fit of the flap can be adjusted with velcro fastening. Model with flap gives a little more pressure to the groin area, the flap covers and supports the genitals

Recommended add-on: shoulder straps.

*Circumference at widest point of pelvis and upper thigh.

Material:	Strong
Stock color in basic models:	Black
Color by request in basic models:	Beige
Colors by request in other models:	Black, beige
Compression level:	Ccl II
Details:	Waist SIL 1, Leg opening ELA 2



Product picture, code: STCO22504F2

SUSPENSOR

Standard size

Size	Estim.volume dl	Height cm	Length cm	Art.No
S	6	18	120	STCO22503
M	8	18	120	STCO22504
L	12	18	120	STCO22505
XL	14	18	120	STCO22506

Product information:

Suspensor for men's genital area edema.
Adjustable Velcro fastening and straps.

Material:	Polyamide elastane knit, support band with velcro
Color:	Black
Pressure level:	Adjustable
Fastening:	Velcro fastening
Details:	Front edging: ELA 3 Straps: velcro straps

PENIS TUBE

Custom-made

Model	Tip	Art.No
Adults	Closed	CO22809
Adults	Open	CO22808
Children	Closed	CO12809
Children	Open	CO12808

Product information:

Anatomical construction in the base of the tube. We recommend velcro fastening for easier donning.

If the circumference of penis is over 20 cm, the product will be priced on a case-by-case basis.

Recommended material:	Strong, Medium
Available colors:	All
Fastening:	No fastening
Can be ordered:	Velcro fastening*
Compression level:	All available

* Fastening color: white, black or beige, which is chosen by our production.



Product picture, code: CO22808F1

Instructions on forming product codes, page 26.

Tip! Can be used together with maternity support belt and bras



Product picture, code: STCOM21534F2

MATERNITY PANTS					Standard size
Size	Circumf.*	Product / Art.No			
	Pelvis (cm)	Thigh (cm)	Knee length	Calf length	Ankle length
XS	86 - 90	50,0 - 52,5	STCOM21512	STCOM21522	STCOM21532
S	91 - 95	53,0 - 56,0	STCOM21513	STCOM21523	STCOM21533
M	96 - 101	56,5 - 59,0	STCOM21514	STCOM21524	STCOM21534
L	102 - 110	59,5 - 62,0	STCOM21515	STCOM21525	STCOM21535
XL	111 - 121	62,5 - 65,0	STCOM21516	STCOM21526	STCOM21536
XXL	122 - 132	65,5 - 68,0	STCOM21517	STCOM21527	STCOM21537
XXXL	133 - 138	68,5 - 71,5	STCOM21518	STCOM21528	STCOM21538

Product information:

Maternity compression pants with room for a growing belly. Pants can be used for treatment of edema in lower limbs. Fits most bellies during second trimester, even through the third trimester.

Material:	Strong
	Stomach: Light
Colors by request:	Black, beige
Compression level:	Ccl II
	Midsection: light compression
Details:	Waist SIL 1
	Leg opening ELA 2



Product picture, code: CO20603F6



Product picture, code: CO20603F1

LEG				Custom-made
Model	Product / Art.No			Additions
	Ankle-knee	Knee-thigh	Ankle-thigh	Waist strap
Adults	CO20601	CO20602	CO20603	A20B
Children	CO10601	CO10602	CO10603	A10B

Product information:

Ankle-thigh model with anatomical knee construction. Constructions made from medium material, when product is manufactured from strong material. Constructions made from strong material in classes III and above.

Recommended material:	Strong, medium
Colors available:	All
Fastening:	None
By request:	Zipper / hooks / waist strap for thigh-high model: ELA 4
	Strap always in the same color as fabric.
Compression level:	All available
Details:	Upper edge SIL 4, upper edge in knee-high SIL 1, Lower edge ELA 2

Instructions on forming product codes, page 26.



Product picture, code:
CO20639F4 A20B



Product picture, code:
CO20629F4 AZ



Product picture, code:
CO20619F4



Product picture, code:
COA20T9F2

STOCKING

Custom-made

Model	Toes	Product / Art.No			Additions
		Ankle-high	Knee-high	Thigh-high	Waist strap
Adults	Closed	CO20619	CO20629	CO20639	A20B
Adults	Open	CO20618	CO20628	CO20638	A20B
Adults	Toe sock, closed	CO20619FG	CO20629FG	CO20639FG	A20B
Adults	Toe sock, open	CO20618FG	CO20628FG	CO20638FG	A20B
Children	Closed	CO10619	CO10629	CO10639	A10B
Children	Open	CO10618	CO10628	CO10638	A10B
Children	Toe sock, closed	CO10619FG	CO10629FG	CO10639FG	A10B
Children	Toe sock, open	CO10618FG	CO10628FG	CO10638FG	A10B

Product information:

Anatomical knee and ankle constructions. The tip of the open-toe sock is slightly angled. Constructions made from medium material, when product is manufactured from the strong material. Constructions made from strong material in classes III and above. Order a knee-high stocking when the length of the shaft is greater than the ankle-floor length measurement (L67/R67).

Recommended material:	Strong, medium
Colors available:	All
Fastening:	None
By request:	Zipper / hooks / Waist strap for thigh-high model: ELA 4 Strap always in the same color as fabric.
Compression level:	All available
Details:	Upper edge SIL 1, upper edge in thigh-high SIL 4, lower edge, tip open ELA 2.

FOOT GLOVE

Custom-made

Model	Toe tips	Art.No
Adults	Closed	COA20T9
Adults	Open	COA20T8
Children	Closed	COA10T9
Children	Open	COA10T8

Product information:

For the treatment of foot or toes. Can be used by itself or e.g. with an open toe sock.
(More pictures on p. 41)

Recommended material:	Strong, medium
Colors available:	All
Fastening:	None
Compression level:	All available
Details:	None

Instructions on forming product codes, page 26.

**ADDITIONS FOR STOCKINGS,
SEE PAGE 40**



Product picture, code: CO20303F1



Product picture, code: CO2031038F1



Product picture, code: CO2031138F1

SLEEVE		Custom-made	
Model	Product / Art.No		
	Wrist-elbow	Elbow-axilla	Wrist-axilla
Adults	CO20301	CO20302	CO20303
Children	CO10301	CO10302	CO10303

Product information:

Wrist-axilla model with anatomical elbow construction.

Recommended material:	Strong, medium
Colors available:	All
Fastening:	None
By request:	Models 1-3 Zipper
Compression level:	All available
Details:	Upper edge SIL 1 Lower edge ELA 2

SLEEVE GAUNTLET		Custom-made	
Model	Thumb	Product / Art.No	
		To elbow	To axilla
Adults	Closed	CO2031019	CO2031039
Adults	Open	CO2031018	CO2031038
Children	Closed	CO1031019	CO1031039
Children	Open	CO1031018	CO1031038

Product information:

Axilla-length model with anatomical elbow construction. Anatomical construction in the thumb crotch.

Recommended material:	Strong
Colors available:	All
Fastening:	None
By request:	Models 1-3 Zipper
Compression level:	All available
Details:	Upper edge SIL 1 Lower edge ELA 2

SLEEVE GLOVE		Custom-made	
Model	Fingers	Product / Art.No	
		To elbow	To axilla
Adults	Closed	CO2031119	CO2031139
Adults	Open	CO2031118	CO2031138
Children	Closed	CO1031119	CO1031139
Children	Open	CO1031118	CO1031138

Product information:

Axilla-length model with anatomical elbow construction. Anatomical construction between the fingers and in the thumb crotch.

Recommended material:	Strong
Colors available:	All
Fastening:	None
By request:	Models 1-3 Zipper
Compression level:	All available
Details:	Upper edge SIL 1

SLEEVE FASTENING 1

Custom-made

Model	Product / Art.No
	Model 1 Shoulder flap
Adults	A20S1
Children	A10S1

Product information:

Elastic strap running under the breast to hold the sleeve up. Fastening with velcro. Suitable especially for users with large breasts. Available for all sleeves reaching up to axilla. Women's sleeve with a bra strap holder.

Material:	ELA 1
Color:	Same as sleeve



SLEEVE FASTENING 2

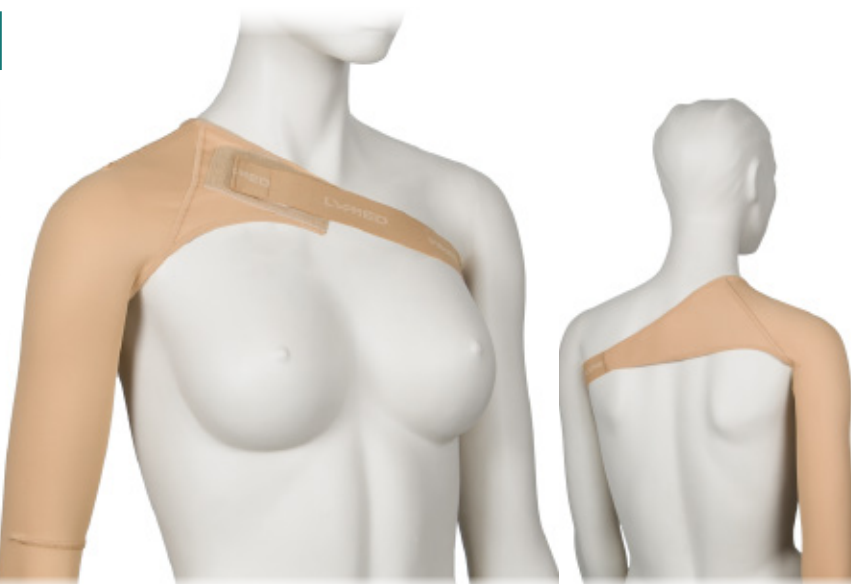
Custom-made

Model	Product / Art.No
	Model 2 Shoulder flap
Adults	A20S2
Children	A10S2

Product information:

Elastic strap running under the axilla to hold the sleeve up. Fastening with velcro. Available for all sleeves reaching up to axilla.

Material:	ELA 1
Color:	Same as sleeve



SLEEVE FASTENING 3

Custom-made

Model	Product / Art.No
	Model 3 Opposite sleeve
Adults	A20S3
Children	A10S3

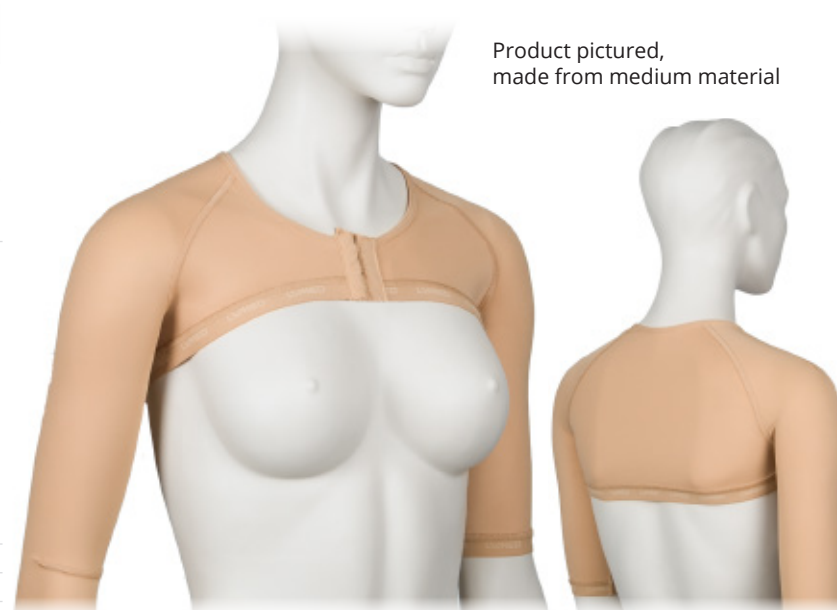
Product information:

Fastening model used to join two axilla length sleeves. It is suitable for situations where keeping the sleeve(s) in place is challenging. Opposite sleeve model can be adapted to various situations: one sleeve short, to keep a therapeutic sleeve in place or to connect two therapeutic sleeves.

Two sleeves need to be ordered with the fastening. If the ordered sleeves are made from different materials, fastening will be based on the product's lighter material by default.

Material:	Strong / medium
Color:	Same as sleeve
Fastening:	Hooks / zipper
Details:	Neckline ELA 3
	Hemline SIL 2
	Edge of sleeves ELA 2

Product pictured,
made from medium material



See also vest model on p. 58



Product picture, code:
CO203119F1 (Custom-made)
STCOPR31194RF1 (Standard)

Product picture, code:
CO203118F1 (Custom-made)
STCO31184RF1 (Standard)



Product picture, code:
CO203108F1 (Custom-made)
STCO3104RF1 (Standard)

GLOVE

Custom-made

Model	Product / Art.No	
	Fingertips closed	Fingertips open
Adults	CO203119	CO203118
Children	CO103119	CO103118

Product information:

Anatomical construction between the fingers and in the thumb crotch.
Number of dorsal seams in glove may vary due to individual measurements and pressure/compression levels.
Order a sleeve-glove when the length of the shaft is greater than the length of the palm.

Recommended material:	Strong
Colors available:	All
Fastening:	None
By request:	Zipper
Compression level:	All available
Details:	Wrist edging ELA 3

GLOVE

Standard size

Size	Circumf.*	Product / Art.No			
	cm	Fingertips closed		Fingertips open	
		Right	Left	Right	Left
XXS	14 - 16	STCO31191R	STCO31191L	STCO31181R	STCO31181L
XS	17 - 18	STCO31192R	STCO31192L	STCO31182R	STCO31182L
S	19 - 20	STCO31193R	STCO31193L	STCO31183R	STCO31183L
M	21 - 22	STCO31194R	STCO31194L	STCO31184R	STCO31184L
L	23 - 24	STCO31195R	STCO31195L	STCO31185R	STCO31185L
XL	25 - 26	STCO31196R	STCO31196L	STCO31186R	STCO31186L
XXL	27 - 28	STCO31197R	STCO31197L	STCO31187R	STCO31187L

Product information:

Anatomical construction between the fingers.
*Circumference at MCP.

Material:	Strong
Colors:	Black, beige
Compression level:	Ccl II
Details:	Wrist edging ELA 3

GAUNTLET

Custom-made

Model	Product / Art.No	
	Thumb closed	Thumb open
Adults	CO203109	CO203108
Children	CO103109	CO103108

Product information:

Anatomical construction in the thumb crotch (pictured above). Order a sleeve-gauntlet when the length of the shaft is greater than the length of the palm.

Recommended material:	Strong
Colors available:	All
Fastening:	None
By request:	Zipper
Compression level:	All available
Details:	Wrist edging ELA 3 Palm edging ELA 2

GAUNTLET

Standard size

Size	Circumf.*	Product / Art.No	
	cm	Thumb open	
		Right	Left
XXS	14 - 16	STCO3101R	STCO3101L
XS	17 - 18	STCO3102R	STCO3102L
S	19 - 20	STCO3103R	STCO3103L
M	21 - 22	STCO3104R	STCO3104L
L	23 - 24	STCO3105R	STCO3105L
XL	25 - 26	STCO3106R	STCO3106L
XXL	27 - 28	STCO3107R	STCO3107L

Product information:

Thumb tip open.

*Circumference at MCP.

Material:	Strong
Colors:	Black, beige
Compression level:	Ccl II
Details:	Wrist edging ELA 3 Palm edging ELA 2



Product picture, code:
CO2011F1

Product picture, code:
CO2012F1

CHIN STRAP

Custom-made

Model	Product / Art.No	
	Ear area open	Ear area closed
Adults	CO2011	CO2012
Children	CO1011	CO1012

Product information:

Velcro fastenings on the crown of the head and back of the neck.

Recommended material: Strong, medium

Colors available: All

Fastening: ELA 1 with velcro

Compression level: All available

Details: Edging: ELA 3

Instructions on forming product codes, page 26.



Product picture, code:
CO20138F1

Product picture, code:
CO20139F1

HELMET

Custom-made

Model	Product / Art.No	
	Face open	Face closed
Adults	CO20138	CO20139
Children	CO10138	CO10139

Product information:

Close-faced model is used to hold e.g. care products in place. Can be used over face masks.

Openings for eyes, mouth and nose are cut when fitting the product: fit the helmet on and mark the places for openings. Remove the helmet and cut with scissors. Material does not unravel when cut. Without request: made with hooks.

Recommended material: Strong, medium

Colors available: All

Fastening: Hooks / zipper with guard
From back of head to neck

Compression level: All available

Details: Edging ELA 3



SENSE™

NEUROLOGICAL PRESSURE GARMENTS

Custom-made

Standard size



Lymed Sense garments are used in occupational and neurological physiotherapy to enhance proprioception of the body, body awareness and deep pressure input. Pressure garments are used, for example, in management of cerebral palsy (CP), autism, hypotonia, Erb's or serratus anterior palsy or other neurological conditions. Lymed Sense garments are also used to manage different types of pain disorders (e.g. CRPS).

Lymed Sense garments can be fully customized to meet the goals of client's treatment and to support client's everyday activities. Zippers, velcros, straps and splint or neoprene pockets are examples of additions which can be used to add comfort and functionality of the product.

To ensure product's safety, Lymed recommends to have a critical approach towards suitability of standard-sized products in client's treatment. According to literature, optimal benefits from pressure treatment cannot be achieved if the garment is too loose. On the other hand, too tight or an ill-fitting product may cause a negative effect. Lymed recommends that garments should be custom-made to sustain optimal pressure without causing tissue damage. The fit of the product should be monitored regularly.



Product picture, code:
SEE10422F5



SCAPULA SUPPORT VEST					Custom-made
Model	Product / Art.No			Addition	
	Long sleeves	Long and short sleeve	Short sleeves	Double scapula supp.	
Women	SEE21433	SEE21423	SEE21422	SEE2	
Men	SEE22433	SEE22423	SEE22422	SEE2	
Children	SEE10433	SEE10423	SEE10422	SEE2	

Product information:

Can be used in treatment of Erb's palsy or Serratus anterior palsy. Straps constructed from elastane band. Adjustable and elastic strap and neoprene lining on shoulder area. Also available with double-sided support for both shoulder blades. Long-sleeved vest with anatomical elbow constructions. Axilla constructions made primarily from light material. Women's vest with anatomical breast construction. Without request: made with hooks.

Recommended material:	Strong, medium
Colors available:	All
Fastening:	Hooks / Zipper fastening with guard Hemline SIL 1
Details:	Neckline ELA 3 Edge of sleeve ELA 2

SCAPULA SUPPORT BODY						Custom-made
Model	Product / Art.No			Addition		Addition
	Long sleeves	Long and short sleeve	Short sleeves	Short legs	Double scapula supp.	
Children	SEE104033	SEE104023	SEE104022	SEA10L	SEE2	

Instructions on forming product codes, page 26.

Product information:

Can be used in treatment of Erb's palsy or Serratus anterior palsy. Straps constructed from elastane band. Adjustable and elastic strap and neoprene lining on shoulder area. Also available with double-sided support for both shoulder blades and short legs. Adjustable push-buttons at the crotch. Long-sleeved vest with anatomical elbow construction. Axilla construction made primarily from light material. Without request: made with hooks.

Recommended material:	Strong, medium
Colors available:	All
Fastening:	Hooks at the front / Zipper fastening with guard Push-buttons at the crotch
Details:	Neckline and leg opening ELA 3 Edge of sleeve ELA 2 Sleeveless model: edging ELA 3 Short legs: ELA 2, crotch fastening



Product picture, code: SE21422F1 AZ

VEST			Custom-made	
Model	Product / Art.No			
	Sleeveless	Short sleeves	Long and short sleeve	Long sleeves
Women	SE21411	SE21422	SE21423	SE21433
Men	SE22411	SE22422	SE22423	SE22433
Children	SE10411	SE10422	SE10423	SE10433

Instructions on forming product codes, page 26.

Product information:

Long-sleeved vest with anatomical elbow construction. Axilla construction primarily from light material, if vest made from strong material.

Women's vest with anatomical breast construction.

Without request: manufactured with hooks.

Recommended material:	Strong, medium
Colors available:	All
Fastening:	None / hooks / zipper with guard
Details:	Hemline SIL 1
	Neckline ELA 3
	Edge of sleeve ELA 2
	Sleeveless model: edging ELA 3

Separate abdominal support available for midsection:
please see product details from Lymed Skin -product group p. 43



Product picture, code:
SE1045333F6

OVERALL

Custom-made

Model

Product / Art.No

Long sleeves and legs

Children

SE1045333

Product information:

Overall with anatomical elbow and knee constructions. Axilla construction primarily from light material, if overall made from strong material. Without request: manufactured with hooks.

Recommended material: Strong, medium

Colors available: All

Fastening: Hooks / zipper with guard

Neckline ELA 3

Details: Leg opening ELA 2

Edge of sleeve ELA 2

Instructions on forming product codes, page 26.



Product picture, code:
SE104011F5 SEA10L

BODY					Custom-made
Model	Product / Art.No				Additions
	Sleeveless	Short sleeves	Long and short sleeve	Long sleeves	Short legs
Women	SE214011	SE214022	SE214023	SE214033	SEA21L
Children	SE104011	SE104022	SE104023	SE104033	SEA10L

Instructions on forming product codes, page 26.

Product information:

Long-sleeved body with anatomical elbow construction. Axilla construction primarily from light material, when body made with strong material. Adjustable push-buttons at the crotch. Basic model is shaped as high-cut brief, excluding legs. Women's body with anatomical breast construction.

Recommended material:	Strong, medium
Colors available:	All
Fastening:	Hooks at the front / Zipper fastening with guard push-buttons at the crotch
Details:	Neckline and leg opening ELA 3
	Edge of sleeve ELA 2
	Sleeveless model: edging ELA 3
	Children: Short legs: edge of leg ELA 2, crotch closure
	Women: Short leg: edge of leg ELA 2, no crotch closure



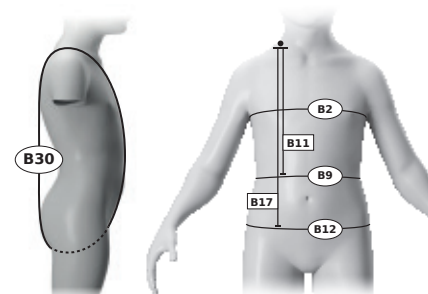
Product picture, code:
STSE404F7

ADJUSTABLE BODY	
Size	Art.No
Short sleeves	
1	STSE401
2	STSE402
3	STSE403
4	STSE404
5	STSE405
6	STSE406
7	STSE407

Product information:

Adjustable body can be used in occupational and neurological physiotherapy. Different parts of the body can be activated by adjusting the Velcro straps. Adjustable push-buttons at the crotch. Medium material at the midsection and axilla for added comfort.

Material:	Strong and medium
Stock color:	Beige
Colors by request:	Black, white, grey, blue, red, green
Fastening:	Velcro at the back, push-buttons at the crotch
Pressure level:	Adjustable
Details:	Neckline and leg opening ELA 3
	Edge of sleeve ELA 2



Sizes	Measurements (cm)					
	B30	B11	B17	B2	B9	B12
1	80 - 86	24	30	43	40	42
2	84 - 90	25	31	47	43	45
3	88 - 96	26	33	51	46	48
4	94 - 102	27	35	55	49	52
5	100 - 108	28,5	37	59	52	56
6	107 - 115	30	39	63	55	60
7	114 - 122	31,5	41	67	58	64



Product picture, code:
SE22522F4

Product information:

Anatomical construction at the knee and ankle. Constructions from medium material when product is manufactured from strong material. Men's models with contouring at the front.

Recommended material:	Strong, medium
Colors available:	All
Details:	Waist ELA 1
	Leg opening ELA 2

PANTS

Custom-made

Model	Product / Art.No						
	Short legs	Short and long leg	Short leg and leg with stocking OPEN / CLOSED	Long legs	Long leg and leg with stocking OPEN / CLOSED	Short leg and leg with foot glove, toes OPEN / CLOSED	Long leg and leg with foot glove, toes OPEN / CLOSED
Women	SE21522	SE21523	SE21524 8/9	SE21533	SE21534 8/9	SE21524FG 8/9	SE21534FG 8/9
Men	SE22522	SE22523	SE22524 8/9	SE22533	SE22534 8/9	SE22524FG 8/9	SE22534FG 8/9
Girls	SE11522	SE11523	SE11524 8/9	SE11533	SE11534 8/9	SE11524FG 8/9	SE11534FG 8/9
Boys	SE12522	SE12523	SE12524 8/9	SE12533	SE12534 8/9	SE12524FG 8/9	SE12534FG 8/9

STOCKINGS

Custom-made

Model	Product / Art.No					
	Stockings, tips open	Stockings, tips closed	Stockings, one leg with foot glove, toes open	Stockings, one leg with foot glove, toes closed	Stockings with foot gloves, toes open	Stockings with foot gloves, toes closed
Women	SE215448	SE215449	SE21544FG8	SE21544FG9	SE21544FG28	SE21544FG29
Men	SE225448	SE225449	SE22544FG8	SE22544FG9	SE22544FG28	SE22544FG29
Girls	SE115448	SE115449	SE11544FG8	SE11544FG9	SE11544FG28	SE11544FG29
Boys	SE125448	SE125449	SE12544FG8	SE12544FG9	SE12544FG28	SE12544FG29



Product picture, code:
SE20603F1



Product picture, code:
SE10639F5



Product picture, code:
SE10629F6

LEG		Custom-made		
Model	Product / Art.No		Additions	
	Ankle-knee	Knee-thigh	Ankle-thigh	Waist strap
Adults	SE20601	SE20602	SE20603	A20B
Children	SE10601	SE10602	SE10603	A10B

Product information:

Ankle-thigh model with anatomical knee construction. Constructions made from medium material, when product is manufactured from strong material.

Recommended material:	Strong, medium
Colors available:	All
Fastening:	None / hooks / zipper
By request:	Hooks / zipper / waist strap for thigh-high ELA 4 Strap always in the same color as fabric.
Details:	Knee-high: upper edge SIL 1 Upper edge SIL 4, upper edge in knee-high SIL 1, lower edge ELA 2.

ADDITIONS FOR STOCKINGS,
SEE PAGE 40

STOCKING		Custom-made			
Model	Toes	Product / Art.No		Additions	
		Ankle-high	Knee-high	Thigh-high	Waist strap
Adults	Closed	SE20619	SE20629	SE20639	A20B
Adults	Open	SE20618	SE20628	SE20638	A20B
Adults	Toe sock, closed	SE20619FG	SE20629FG	SE20639FG	A20B
Adults	Toe sock, open	SE20618FG	SE20628FG	SE20638FG	A20B
Children	Closed	SE10619	SE10629	SE10639	A10B
Children	Open	SE10618	SE10628	SE10638	A10B
Children	Toe sock, closed	SE10619FG	SE10629FG	SE10639FG	A10B
Children	Toe sock, open	SE10618FG	SE10628FG	SE10638FG	A10B

Product information:

Anatomical knee and ankle constructions. The tip of the open-toe sock is slightly angled. Constructions made from medium material, when product is manufactured from strong material. Order a knee-high stocking when the length of the shaft is greater than the ankle-floor length measurement (L67/R67).

Recommended material:	Strong, medium
Colors available:	All
Fastening:	None
By request:	Hooks / zipper / waist strap for thigh-high model ELA 4 Strap always in the same color as fabric.
Details:	Upper edge SIL 1, upper-edge in thigh-high SIL 4, lower edge, tip open ELA 2.



Product picture, code: SE20303F1



Product picture, code: SE2031038F1



Product picture, code: SE2031138F1

SLEEVE

Custom-made

Model	Product / Art.No		
	Wrist-elbow	Elbow-axilla	Wrist-axilla
Adults	SE20301	SE20302	SE20303
Children	SE10301	SE10302	SE10303

Product information:

Wrist-axilla model with anatomical elbow construction.

Recommended material:	Strong, medium
Colors available:	All
Fastening:	None / models 1-3
By request:	Models 1 - 3 Zipper
Details:	Upper edge SIL 1 Lower edge ELA 2

Instructions on forming product codes, page 26.

SLEEVE GAUNTLET

Custom-made

Model	Thumb	Product / Art.No	
		To elbow	To axilla
Adults	Closed	SE2031019	SE2031039
Adults	Open	SE2031018	SE2031038
Children	Closed	SE1031019	SE1031039
Children	Open	SE1031018	SE1031038

Product information:

Axilla-length model with anatomical elbow construction. Anatomical construction in the thumb crotch.

Recommended material:	Strong, medium
Colors available:	All
Fastening:	None / models 1-3
By request:	Models 1 - 3 Zipper
Details:	Upper edge SIL 1 Lower edge ELA 2

SLEEVE GLOVE

Custom-made

Model	Fingers	Product / Art.No	
		To elbow	To axilla
Adults	Closed	SE2031119	SE2031139
Adults	Open	SE2031118	SE2031138
Children	Closed	SE1031119	SE1031139
Children	Open	SE1031118	SE1031138

Product information:

Axilla-length model with anatomical elbow construction. Anatomical construction between the fingers and in the thumb crotch.

Recommended material:	Strong, medium
Colors available:	All
Fastening:	None / models 1-3
By request:	Models 1 - 3 Zipper
Details:	Upper edge SIL 1

SLEEVE FASTENING 1

Custom-made

Model

Product / Art.No

Model 1 - Shoulder flap

Adults

A20S1

Children

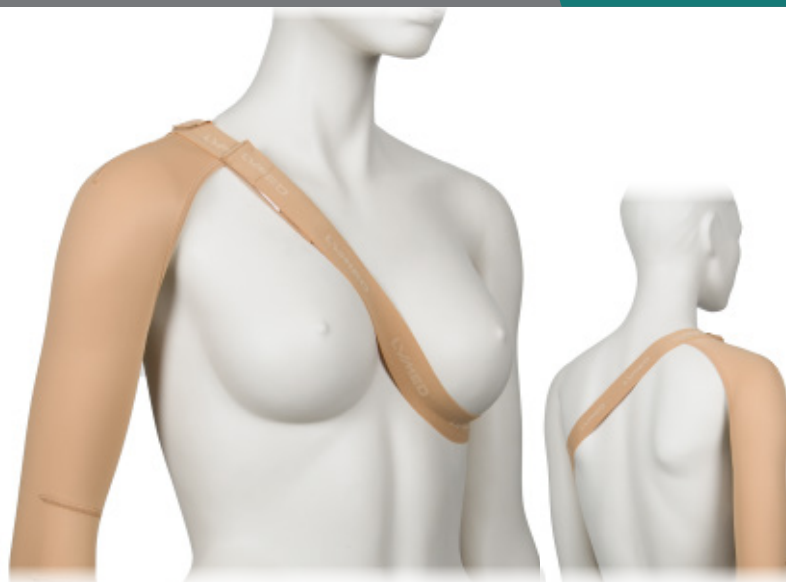
A10S1

Product information:

Elastic strap running under the breast to hold the sleeve up. Fastening with velcro. Suitable especially for users with large breasts. Available for all sleeves reaching up to axilla. Women's sleeve with a bra strap holder.

Material: ELA 1

Color: Same as sleeve



SLEEVE FASTENING 2

Custom-made

Model

Product / Art.No

Model 2 - Shoulder flap

Adults

A20S2

Children

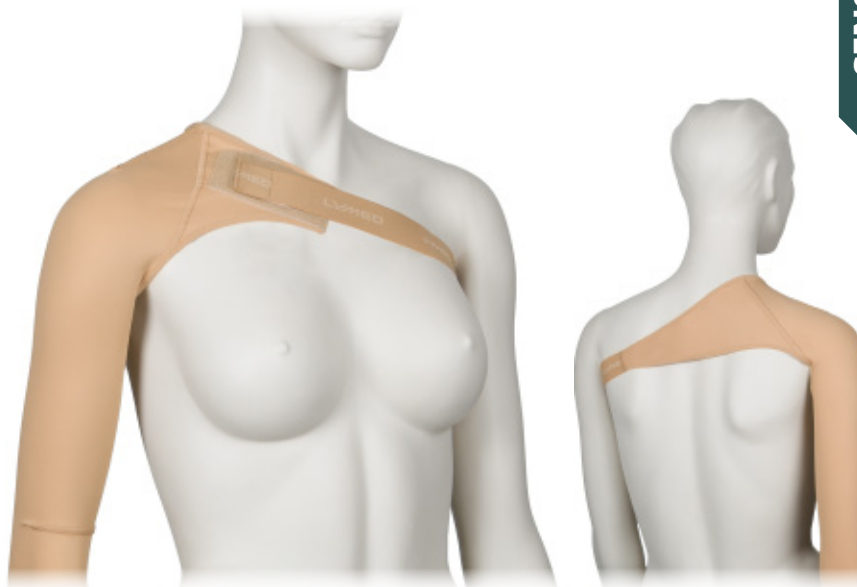
A10S2

Product information:

Elastic strap running under the axilla to hold the sleeve up. Fastening with velcro. Available for all sleeves reaching up to axilla.

Material: ELA 1

Color: Same as sleeve



SLEEVE FASTENING 3

Custom-made

Model

Product / Art.No

Model 3 - Opposite sleeve

Adults

A20S3

Children

A10S3

Product information:

Fastening model used to join two axilla length sleeves. It is suitable for situations where keeping the sleeve(s) in place is challenging. Opposite sleeve model can be adapted to various situations: one sleeve short, to keep a therapeutic sleeve in place or to connect two therapeutic sleeves.

Two sleeves need to be ordered with the fastening. If the ordered sleeves are made from different materials, fastening will be based on the product's lighter material by default.

Material: Strong / medium

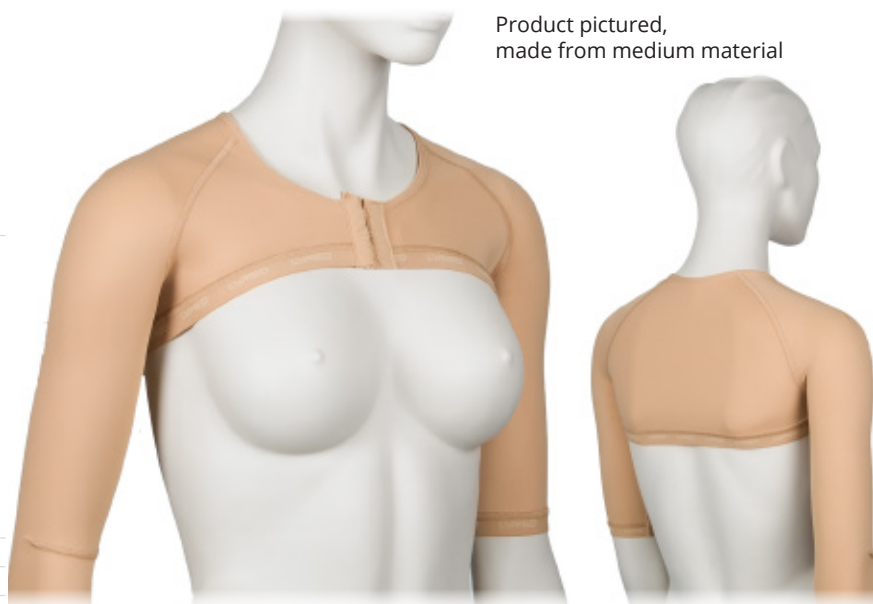
Color: Same as sleeve

Fastening: Hooks / zipper

Neckline ELA 3

Hemline SIL 2

Edge of sleeves ELA 2



Product pictured,
made from medium material

See also vest model on p. 58



Product picture, code:
SE203119F1



Product picture, code:
SE203118F1



Product picture, code:
SE203108F1

GLOVE

Custom-made

Model	Product / Art.No	
	Fingertips closed	Fingertips open
Adults	SE203119	SE203118
Children	SE103119	SE103118

GAUNTLET

Custom-made

Model	Product / Art.No	
	Thumb closed	Thumb open
Adults	SE203109	SE203108
Children	SE103109	SE103108

Instructions on forming product codes, page 26.

Product information:

Anatomical construction between the fingers and in the thumb crotch. Number of dorsal seams in glove may vary due to individual measurements and pressure/ compression levels.

Order a sleeve-glove when the length of the shaft is greater than the length of the palm.

Recommended material:	Strong, medium
Colors available:	All
Fastening:	None
By request:	Zipper
Details:	Wrist edging ELA 3

Product information:

Anatomical construction in the thumb crotch. Order a sleeve-glove when the length of the shaft is greater than the length of the palm.

Recommended material:	Strong, medium
Colors available:	All
Fastening:	None
By request:	Zipper
Details:	Wrist edging ELA 3
	Palm edging ELA 2



Product picture, code: STSE3115LF7



Product picture, code: STSE3133RF1

GLOVE WITH SPLINT POCKET

Standard size

Size	Product / Art.No	
	Right	Left
1	STSE3111R	STSE3111L
2	STSE3112R	STSE3112L
3	STSE3113R	STSE3113L
4	STSE3114R	STSE3114L
5	STSE3115R	STSE3115L
6	STSE3116R	STSE3116L
7	STSE3117R	STSE3117L
8	STSE3118R	STSE3118L
9	STSE3119R	STSE3119L
10	STSE31110R	STSE31110L

GAUNTLET WITH SPLINT POCKET

Standard size

Size	Product / Art.No	
	Right	Left
1	STSE3101R	STSE3101L
2	STSE3102R	STSE3102L
3	STSE3103R	STSE3103L
4	STSE3104R	STSE3104L
5	STSE3105R	STSE3105L
6	STSE3106R	STSE3106L
7	STSE3107R	STSE3107L
8	STSE3108R	STSE3108L
9	STSE3109R	STSE3109L
10	STSE31010R	STSE31010L

CI GLOVE

Standard size

Size	Circumf.*	Product / Art.No	
	cm	Right	Left
1	12,0 - 13,5	STSE3131R	STSE3131L
2	13,5 - 15,0	STSE3132R	STSE3132L
3	15,0 - 16,5	STSE3133R	STSE3133L
4	16,5 - 18,0	STSE3134R	STSE3134L
5	18,0 - 19,5	STSE3135R	STSE3135L

Product information:

Used in constrain-included movement therapy, for the healthy hand.

*Circumference at MCP

Material:	Strong
Color by request:	Beige
Pressure level:	No pressure
Details:	Wrist edging ELA 3

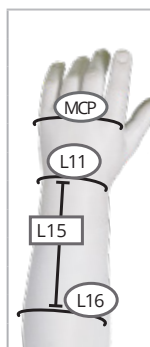
Product information:

Sense glove (pictured) and gauntlet include a zipper and a pocket for optional splint or other reinforcements. The product is used in different tonus deficiencies or hemiplegia.

Glove with open fingertips. Gauntlet with open thumb tip.

Material:	Strong
Colors by request:	All
Fastening:	Zipper
Pressure level:	14 - 20 mmHg
Details:	Wrist edging ELA 3

Sizes	Measurements (cm)			
	MCP	L11	L16	L15
1	11	10,5	14	6
2	12	11	14,5	6
3	13	11,5	15,5	8,5
4	14	12	16	8,5
5	15	12,5	16,5	9
6	16	13,5	17	9
7	17	14,5	17,5	10
8	18	16	18,5	11
9	19	16,5	20	11
10	20	17,5	23	12



Helmets and chin straps available, please see details from Lymed Skin product group p. 54-55.



INTERIM & LIGHT™

INTERIM CARE AND LIGHT PRESSURE GARMENTS



Standard size

Lymed Interim & Light garments are standard-sized products with light even pressure. Interim & Light garments are mostly used in the beginning of burn treatment when actual pressure treatment is too early to start due to open wounds or acclimatization to the pressure. Garments can reach theoretical pressure of 10-18 mmHg which is proven to be beneficial in prevention of hypertrophic scars. Pressure level can be slightly affected with the selection of size. Products are intended for short-term use prior to custom-made garments.

Lymed Interim & Light garments also provide an easy alternative to custom-made garments in pain treatment. Pressure garments acts as a stimulation treatment in pain management of e.g. CRPS patients.

To ensure product's safety, Lymed recommends to have a critical approach towards ***suitability of standard-sized products in client's treatment. According to literature, optimal benefits from pressure treatment cannot be*** achieved if the garment is too loose. On the other hand, too tight or an ill-fitting product may cause a negative effect. Lymed recommends that garments should be custom-made to sustain optimal pressure without causing tissue damage. The fit of the product should be monitored regularly.



Product picture, code: STIN224226F1H



Product picture, code: STIN214226F1H



Product picture, code: STIN104226F1H

MEN'S VEST

Standard size

Size	Circumf.*	Product / Art.No	
	cm	Short sleeves	Long sleeves
1	81 - 84	STIN224221	STIN224331
2	85 - 88	STIN224222	STIN224332
3	89 - 92	STIN224223	STIN224333
4	93 - 96	STIN224224	STIN224334
5	97 - 100	STIN224225	STIN224335
6	101 - 104	STIN224226	STIN224336
7	105 - 108	STIN224227	STIN224337
8	109 - 112	STIN224228	STIN224338
9	113 - 116	STIN224229	STIN224339
10	117 - 120	STIN2242210	STIN2243310

WOMEN'S VEST

Standard size

Size	Circumf.*	Product / Art.No	
	cm	Short sleeves	Long sleeves
1	76 - 80	STIN214221	STIN214331
2	81 - 84	STIN214222	STIN214332
3	85 - 88	STIN214223	STIN214333
4	89 - 92	STIN214224	STIN214334
5	93 - 96	STIN214225	STIN214335
6	97 - 100	STIN214226	STIN214336
7	101 - 104	STIN214227	STIN214337
8	105 - 108	STIN214228	STIN214338
9	109 - 112	STIN214229	STIN214339
10	113 - 116	STIN2142210	STIN2143310
11	117 - 119	STIN2142211	STIN2143311

CHILDREN'S VEST

Standard size

Size	Circumf.*	Product / Art.No	
	cm	Short sleeves	Long sleeves
1	43 - 45	STIN104221	STIN104331
2	46 - 49	STIN104222	STIN104332
3	50 - 54	STIN104223	STIN104333
4	55 - 59	STIN104224	STIN104334
5	60 - 63	STIN104225	STIN104335
6	64 - 67	STIN104226	STIN104336
7	68 - 71	STIN104227	STIN104337
8	72 - 75	STIN104228	STIN104338
9	76 - 79	STIN104229	STIN104339
10	80 - 83	STIN1042210	STIN1043310

Product information:

Short or long sleeved model with long hemline reaching down to the pelvis. Women's vest with anatomical breast construction.

*Circumference of chest under axillae, above breasts.

Material:	Light
Stock model:	Short sleeves
Model by request:	Long sleeves
Stock colors:	Black, beige
Fastening:	Hooks / zipper with guard
Pressure level:	10 - 18 mmHg
Details:	Neckline ELA 3, hemline SIL 1, edge of sleeve ELA 2, children's vest neckline ELA 3

FASTENING OPTIONS

Product code	
Hooks	Zipper
H	Z

LYMED INTERIM & LIGHT™

Interim care and light pressure garments

Standard size

INTERIM & LIGHT™



Product picture, code: STIN225336F1



Product picture, code: STIN215336F1



Product picture, code: STIN105336F1

MEN'S PANTS

Standard size

Size	Circumf.*	Product / Art.No	
	cm	Short legs	Long legs
1	87 - 92	STIN225221	STIN225331
2	93 - 96	STIN225222	STIN225332
3	97 - 100	STIN225223	STIN225333
4	101 - 104	STIN225224	STIN225334
5	105 - 108	STIN225225	STIN225335
6	109 - 112	STIN225226	STIN225336
7	113 - 116	STIN225227	STIN225337
8	117 - 120	STIN225228	STIN225338
9	121 - 124	STIN225229	STIN225339
10	125 - 128	STIN2252210	STIN2253310

WOMEN'S PANTS

Standard size

Size	Circumf.*	Product / Art.No	
	cm	Short legs	Long legs
1	87 - 91	STIN215221	STIN215331
2	92 - 95	STIN215222	STIN215332
3	96 - 99	STIN215223	STIN215333
4	100 - 103	STIN215224	STIN215334
5	104 - 107	STIN215225	STIN215335
6	108 - 111	STIN215226	STIN215336
7	112 - 115	STIN215227	STIN215337
8	116 - 119	STIN215228	STIN215338
9	120 - 123	STIN215229	STIN215339
10	124 - 127	STIN2152210	STIN2153310

CHILDREN'S PANTS

Standard size

Size	Circumf.*	Product / Art. No	
	cm	Short legs	Long legs
1	47 - 50	STIN105221	STIN105331
2	51 - 54	STIN105222	STIN105332
3	55 - 58	STIN105223	STIN105333
4	59 - 61	STIN105224	STIN105334
5	62 - 66	STIN105225	STIN105335
6	67 - 70	STIN105226	STIN105336
7	71 - 74	STIN105227	STIN105337
8	75 - 78	STIN105228	STIN105338
9	79 - 82	STIN105229	STIN105339
10	83 - 86	STIN1052210	STIN1053310

Product information:

Normal waist. Men's models with contouring in the front.

*Circumference at widest point of pelvis.

Material: Light

Stock colors: Black, beige

Pressure level: 10 - 18 mmHg

Details: Waist: ELA 1, Leg opening ELA 2,
Children's pants leg opening ELA3



Product picture, code:
STIN2031194RF1



Product picture, code:
STIN2031184RF1

ADULT'S GLOVE

Standard size

Size	Circumf.*	Product / Art.No			
	cm	Fingertips closed right	Fingertips closed left	Fingertips open right	Fingertips open left
1	13 - 14	STIN2031191R	STIN2031191L	STIN2031181R	STIN2031181L
2	15 - 16	STIN2031192R	STIN2031192L	STIN2031182R	STIN2031182L
3	17 - 18	STIN2031193R	STIN2031193L	STIN2031183R	STIN2031183L
4	19 - 20	STIN2031194R	STIN2031194L	STIN2031184R	STIN2031184L
5	21 - 22	STIN2031195R	STIN2031195L	STIN2031185R	STIN2031185L
6	23 - 24	STIN2031196R	STIN2031196L	STIN2031186R	STIN2031186L
7	25 - 26	STIN2031197R	STIN2031197L	STIN2031187R	STIN2031187L
8	27 - 28	STIN2031198R	STIN2031198L	STIN2031188R	STIN2031188L

CHILDREN'S GLOVE

Standard size

Size	Circumf.*	Product / Art.No	
	cm	Fingertips closed right	Fingertips closed left
1	10 - 11	STIN1031191R	STIN1031191L
2	12 - 13	STIN1031192R	STIN1031192L
	cm	Fingertips open right	Fingertips open left
1	10 - 11	STIN1031181R	STIN1031181L
2	12 - 13	STIN1031182R	STIN1031182L

Product information:

Anatomical construction between the fingers.

*Circumference at MCP.

Material:	Light
Stock colors:	Black, beige
Pressure level:	10 - 18 mmHg
Details:	Wrist edging ELA 3

Instructions on forming product codes, page 26.



ADULT'S SLEEVE		Standard size
Size	Circumf.*	Art.No
cm		
1	18 - 20	STIN20301
2	20 - 22	STIN20302
3	22 - 24	STIN20303
4	24 - 26	STIN20304
5	26 - 28	STIN20305
6	28 - 30	STIN20306
7	30 - 32	STIN20307
8	32 - 34	STIN20308
9	34 - 36	STIN20309
10	36 - 38	STIN203010
11	38 - 40	STIN203011

Product information:

Sleeve length in size 6: 43,5 cm.

**Circumference at widest point of upper arm.*

Material:	Light
Stock colors:	Black, beige
Pressure level:	10 - 18 mmHg
Details:	Upper edge SIL 2 Lower edge ELA 2

CHILDREN'S SLEEVE		Standard size
Size	Circumf.*	Art.No
cm		
1	10 - 12	STIN10301
2	12 - 14	STIN10302
3	14 - 16	STIN10303
4	16 - 18	STIN10304
5	18 - 20	STIN10305

Product information:

Sleeve length in size 3: 26,5 cm

**Circumference at widest point of upper arm.*

Material:	Light
Stock colors:	Black, beige
Pressure level:	10 - 18 mmHg
Details:	Upper edge SIL 2 Lower edge ELA 3

Product picture, code: STIN20305F1



Product picture, code: STIN20692F1



Product picture, code: STIN20682F1

ADULT'S STOCKING			Standard size
Size	Circumf.*	Shoe size	Product / Art.No
	cm	EU	Toes closed
1	28 - 32	35 - 38	STIN20691
2	33 - 37	38 - 40	STIN20692
3	38 - 42	40 - 43	STIN20693
4	43 - 46	43 - 46	STIN20694
	cm		Toes open
1	28 - 32		STIN20681
2	33 - 37		STIN20682
3	38 - 42		STIN20683
4	43 - 46		STIN20684

Product information:

*Circumference of widest point of calf.

Material:	Light
Stock colors:	Black, beige
Pressure level:	10 - 18 mmHg
Details:	Upper edge SIL 2 Edging, tip open ELA 2

CHILDREN'S STOCKING			Standard size
Size	Circumf.*	Shoe size	Product / Art.No
	cm	EU	Toes closed
1	16 - 19	23 - 26	STIN10691
2	20 - 23	26 - 31	STIN10692
3	24 - 27	31 - 36	STIN10693
	cm		Toes open
1	16 - 19		STIN10681
2	20 - 23		STIN10682
3	24 - 27		STIN10683

Instructions on forming product codes, page 26.

Product information:

*Circumference of widest point of calf.

Material:	Light
Stock colors:	Black, beige
Pressure level:	10 - 18 mmHg
Details:	Upper edge SIL 2 Edging, tip open ELA 3



Product picture, code: STIN1383F1

CHIN STRAP

Standard size

Size	Circumf.*	Art.No
cm		
1	47 - 50	STIN1381
2	51 - 53	STIN1382
3	54 - 56	STIN1383
4	57 - 59	STIN1384
5	60 - 62	STIN1385

Instructions on forming product codes, page 26.

Product information:

Velcro fastening in the back

**Circumference of the head.*

Material:	Light
Stock colors:	Black, beige
Pressure level:	10 - 18 mmHg
Fastening:	Velcro in the back
Details:	Edges: overlocking stitch



Product picture, code: STIN1393F1

HELMET

Standard size

Size	Circumf.*	Art.No
cm		
1	47 - 50	STIN1391
2	51 - 53	STIN1392
3	54 - 56	STIN1393
4	57 - 59	STIN1394
5	60 - 62	STIN1395

Instructions on forming product codes, page 26.

Product information:

Face closed.
Openings for eyes, mouth and nose are cut when fitting the product: fit the helmet on and mark the places for openings. Remove the helmet and cut with scissors. Material does not unravel when cut.

**Circumference of the head.*

Material:	Light
Stock colors:	Black, beige
Pressure level:	10 - 18 mmHg
Fastening:	Occipital hooks
Details:	Edges: overlocking stitch



POST-OPERATION™

POST-OPERATIONAL SUPPORT GARMENTS

Standard size

Lymed Post-Operation products are standard-sized products which are used in the after care of different surgeries to remove and prevent swelling, bruising and alleviate the pain in the operated area. The compression and pressure treatment supports rehabilitation by helping to regain mobility.

Multiple sources indicate that pressure treatment supports healing by removing excess fluids from the area and preventing edema after the surgery. Garments are also used to ensure the attachment of the operated tissue. Common examples of use are aftercare of liposuction and operations of face, breasts or midsection.



To ensure product's safety, Lymed recommends to have a critical approach towards suitability of standard-sized products in client's treatment.

According to literature, optimal benefits from pressure treatment cannot be achieved if the garment is too loose. On the other hand, too tight or an ill-fitting product may cause a negative effect. Lymed recommends that garments should be custom-made to sustain optimal pressure without causing tissue damage. The fit of the product should be monitored regularly.

LYMED POST-OPERATION™

Post-operational support garments

Standard size

POST-OPERATION™



Product picture, code:
STPOP21535HWF2C



Product picture, code:
STPOP21525HWF2C



Product picture, code:
STPOP21515HWF2C



Product picture, code:
STPOP21505HWF2C



Ways to wear shoulder straps

PANTS FOR WOMEN | HIGH WAIST

Standard size

Size	Circumf.*		Product / Art.No			
	Pelvis cm	Thigh cm	Ankle length	Calf length	Knee length	Short length
XS	86 - 90	50,0 - 53,0	STPOP21532HW	STPOP21522HW	STPOP21512HW	STPOP21502HW
S	91 - 95	53,5 - 56,0	STPOP21533HW	STPOP21523HW	STPOP21513HW	STPOP21503HW
M	96 - 101	56,5 - 59,5	STPOP21534HW	STPOP21524HW	STPOP21514HW	STPOP21504HW
L	102 - 110	60,0 - 62,5	STPOP21535HW	STPOP21525HW	STPOP21515HW	STPOP21505HW
XL	111 - 121	63,0 - 66,0	STPOP21536HW	STPOP21526HW	STPOP21516HW	STPOP21506HW
XXL	122 - 132	66,5 - 69,0	STPOP21537HW	STPOP21527HW	STPOP21517HW	STPOP21507HW
XXXL	133 - 138	69,5 - 71,5	STPOP21538HW	STPOP21528HW	STPOP21518HW	STPOP21508HW
XXXXL	139 - 144	72,0 - 74,5	STPOP21539HW	STPOP21529HW	STPOP21519HW	STPOP21509HW

Product information:

Women's pants for post-operational care.
Suitable also for recovery after child birth.

High waist and double fabric in midsection. Genital area open or closed.
Without choice in the order, product will be delivered with genital area closed.

Adjustable elastane shoulder straps. Non-detachable shoulder straps, clips in the front. Comes with an add-on for connecting the straps at the front. *Circumference at widest point of pelvis and upper thigh.

Material:	Medium
Stock color:	Black
Color by request:	Beige
Pressure level:	23 - 30 mmHg
Fastening:	Zipper with guard and hooks on the side of pelvis.
	Shoulder straps
Details:	Waist ELA 3
	Leg opening ELA 2

GENITAL AREA	
Product code	
Open	Closed
O	C



Product picture, code:
STPOP21535F2ZC



Product picture, code:
STPOP21525F2ZC



Product picture, code:
STPOP21515F2ZC

GENITAL AREA

Product code

Open

Closed

O

C

PANTS FOR WOMEN | NORMAL WAIST

Standard size

Size	Circumf.*		Product / Art.No		
	Pelvis cm	Thigh cm	Ankle length	Calf length	Knee length
XS	86 - 90	50,0 - 53,0	STPOP21532	STPOP21522	STPOP21512
S	91 - 95	53,5 - 56,0	STPOP21533	STPOP21523	STPOP21513
M	96 - 101	56,5 - 59,5	STPOP21534	STPOP21524	STPOP21514
L	102 - 110	60,0 - 62,5	STPOP21535	STPOP21525	STPOP21515
XL	111 - 121	63,0 - 66,0	STPOP21536	STPOP21526	STPOP21516
XXL	122 - 132	66,5 - 69,0	STPOP21537	STPOP21527	STPOP21517
XXXL	133 - 138	69,5 - 71,5	STPOP21538	STPOP21528	STPOP21518
XXXXL	139 - 144	72,0 - 74,5	STPOP21539	STPOP21529	STPOP21519

Product information:

Women's pants for post-operational care.

Normal waist. Genital area open or closed. Without choice in the order, product will be delivered with genital area closed.

*Circumference at widest point of pelvis and upper thigh.

Material:	Medium
Stock color:	Black
Color by request:	Beige
Pressure level:	23 - 30 mmHg
Fastening:	Zipper with guard and hooks on the side of pelvis.
Details:	Waist SIL 1
	Leg opening ELA 2

Instructions on forming product codes, page 26.



Product picture, code:
STPOP2244F2

VEST FOR MEN		Standard size
Size	Circumf.* cm	Art.No
XXS	80 - 84	STPOP2241
XS	85 - 90	STPOP2242
S	91 - 95	STPOP2243
M	96 - 101	STPOP2244
L	102 - 107	STPOP2245
XL	108 - 113	STPOP2246
XXL	114 - 119	STPOP2247

Product information:

Men's pressure vest for post-operational care and gynecomastia.

*Circumference of chest under axillae.

Material:	Medium
Stock color:	Black
Color by request:	Beige
Pressure level:	23 - 30 mmHg
Fastening:	Hooks at the front
Details:	Hemline SIL 1
	Neckline and armholes ELA 3

Instructions on forming product codes, page 26.



Product picture, code: STPOP2134F1

SLEEVES FOR WOMEN

Standard size

Size	Circumf. 1* cm	Circumf. 2* cm	Art.No
XS	76 - 84	24,0 - 26,0	STPOP2132
S	85 - 92	26,5 - 28,5	STPOP2133
M	93 - 100	29,0 - 31,0	STPOP2134
L	101 - 107	31,5 - 33,5	STPOP2135
XL	108 - 114	34,0 - 36,0	STPOP2136
XXL	115 - 124	36,5 - 38,5	STPOP2137

Product information:

Women's pressure sleeves for post-operational care. Anatomical elbow construction.

*Circumference 1 under axillae, above breasts.

*Circumference 2 at widest point of upper arm.

Material:	Sleeves: medium Bodice: light
Stock color:	Black
Color by request:	Beige
Pressure level:	23 - 30 mmHg in sleeves No pressure in torso
Fastening:	Hooks at the front Hemline ELA 1
Details:	Neckline ELA 3 Edge of sleeve ELA 2



Product picture, code: STPOP714F3

BRA LIGHT SUPPORT			Standard size		
Size	Circumf.*	Product / Art.No			
	cm	Two cups	Prosthesis pocket, right	Prosthesis pocket, left	Prosthesis pocket, both
XS	70 - 75	STPOP712	STPOP712PR	STPOP712PL	STPOP712PP
S	73 - 78	STPOP713	STPOP713PR	STPOP713PL	STPOP713PP
M	76 - 83	STPOP714	STPOP714PR	STPOP714PL	STPOP714PP
L	81 - 88	STPOP715	STPOP715PR	STPOP715PL	STPOP715PP
XL	86 - 93	STPOP716	STPOP716PR	STPOP716PL	STPOP716PP
XXL	91 - 98	STPOP717	STPOP717PR	STPOP717PL	STPOP717PP
Non-stock products					

Product information:

Light support bra can be used right after operations to hold the bindings in place. Soft and light material. Adjustable straps, which can be opened, enable treatment and changing of bindings without taking the bra off. Velcro fastening at the back for easier donning.

Basic model with two cups.
Available with one or two pockets for prosthesis.

**Circumference at the chest below the breasts.*

Material:	Light
Stock colors in basic models:	Black, white
Colors by request in other models:	Black, white
Pressure level:	No pressure
Fastening:	Straps, width 3 cm Velcro at the back, width 7 cm
Details:	Lower end ELA 1 Edging ELA 3



Product picture, code: STPOP724F3

BRA | MEDIUM SUPPORT

Standard size

Size	Circumf.*	Product / Art.No			
	cm	Two cups	Prosthesis pocket, right	Prosthesis pocket, left	Prosthesis pocket, both
XS	70 - 75	STPOP722	STPOP722PR	STPOP722PL	STPOP722PP
S	73 - 78	STPOP723	STPOP723PR	STPOP723PL	STPOP723PP
M	76 - 83	STPOP724	STPOP724PR	STPOP724PL	STPOP724PP
L	81 - 88	STPOP725	STPOP725PR	STPOP725PL	STPOP725PP
XL	86 - 93	STPOP726	STPOP726PR	STPOP726PL	STPOP726PP
XXL	91 - 98	STPOP727	STPOP727PR	STPOP727PL	STPOP727PP
Non-stock products					

Product information:

Medium support bra can be used right after operations to hold the bindings in place. Soft, medium material. A bit stronger than the light support bra. Adjustable straps, which can be opened, enable treatment and changing of bindings without taking the bra off. Velcro fastening at the back for easier donning.

Basic model with two cups.
Available with one or two pockets for prosthesis.

**Circumference at the chest below the breasts.*

Material:	Medium
Stock colors in basic models:	Black, white
Colors by request in other models:	Black, white
Pressure level:	No pressure
Fastening:	Straps, width 3 cm Velcro at the back, width 7 cm
Details:	Lower end ELA 1 Edging ELA 3



Product picture, code: STPOP7380DF3H

FASTENING OPTIONS

Product code

Hooks

Zipper

H

Z

BRA | SHORT STRONG SUPPORT

Standard size

Circumf.* cm	Cup size	Art.No
65 - 69	A / B / C / D / E / F / G	STPOP7365
70 - 74	A / B / C / D / E / F / G	STPOP7370
75 - 79	A / B / C / D / E / F / G	STPOP7375
80 - 84	A / B / C / D / E / F / G	STPOP7380
85 - 89	A / B / C / D / E / F / G	STPOP7385
90 - 94	A / B / C / D / E / F / G	STPOP7390
95 - 99	A / B / C / D / E / F / G	STPOP7395
100 - 104	A / B / C / D / E / F / G	STPOP73100

Product information:

Strong support bra is meant to shape and support the breasts after surgery. Can be also used to hold the bindings in place or as a breastfeeding bra.

Stock fastening: hooks at the front and supporting panel at the back. Adjustable straps can be opened.

*Circumference at the chest below the breasts.

Material:	Strong
Colors:	Black, white
Pressure level:	No pressure
Fastening:	Straps (width 3 cm), hooks / zipper fastening with guard and assistive hooks
Details:	Lower end ELA 1 Edging ELA 3

Instructions on forming product codes, page 26.



Product picture, code: STPOP7480DF3Z

FASTENING OPTIONS

Product code

Hooks	Zipper
H	Z

BRA | LONG STRONG SUPPORT

Standard size

Circumf.* cm	Cup size	Art.No
65 - 69	A / B / C / D / E / F / G	STPOP7465
70 - 74	A / B / C / D / E / F / G	STPOP7470
75 - 79	A / B / C / D / E / F / G	STPOP7475
80 - 84	A / B / C / D / E / F / G	STPOP7480
85 - 89	A / B / C / D / E / F / G	STPOP7485
90 - 94	A / B / C / D / E / F / G	STPOP7490
95 - 99	A / B / C / D / E / F / G	STPOP7495
100 - 104	A / B / C / D / E / F / G	STPOP74100

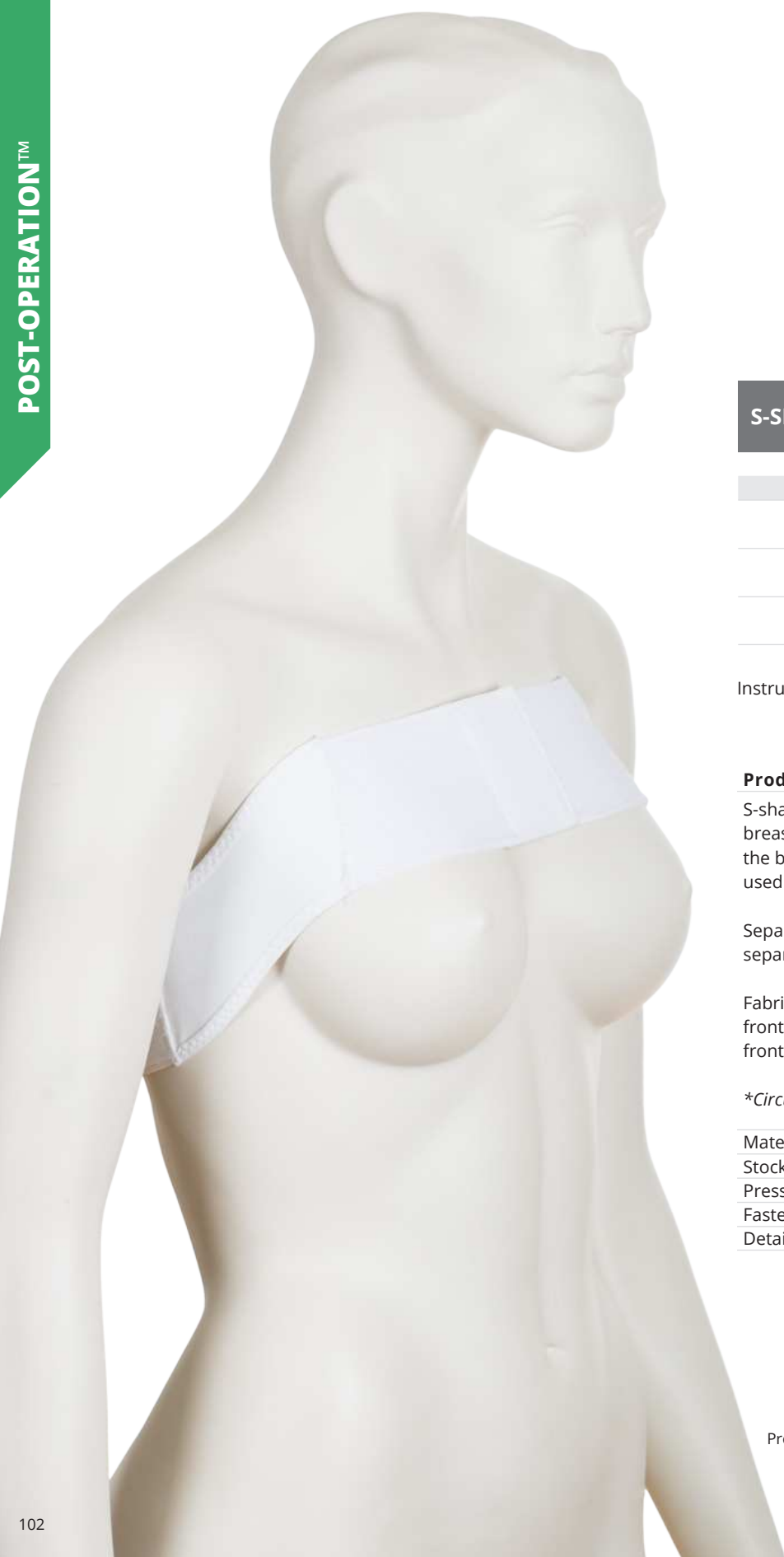
Product information:

Strong support bra is meant to shape and support the breasts after surgery. The long model is suitable especially for women with larger breasts. Can be also used to hold the bindings in place or as a breastfeeding bra.

Stock fastening: zipper with assistive hooks at the front and supporting panel at the back. Adjustable straps can be opened.

*Circumference at the chest below the breasts.

Material:	Strong
Colors:	Black, white
Pressure level:	No pressure
Fastening:	Straps (width 3 cm), zipper with guard and assistive hooks / hooks
Details:	Lower end ELA 1 Edging ELA 3



S-SHAPED BREAST WRAP

Standard size

Size	Circumf.* cm	Art.No
XS	60 - 75	STPOP752
S	70 - 90	STPOP753
M	85 - 105	STPOP754

Instructions on forming product codes, page 26.

Product information:

S-shape band to support the breasts in the aftercare of breast reconstructions. Intended to be worn on top of the bra to provide extra support after surgery. Can be used with strong support bra (see previous page).

Separate band enables the use of the products separately.

Fabric on the sides, adjustable velcro fastening at the front and back. Height of the product is 8 cm from the front.

**Circumference above the breasts.*

Material:	Strong, facial support band
Stock color:	White
Pressure level:	Adjustable
Fastening:	Velcro
Details:	Upper and lower edge ELA 3

Product picture, code: STPOP753F3



LIGHT ABDOMINAL BAND

Standard size

<i>Prod.length</i>	<i>Height</i>	<i>Art.No</i>
cm	cm	
100	18	STPOP4042100
120	18	STPOP4042120
140	18	STPOP4042140

Instructions on forming product codes, page 26.

Product information:

Fully adjustable abdominal band that can be tightened to any circumference. The abdominal band has a two-part velcro fastening that grips to the product. Material is see-through and breathable. The thin abdominal band can be worn under or on clothing. Choose band length based on circumference.

Material:	Velcro support band
Color:	Black
Pressure level:	Adjustable
Fastening:	Velcro

Product picture, code: STPOP4042100F2



Product picture, code: STPOP403180F1



Product picture, code: STPOP403380F1

STRONG ABDOMINAL BAND

Standard size

Prod.length cm	Height cm	Art.No
80	16	STPOP403180
100	16	STPOP4031100
120	16	STPOP4031120
140	16	STPOP4031140
80	26	STPOP403380
100	26	STPOP4033100
120	26	STPOP4033120
140	26	STPOP4033140

Instructions on forming product codes, page 26.

Product information:

Strong elastic support band can be used as a light back support or a light hernia belt.

Adjustable velcro fastening matching the height of the band.

Choose band length based on circumference.

Narrowest band: choose a shorter band.

Material:	Strong support band polyamide 86 %, elasthane 9 %, polypropylene 5 %
Color:	Beige
Pressure level:	Adjustable
Fastening:	Velcro

Product picture, code: STM4041110F1

MATERNITY SUPPORT BELT

Standard size

Prod.length cm	Height cm	Art.No
110	10	STM4041110

Product information:

Strong elastic band to support the growing belly.

Material:	Strong support band
Color:	Beige
Pressure level:	Adjustable
Fastening:	Velcro





Product picture, code:
STPOP1114F1

Product picture, code:
STPOP1124F1

FACIAL SUPPORT

Standard size

Size	Circumf.*	Product / Art.No	
	cm	Ear area open	Ear area closed
S	58 - 62	STPOP1113	STPOP1123
M	62 - 66	STPOP1114	STPOP1124
L	66 - 72	STPOP1115	STPOP1125
XL	72 - 76	STPOP1116	STPOP1126

Instructions on forming product codes, page 26.

Product information:

Velcro fastenings on the crown of the head and back of the neck.

*Circumference from crown to chin.

Material:	Medium
Color:	Beige
Pressure level:	Adjustable
Fastening:	Velcro
Details:	Neck strap: ELA 1
	Edging: ELA 3



Product picture, code:
STPOP115F1

STRONG CHIN STRAP

Standard size

Size	Art.No
One size	STPOP115

Instructions on forming product codes, page 26.

Product information:

Consists of several bands with adjustable velcro fastenings.

Material:	Facial support band
Stock color:	White
Color by request:	Beige
Pressure level:	Adjustable
Fastening:	Velcro

HELMET FOR HAIR TRANSPLANT OPERATIONS

Standard size

Size	Circumf.*	Art.No
cm		
S	50 - 54	STPOP1393
M	54 - 58	STPOP1394

Product information:

Can be used to stabilize hair transplants and bandages.

**Circumference of the head.*

Material:	Light
Color:	Black
Pressure level:	No pressure
Fastening:	Velcro below the chin

Instructions on forming product codes, page 26.



Product picture, code: STPOP1394F2



WELL-BEING™

PRESSURE GARMENTS FOR WELLNESS AND HEALTH



Custom-made

non-medical
device

Lymed Well-being products increase body awareness, help to reduce tension, pain and incorrect posture. The products are made for everyday use and do not restrict mobility.

Pressure garments strengthen messages transmitted by our receptors to our brains: an active information path means that muscles activate better, too, giving the body continuous information and instructions to seek itself to a more natural position, thus improving the quality of our movement. Lymed Well-being products also support metabolism and prevent fluid accumulation.

Lymed Well-being products are different from other posture products by being custom-made: that guarantees products' fit and functionality.



Product picture, code: WB21433F2

CONTROL POSTURE SHIRT

Custom-made

Model	Product / Art.No
Long sleeves	
Women	WB21433
Men	WB22433

Instructions on forming product codes, page 26.

Product information:

Adult's long-sleeved posture shirt guides the body to position itself naturally and reminds its user to seek better posture. This is achieved by muscle activation and by strengthening the body's deep sensory input. Pressure shirt is used for developing a better posture, prevention of problems and muscle activation in work, free-time and during exercise. The product activates the upper body and removes excess fluid from the body.

Combination of even pressure and light compression. The product is used as underwear. Long-sleeved shirt with anatomical elbow constructions from light material. Women's vest with anatomical breast construction.

AMC Multicolor addition is not applicable to Wellbeing products.

Material:	Medium
Colors available:	All, no seam color choices
Pressure level:	10-18 mmHg, Ccl A
Fastening:	None
Details:	Hemline SIL 1
	Neckline ELA 3
	Edge of sleeve ELA 2



SPORT™

PRESSURE GARMENTS FOR SPORT

Custom-made

non-medical
device

Lymed Sport™ products are designed for active use and they have an urban, sleek visual style. Lymed Sport products can help the athlete reap all benefits of medical pressure and compression. All products in the product group are individually manufactured.

Lymed Active™ products are made for versatile use; either during or after performance. Active products combine progressive and even pressure to maximize the effects of medical pressure on the body. Active products are diverse to wear: they increase muscle control, remove excessive fluids and prevent tissue edema.



Recovery™ pants are only designed to enhance recovery right after strenuous performance. Recovery pants have a higher medical compression than Active products, and their sole purpose is to speed up metabolism, remove fluids and prevent edema building up in the muscles. Design and material choices in Recovery products are hand-picked to rev up the recovery process, thus making the products incompatible for all-round active use.

Our specialty in Lymed Sport is to design individual product solutions to para-athletes world wide.



Product picture, code:
SPA2145333F2

ACTIVE OVERALL

Custom-made

Model	Product / Art.No	
	Long sleeves and legs	Short sleeves and legs
Women	SPA21453333	SPA21452222
Men	SPA22453333	SPA22452222
Addition*		
	Hamstring reinforcement	Thigh reinforcement
Right	SPATBR	SPATFR
Left	SPATBL	SPATFL

*Both thigh and hamstring reinforcements will not be manufactured for one product at the same time.

Product information:

Active overall for recovery after performance or to be used during performance. The product activates the whole body, removes excess fluid from the body and prevents edema. Additional hamstring or thigh reinforcements available for increased muscle activation. Overall combines two different compression classes.

Available with long sleeves and legs or with short sleeves and legs. Long-sleeved overall with anatomical elbow constructions. Long legs with anatomical construction at the knee. Women's overall with anatomical breast construction.

In addition to the base color, you can also select a second fabric color, as shown in the example model. AMC Multicolor addition is not applicable to Sport products.

Material:	Medium
Colors available:	All
Pressure level:	Combined ccl 1 and ccl 2
Fastening:	Zipper
Details:	Neckline ELA 3, edge of sleeve and leg ELA 2



Product picture, code: SPA22433F2

Product picture, code: SPA21433F2

ACTIVE VEST		Custom-made
Model	Product / Art.No	
	Long sleeves	Short sleeves
Women	SPA21433	SPA21422
Men	SPA22433	SPA22422

Instructions on forming product codes, page 26.

Product information:

Active vest for recovery after performance or to be used during performance. The product activates the upper body, removes excess fluid from the body and prevents edema.

Available with long or short sleeves. Long-sleeved shirt with anatomical elbow constructions. Women's vest with anatomical breast construction.

In addition to the base color, you can also select a second fabric color, as shown in the example model. AMC Multicolor addition is not applicable to Sport products.

Material:	Medium
Colors available:	All
Pressure level:	Ccl 1
Fastening:	None / zipper
	Neckline ELA 3
Details:	Edge of sleeve ELA 2
	Lower edge SIL 1



Product picture, code: SPA22533F2



Product picture, code: SPA21533F2

ACTIVE PANTS		Custom-made
Model	Product / Art.No	
	Long legs	Short legs
Women	SPA21533	SPA21522
Men	SPA22533	SPA22522
Addition*		
	Hamstring reinforcement	Thigh reinforcement
Right	SPATBR	SPATFR
Left	SPATBL	SPATFL

*Both thigh and hamstring reinforcements will not be manufactured for one product at the same time.

Product information:

Active pants for recovery after performance or to be used during performance. The product activates the lower body, removes excess fluid from the body and prevents edema. Additional hamstring or thigh reinforcements available for increased muscle activation.

Available with long or short legs. Anatomical construction at the knee. Men's models with contouring at the front.

In addition to the base color, you can also select a second fabric color, as shown in the example model.

AMC Multicolor addition is not applicable to Sport products.

Material:	Medium
Colors available:	All
Pressure level:	Ccl II
Fastening:	None
Details:	Integrated waistband, 6 cm wide
	Leg opening ELA 2



Product picture, code:
SPA20601F2



Product picture, code:
SPA20629F2

ACTIVE LEG

Custom-made

Model

Product / Art.No

**Ankle-knee
Fortificated achilles tendon**

Unisex

SPA20601

Product information:

Active leg for recovery after performance or to be used during performance.

Fortification on Achilles tendon (strong fabric).

AMC Multicolor addition is not applicable to Sport products.

Material:	Medium
	Fortification: strong
Colors available:	All
Pressure level:	Ccl II
Fastening:	None
Details:	Upper edge SIL 1
	Lower edge ELA 2

ACTIVE SOCK

Custom-made

Model

Product / Art.No

**Knee-high
Fortificated achilles tendon**

Unisex

SPA20629

Product information:

Active sock for recovery after performance or to be used during performance.

Achilles tendon and foot fortifications (strong fabric), anatomical ankle construction.

AMC Multicolor addition is not applicable to Sport products.

Material:	Medium
	Fortifications: strong
Colors available:	All
Pressure level:	Ccl II
Fastening:	None
Details:	Upper edge SIL 1



Product picture, code:
SPA20303F2

ACTIVE SLEEVE		Custom-made
Model	Product / Art.No	
	Wrist-elbow	Wrist-axilla
Unisex	SPA20301	SPA20303

Instructions on forming product codes, page 26.

Product information:

Active sleeve for recovery after performance or to be used during performance.

Wrist-elbow length with anatomical elbow constructions.

AMC Multicolor addition is not applicable to Sport products.

Material:	Medium
Colors available:	All
Pressure level:	Ccl II
Fastening:	None
Details:	Upper edge SIL 1 Lower edge ELA 2



Product picture, code: SPR22533F2

Product picture, code: SPR21533F2

RECOVERY PANTS

Custom-made

Model Product / Art.No

Long legs

Women SPR21533

Men SPR22533

Product information:

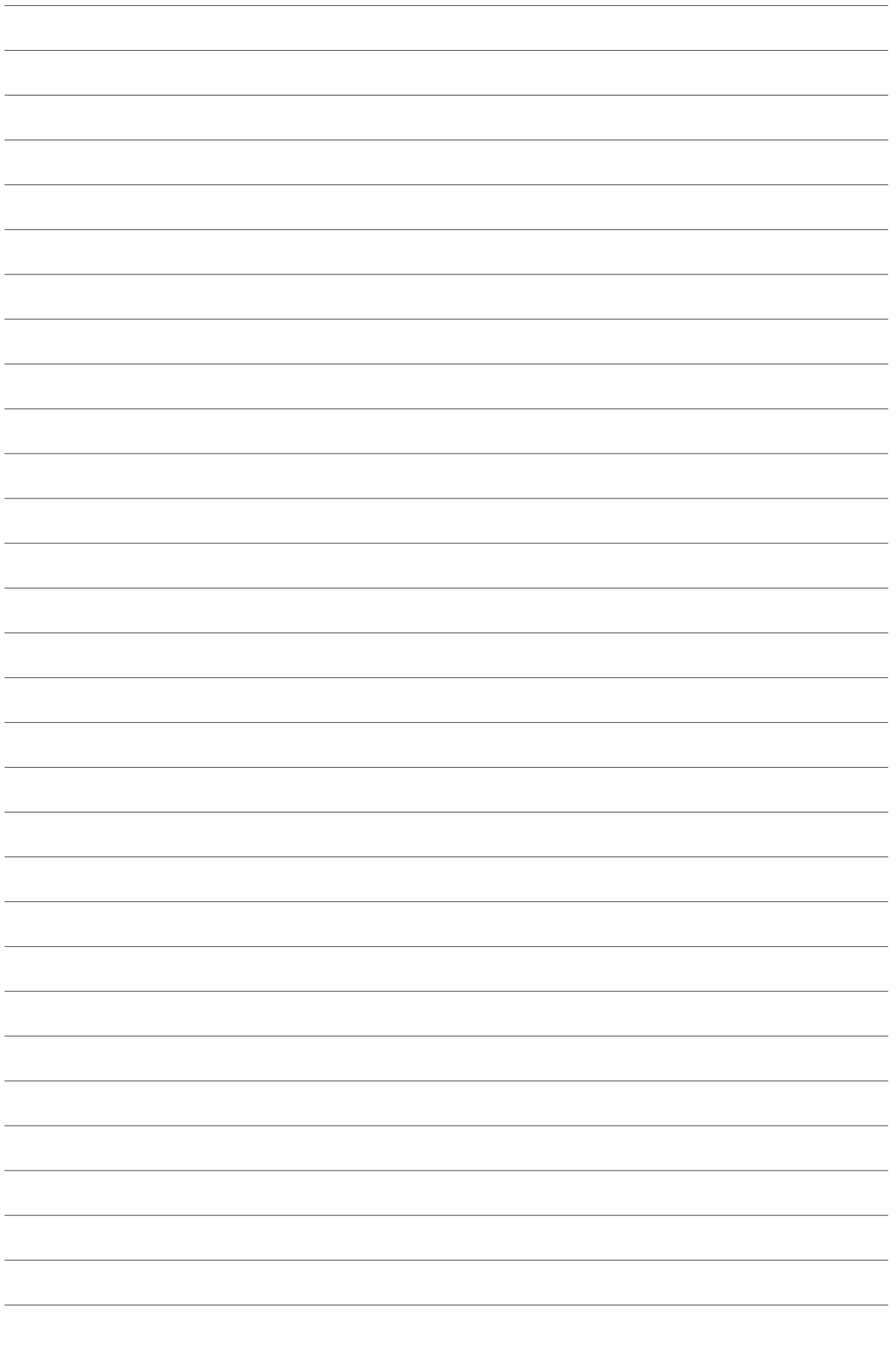
Recovery pants for maximizing recovery. Designed to be used after performance. Strong compression boosts the metabolism, removes excess fluid from the lower body and prevents edema.

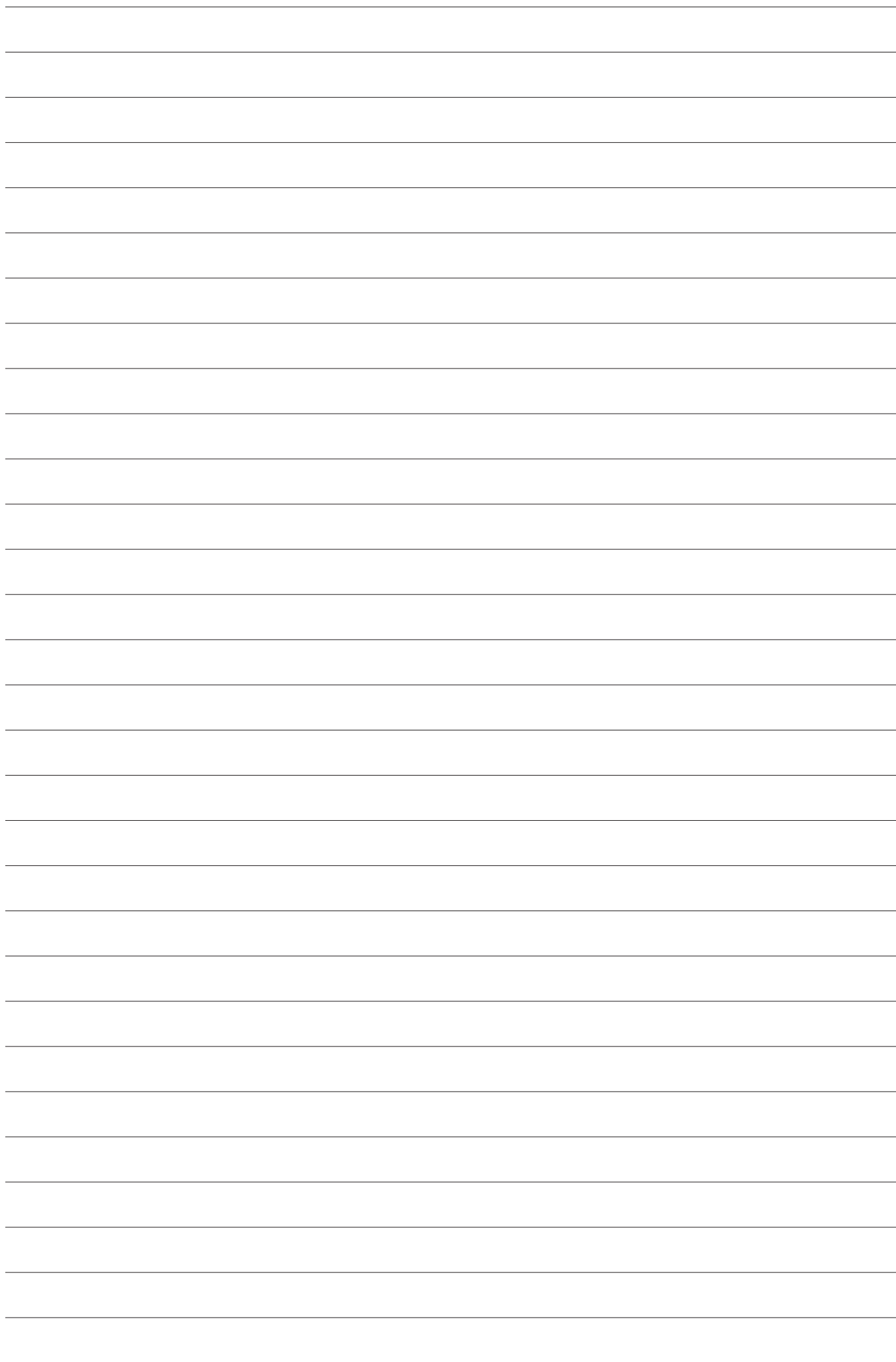
Available with long legs. Anatomical construction at the knee. Men's models with contouring at the front.

AMC Multicolor addition is not applicable to Sport products.

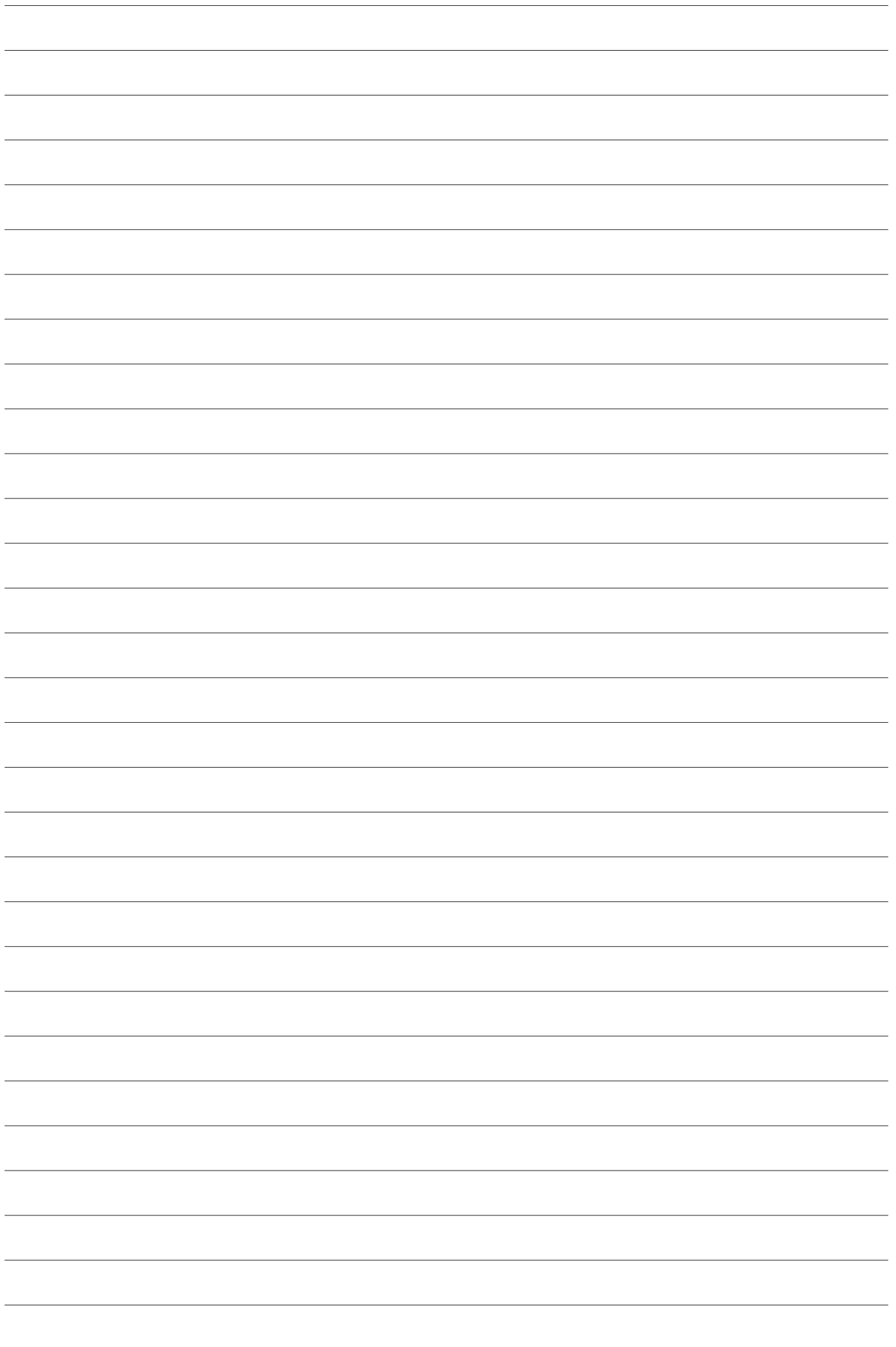
Material:	Strong
Colors available:	All, no seam color choices
Pressure level:	Ccl II+
Fastening:	None
Details:	Integrated waistband, 6 cm wide Leg opening ELA 2

Instructions on forming product codes, page 26.











Skin™

Compression™

Sense™

Interim & Light™

Post-operation™

Well-being™

Sport™

LYMED®

Manufacturer:
Lymed Oy
Pyhäjärvenkatu 5 A , 33200 Tampere
Finland
Tel. +358 20 779 2233
info@lymed.fi

Distributors worldwide: www.lymed.fi